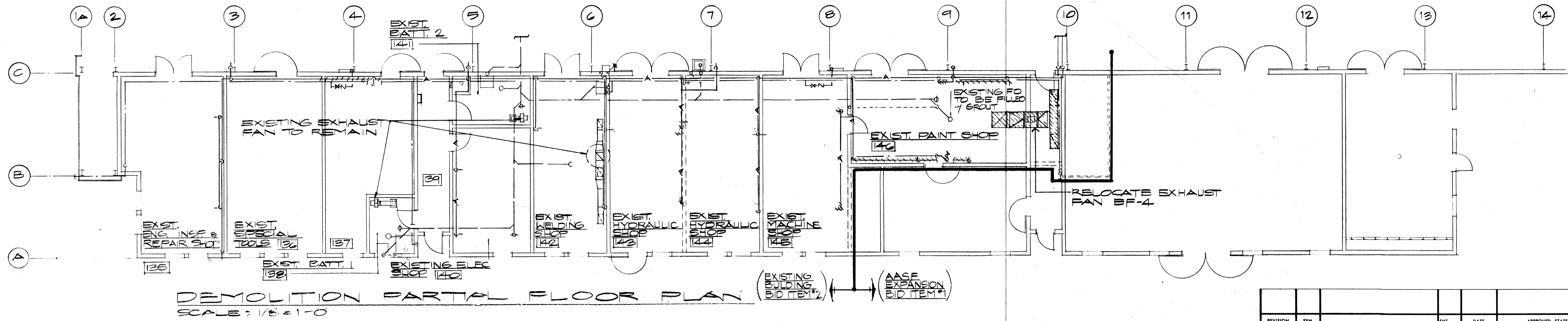


DEMOLITION PARTIAL FLOOR PLAN  
SCALE: 1/8" = 1'-0"



DEMOLITION PARTIAL FLOOR PLAN  
SCALE: 1/8" = 1'-0"

**DEMOLITION NOTES:**

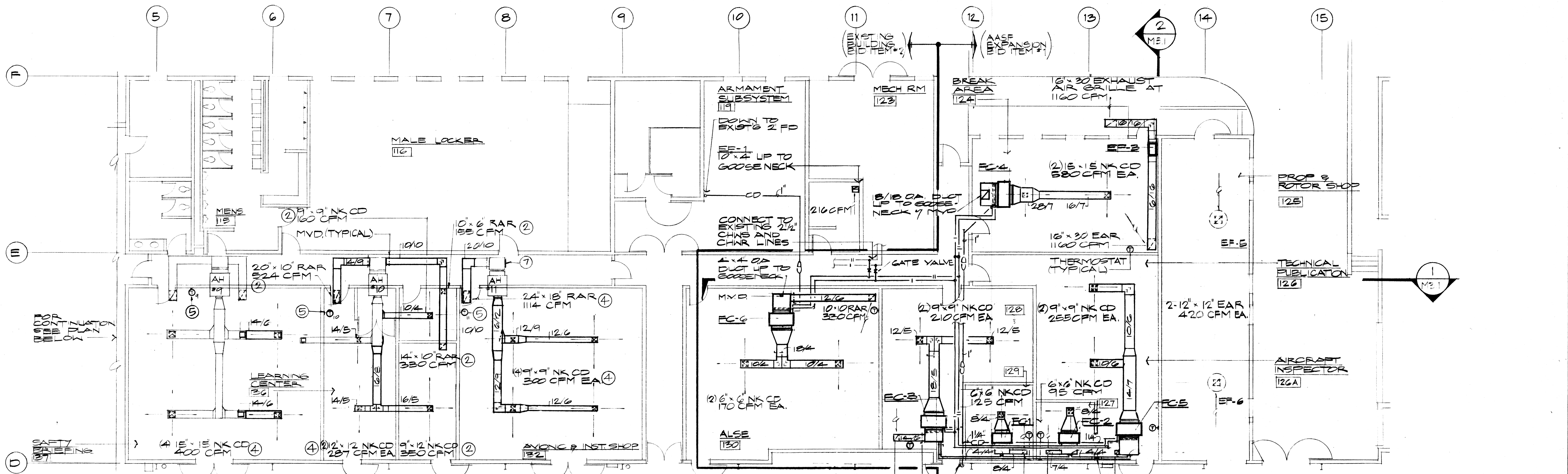
- ① CUT & CAP EXISTING DUCT
- ② BLANK-OFF EXISTING OPENING.
- ③ MODIFY EXISTING OPENING TO FIT NEW CONNECTION (SEE PARTIAL FLOOR PLAN SHOWING NEW WORK).
- ④ REMOVE EXISTING DUCT END PIECE. (SEE PARTIAL FLOOR PLAN SHOWING NEW WORK)
- ⑤ CUT AN OPENING ON EXISTING PLENUM OR DUCT TO FIT NEW DUCT CONNECTION.

- [Solid line] INDICATES EXISTING DUCTS OR EQUIPMENT TO REMAIN.
- [Hatched line] INDICATES EXISTING DUCTS OR EQUIPMENT TO BE REMOVED OR RELOCATED
- [Dashed line] INDICATES EXISTING COLD WATER PIPES TO REMAIN
- [Line with 'A'] INDICATES EXISTING COMPRESSED AIR PIPES TO REMAIN
- [Line with 'S'] INDICATES EXISTING SANITARY PIPES TO REMAIN
- [Line with 'W'] INDICATES EXISTING COLD WATER PIPES AND OUTLET TO BE REMOVED
- [Line with 'CA'] INDICATES EXISTING COMPRESSED AIR PIPES AND OUTLET TO BE REMOVED
- [Line with 'S'] INDICATES EXISTING SANITARY PIPES AND INLET TO BE REMOVED

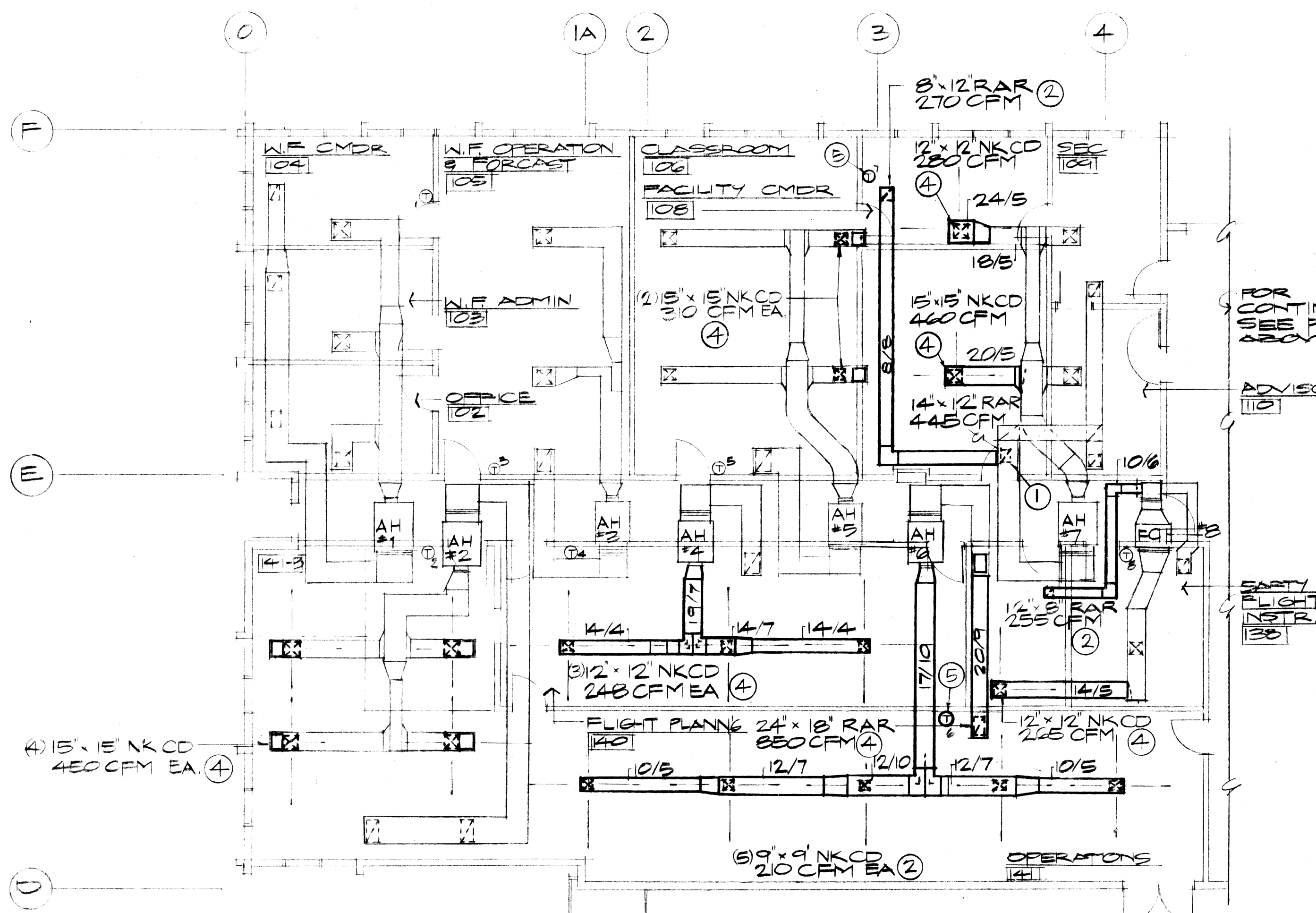
REVISION NO.	SYM.	DESCRIPTION	SHT. OF	DATE	APPROVED: STATE PUBLIC WORKS ENGINEER
DEPT. OF ACCOUNTING & GENERAL SERVICES DIVISION OF PUBLIC WORKS STATE OF HAWAII					
<b>ARMY AVIATION SUPPORT FACILITY EXPANSION</b> <b>WHEELER AFB</b> <b>DEMOLITION PLANS</b>					
DESIGNED BY: WILSON OKAMOTO & ASSOC.		DAGS JOB NO. 02-14-2640		DRAWING NO. M.I.	
DRAWN BY: CA		APPROVED BY: GC		DATE: 6-25-84	
SCALE: 1/8" = 1'-0"		SHEET 52		OF 72 SHTS	

[Professional Engineer Seal: GIOVANNI K. L. GARDNER, REGISTERED PROFESSIONAL ENGINEER, No. 2385-M, HAWAII, U.S.A.]  
 [Handwritten Signature: Wilson Okamoto]  
 [Handwritten Date: April 13, 1984]

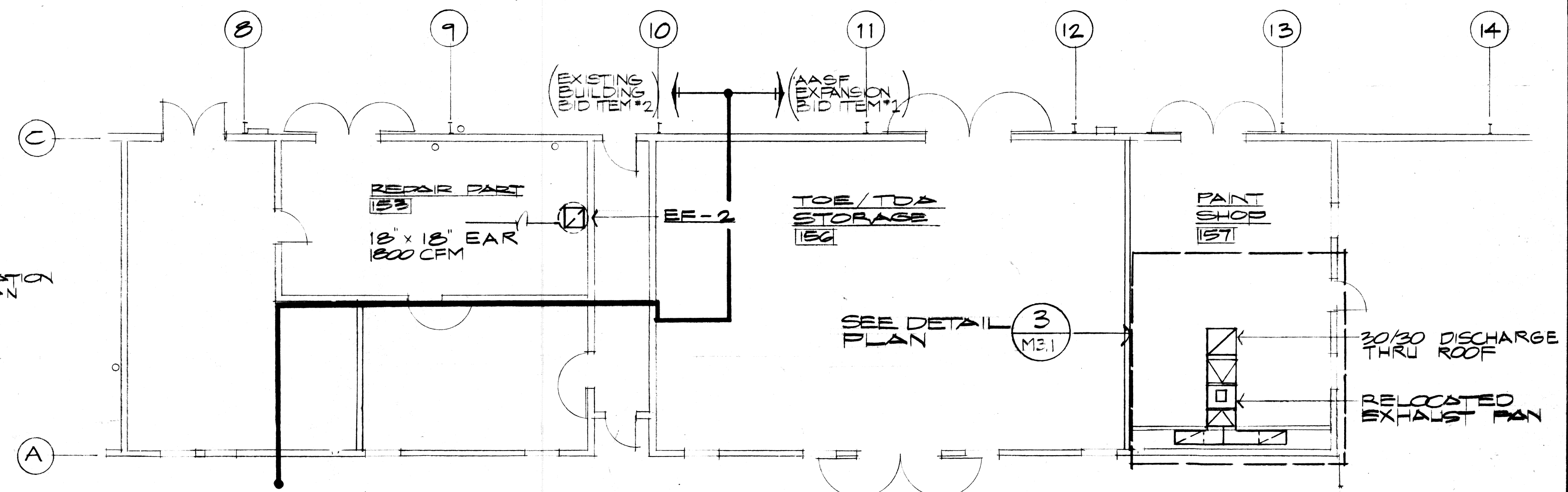




**PARTIAL FLOOR PLAN**  
SCALE: 1/8" = 1'-0"



**PARTIAL FLOOR PLAN**  
SCALE: 1/8" = 1'-0"

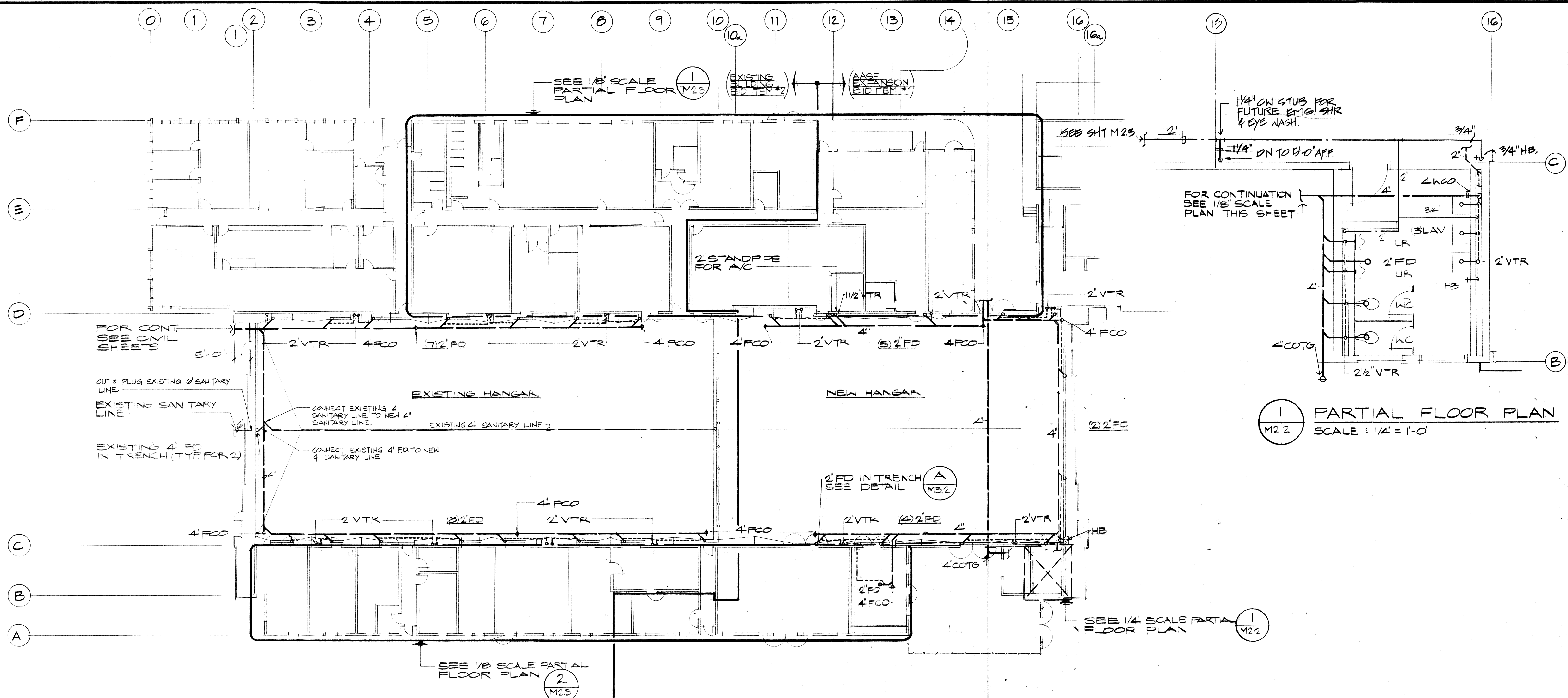


**PARTIAL FLOOR PLAN**  
SCALE: 1/8" = 1'-0"

- MODIFICATION NOTES:**
- ① REPLACE EXISTING & NEW (SEE DEMOLITION PLAN FOR EXIST'S)
  - ② NEW CELLS DIFFUSER OR RETURN AIR REGISTER
  - ③ NOTE \*3 OMITTED
  - ④ RELOCATED CELLS DIFFUSER OR RETURN AIR REGISTER
  - ⑤ RELOCATED THERMOSTAT, REWIRED TO AHU
- INDICATES EXISTING DUCTS OR EQUIPMENT TO REMAIN  
 INDICATES NEW DUCTWORK OR EQUIPMENT (DUCT SIZES SHOWN ARE NET SIZES & DOES NOT INCLUDE THE 1" DUCT LINER)  
 ⑥ EXISTING O.A. DUCT & CHILLED WATER PIPING TO REMAIN

REVISION NO.	SYMBOL	DESCRIPTION	SHT. OF	DATE	APPROVED STATE PUBLIC WORKS ENGINEER
DEPT. OF ACCOUNTING & GENERAL SERVICES DIVISION OF PUBLIC WORKS STATE OF HAWAII					
<b>ARMY AVIATION SUPPORT FACILITY EXPANSION</b> WHEELER AFB					
<b>VENTILATION - PARTIAL FLOOR PLAN ALLIED SHOPS</b>					
DESIGNED BY: C.A. DRAWN BY: C.A.		CHECKED BY: M.M. APPROVED BY: G.C.		DASH JOB NO.: DATE: 02-14-2000	
DATE: APR 13, 1984		SCALE: 1/8" = 1'-0"		DRAWING NO.: M201 SHEET: 53 OF: 72 SHETS	





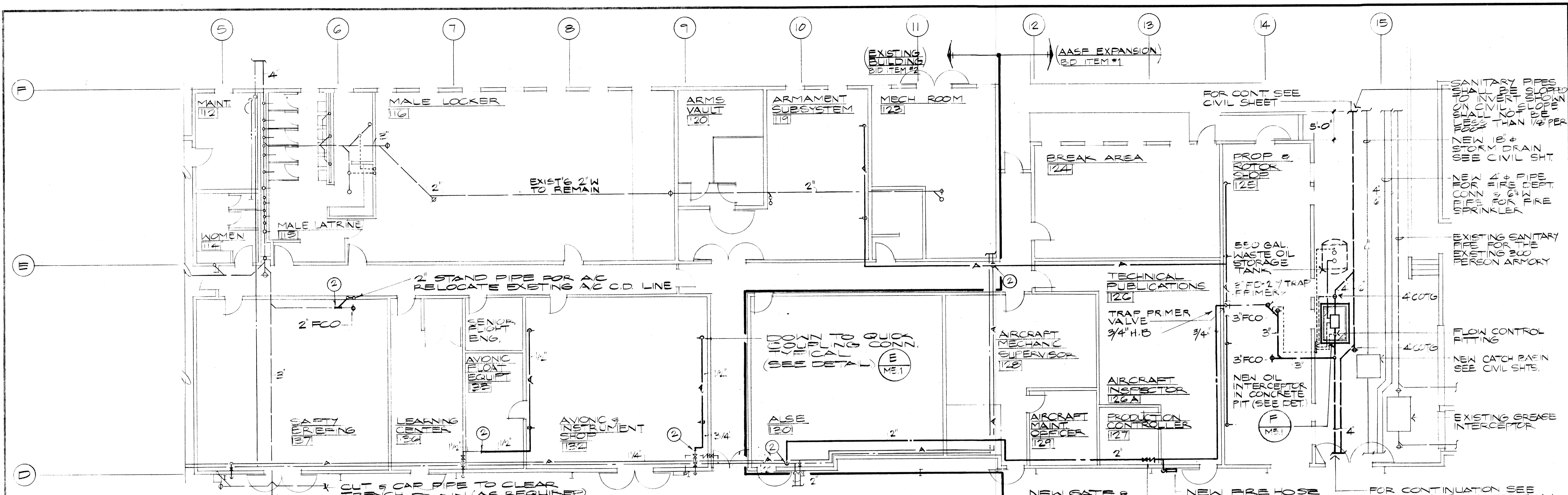
1 PARTIAL FLOOR PLAN  
SCALE: 1/4" = 1'-0"

FLOOR PLAN  
SCALE: 1/16" = 1'-0"

NOTE: FOR SANITARY & WATER DIAGRAMS FOR PLUMBING LAYOUTS ON THIS SHEET SEE SHEET M4.1

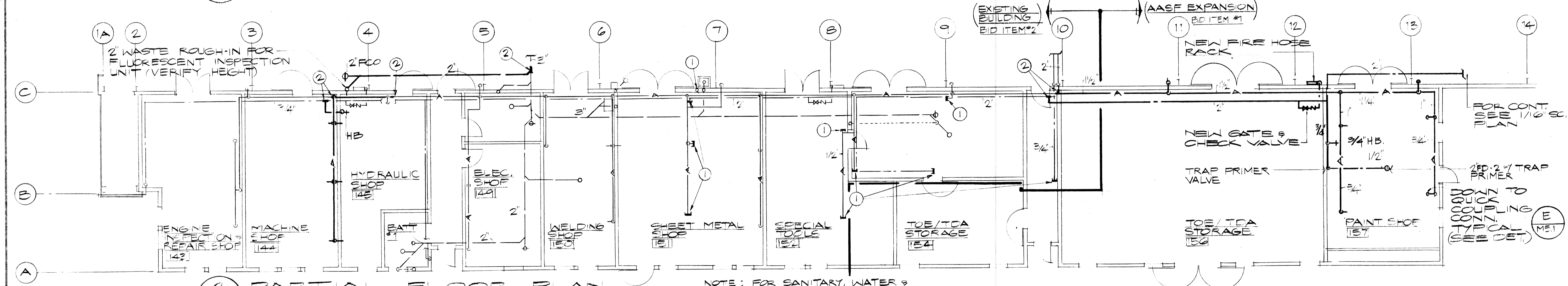
REVISION NO.	SYM.	DESCRIPTION	SHT. OF	DATE	APPROVED: STATE PUBLIC WORKS ENGINEER
DEPT. OF ACCOUNTING & GENERAL SERVICES DIVISION OF PUBLIC WORKS STATE OF HAWAII					
<b>ARMY AVIATION SUPPORT FACILITY EXPANSION</b> <b>WHEELER AFB</b> <b>PLUMBING PLANS</b>					
DESIGNED BY: <i>MM</i> DRAWN BY: <i>CS</i> DATE: 13 April 1984		CHECKED BY: <i>MM</i> APPROVED BY: <i>EC</i> SCALE: AS NOTED		DAGS JOB NO.: 02-14-2640 DATE: 6-25-84 DRAWING NO.: M2.2 SHEET: 54 OF 72 SHTS	





**1 PARTIAL FLOOR PLAN**  
SCALE: 1/8" = 1'-0"

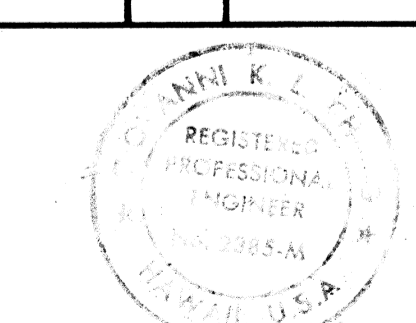
NOTE: FOR SANITARY, WATER & COMPRESSED AIR DIAGRAM SEE SHEET M4.2



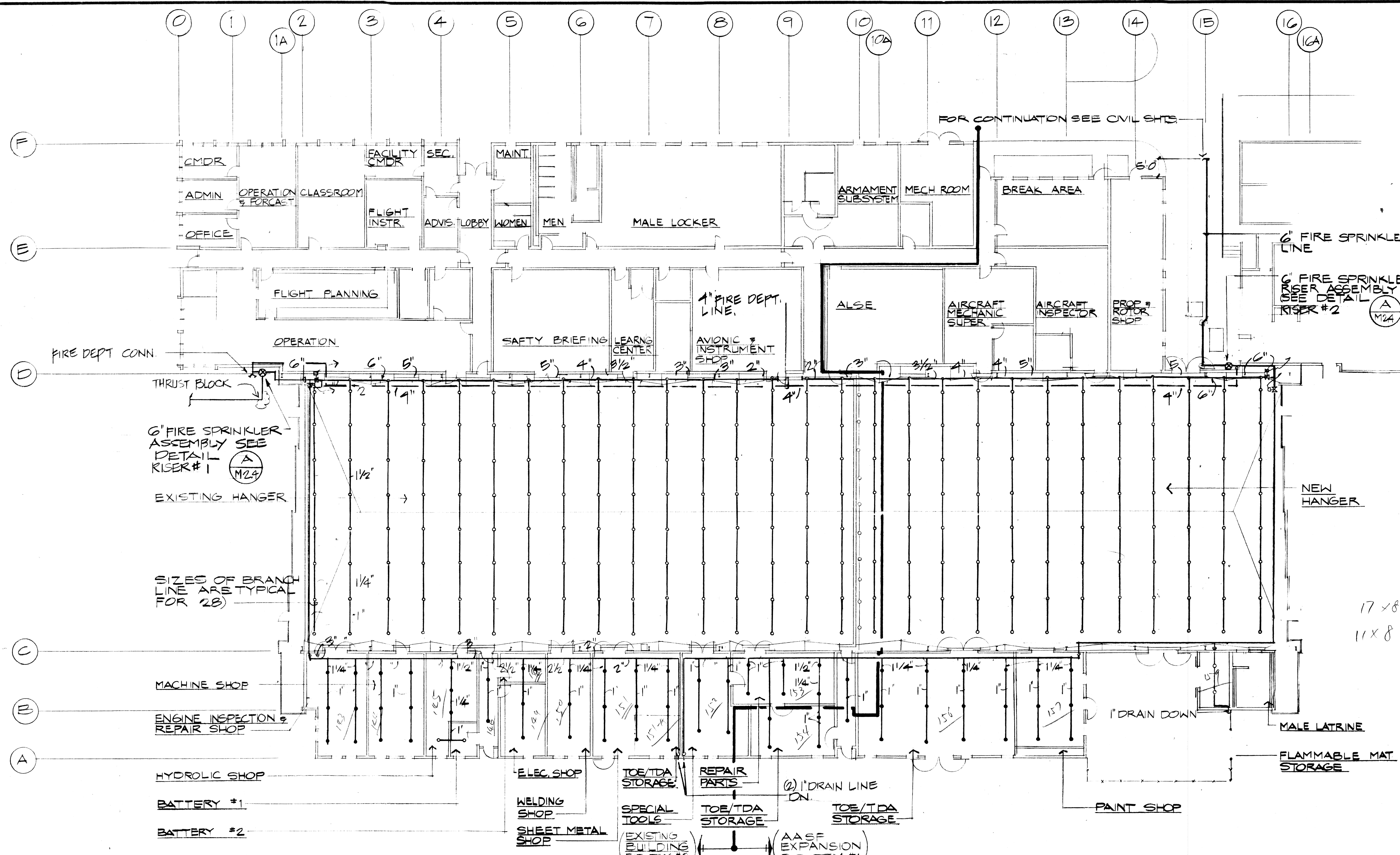
**2 PARTIAL FLOOR PLAN**  
SCALE: 1/8" = 1'-0"

NOTE: FOR SANITARY, WATER & COMPRESSED AIR DIAGRAMS SEE SHEET M4.2

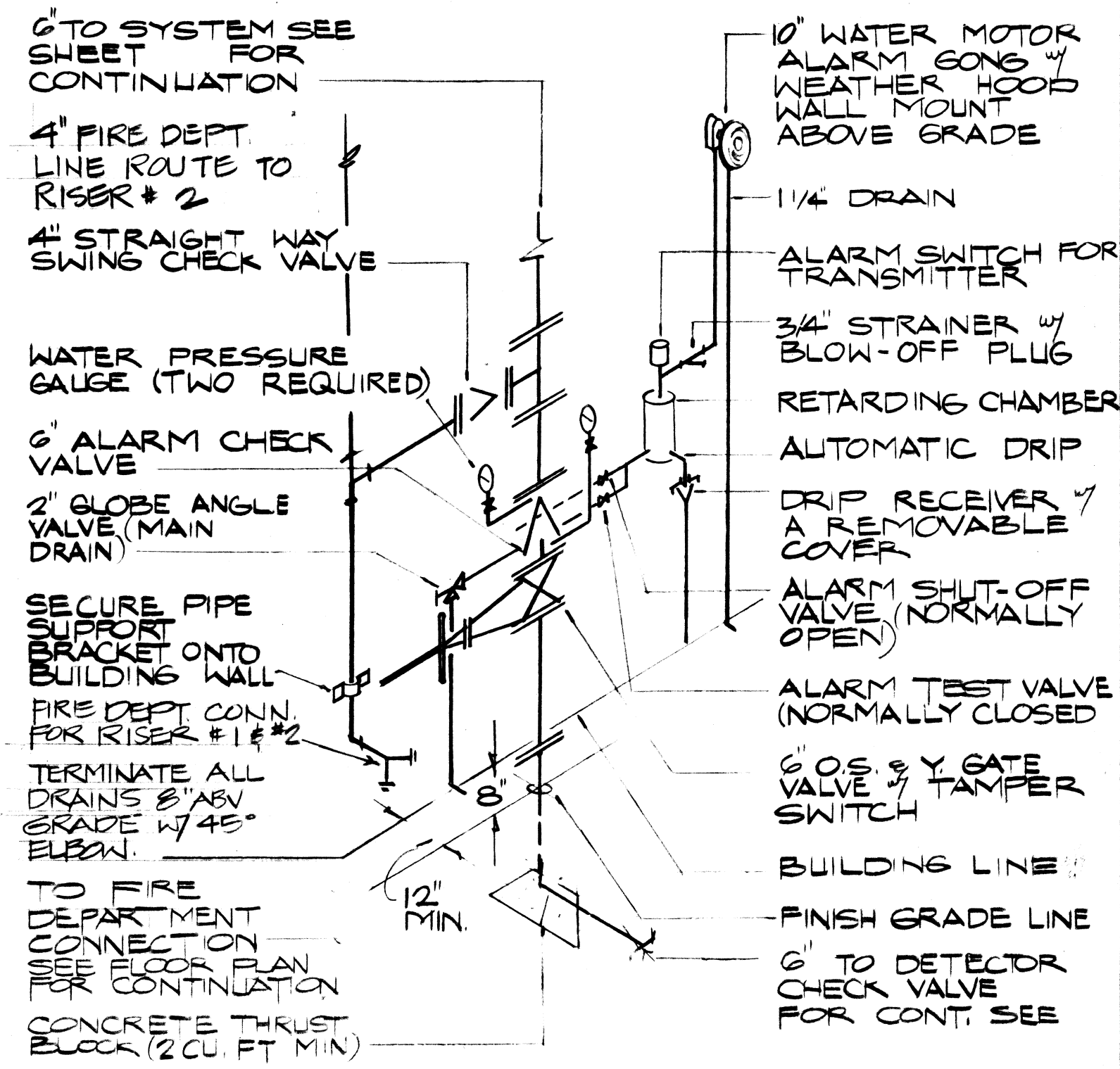
- MODIFICATION NOTES:**
- ① CUT AND CAP EXISTING COMPRESSED AIR, WATER OR SANITARY PIPES AT FLOOR, CEILING OR WALL.
  - ② CONNECT NEW COMPRESSED AIR, WATER, OR SANITARY PIPE TO EXISTING
  - — — — — INDICATES EXISTING COLD WATER LINE TO REMAIN.
  - - - - - INDICATES EXISTING SANITARY LINE TO REMAIN.
  - - - - - INDICATES EXISTING COMPRESSED AIR LINE TO REMAIN.
  - — — — — INDICATES NEW COLD WATER LINE.
  - - - - - INDICATES NEW SANITARY LINE.
  - — — — — INDICATES NEW COMPRESSED AIR LINE.

REVISION NO.	SYM.	DESCRIPTION	SHT. OF	DATE	APPROVED STATE PUBLIC WORKS ENGINEER
DEPT. OF ACCOUNTING & GENERAL SERVICES DIVISION OF PUBLIC WORKS STATE OF HAWAII <b>ARMY AVIATION SUPPORT FACILITY EXPANSION</b> <b>WHEELER AFB</b> <b>PARTIAL FLOOR PLANS</b>					
		DESIGNED BY: WILSON OKAMOTO & ASSOC. CHECKED BY: M.M.		DASS JOB NO. 02-14-7640 DRAWING NO. M2.3	
DRAWN BY: CA APPROVED BY: GC		DATE: 6.25.84 SCALE: 1/8" = 1'-0"		SHEET 55 OF 72 SHTS	





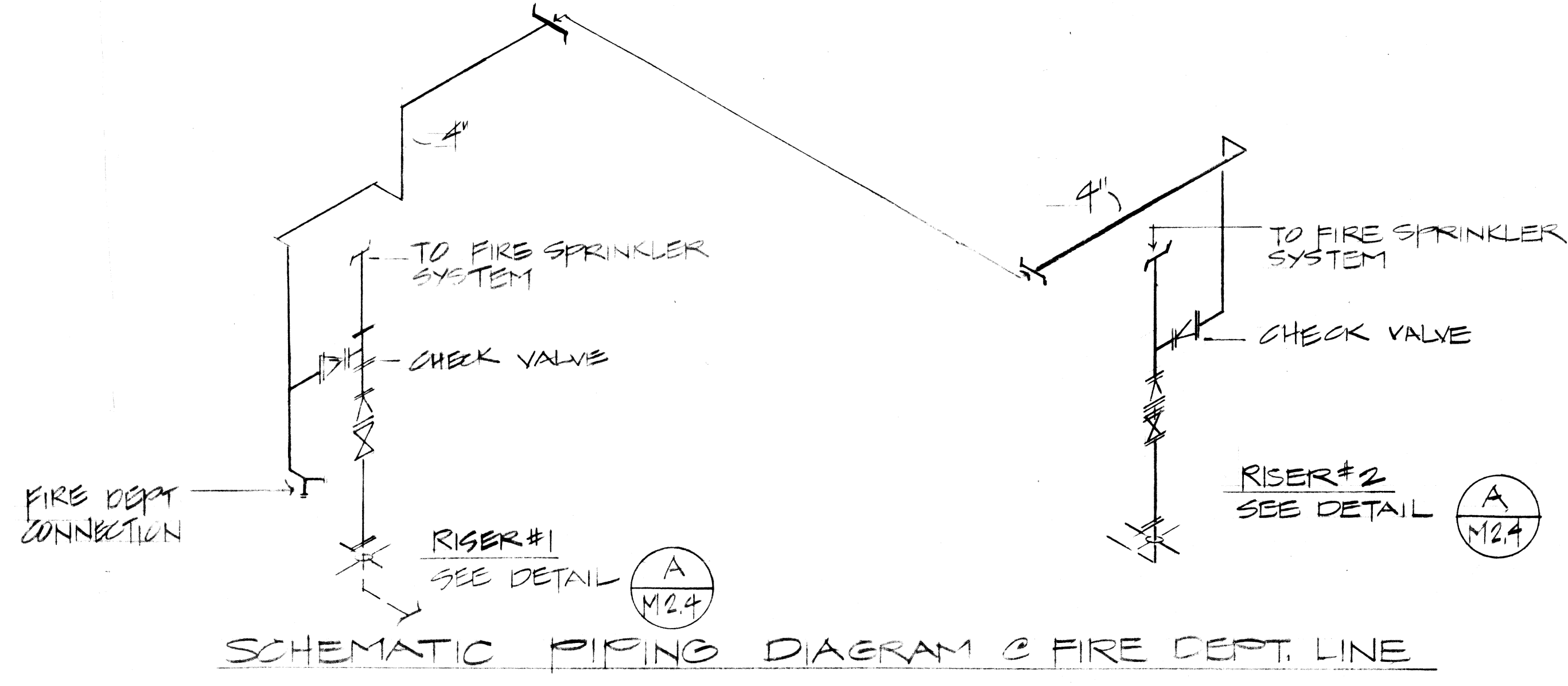
**FLOOR PLAN - FIRE SPRINKLER SYSTEM**  
SCALE: 1/16" = 1'-0"



**(A) FIRE SPRINKLER RISER VALVE ASSEMBLY DIAGRAM**  
NOT TO SCALE

- LEGEND:**
- INDICATES "UP RIGHT" TYPE FIRE SPRINKLER HEAD (UL APPROVED)
  - INDICATES "PENCIL" TYPE FIRE SPRINKLER HEAD
  - FLOW SWITCH WIRED TO ANNUNCIATOR PANEL & FIRE ALARM SYSTEM

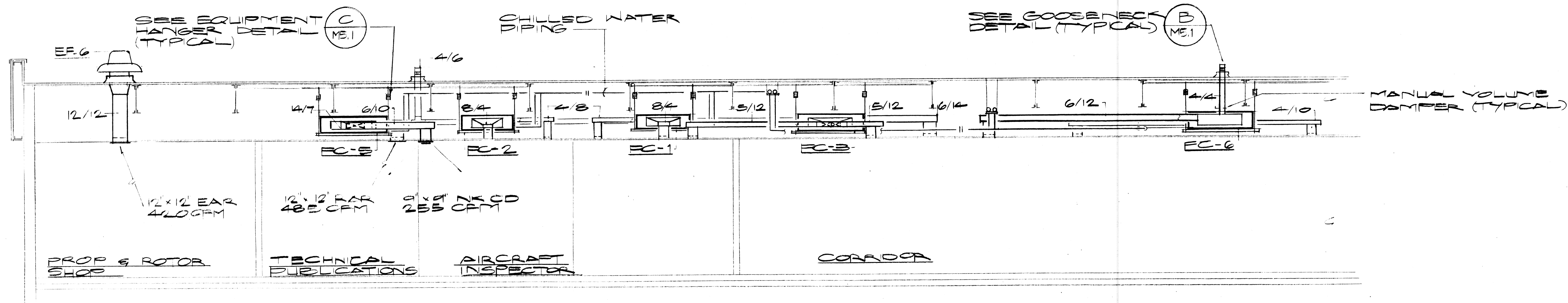
**DESIGN DATA**  
CLASSIFICATION = TYPE II AIRCRAFT HANGAR  
DESIGN SQUARE FOOTAGE = 5000 SQ. FT.  
DESIGN DISCHARGE RATE = .17 GAL./SQ. FT.



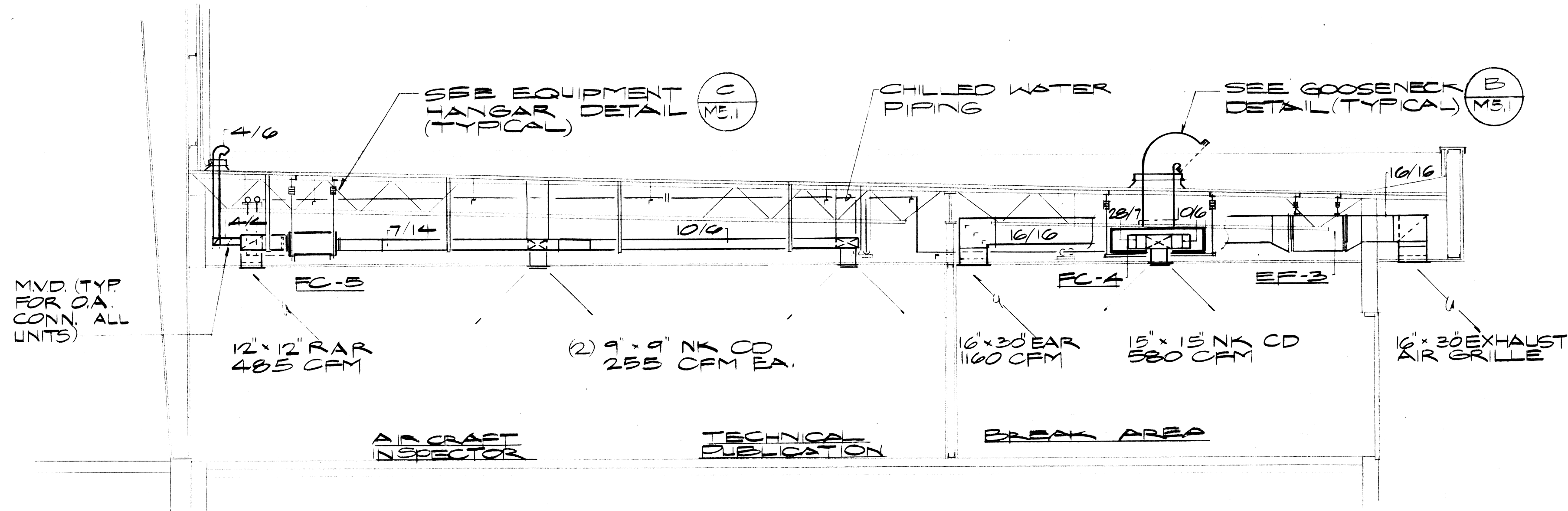
**SCHEMATIC PIPING DIAGRAM @ FIRE DEPT. LINE**

REVISION NO.	SYM.	DESCRIPTION	SHT. OF	DATE	APPROVED: STATE PUBLIC WORKS ENGINEER
DEPT. OF ACCOUNTING & GENERAL SERVICES DIVISION OF PUBLIC WORKS STATE OF HAWAII <b>ARMY AVIATION SUPPORT FACILITY EXPANSION</b> <b>WEBBER AFB</b> <b>FIRE SPRINKLER - FLOOR PLAN</b>					
THIS WORK WAS PREPARED BY ME OR UNDER MY SUPERVISION. By: <i>[Signature]</i> Its: <i>[Signature]</i> Date: <i>April 13, 1964</i>		DESIGNED BY: <i>MIM</i> CHECKED BY: <i>MIM</i> DRAWN BY: <i>CA</i> APPROVED BY: <i>GC</i>		DGS JOB NO.: <i>02-14-2640</i> DATE: <i>6-25-64</i> SCALE: AS NOTED	
WILSON OKAMOTO & ASSOC. DRAWING NO.: <i>M2.4</i> SHEET <i>50</i> OF <i>72</i> SHTS					

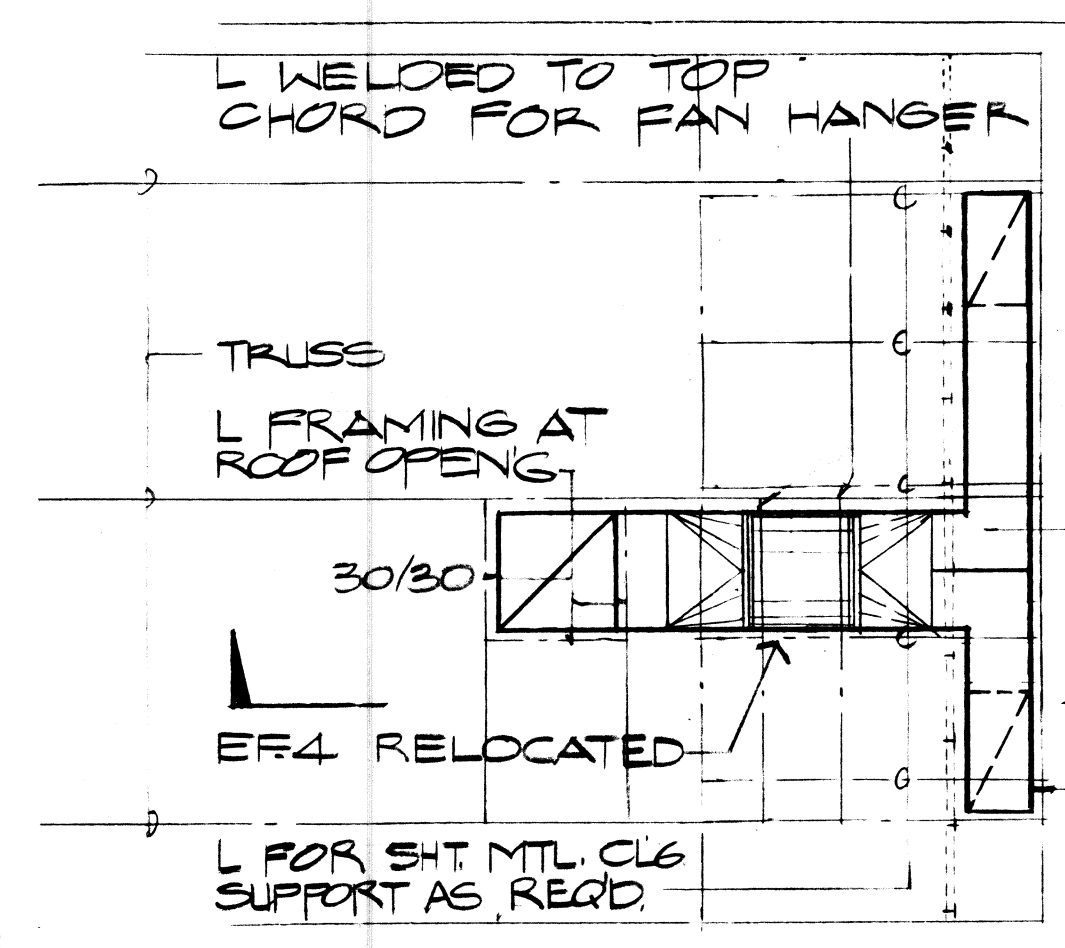




1 SECTION  
SCALE: 1/4" = 1'-0"

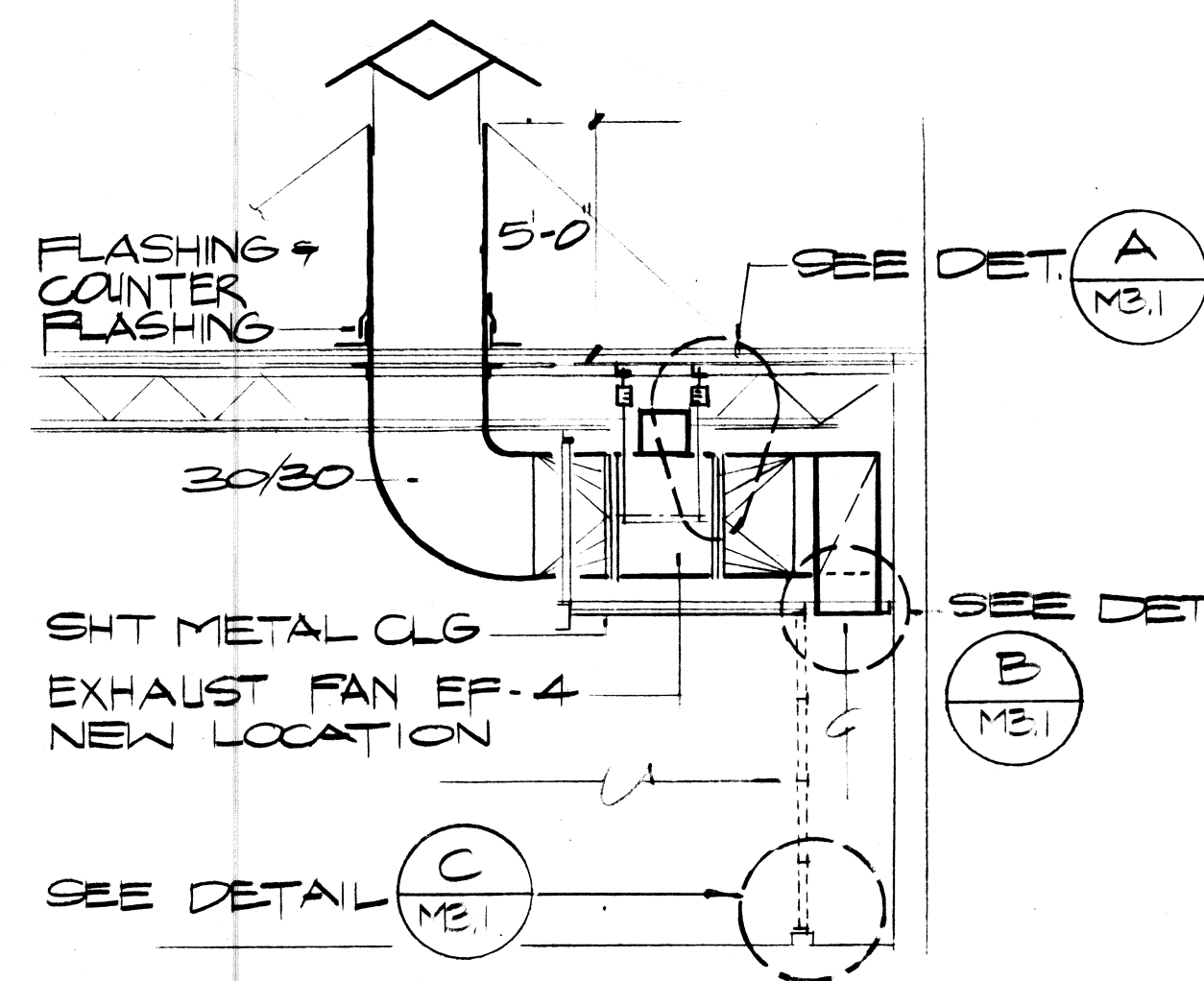


2 SECTION  
SCALE: 1/4" = 1'-0"

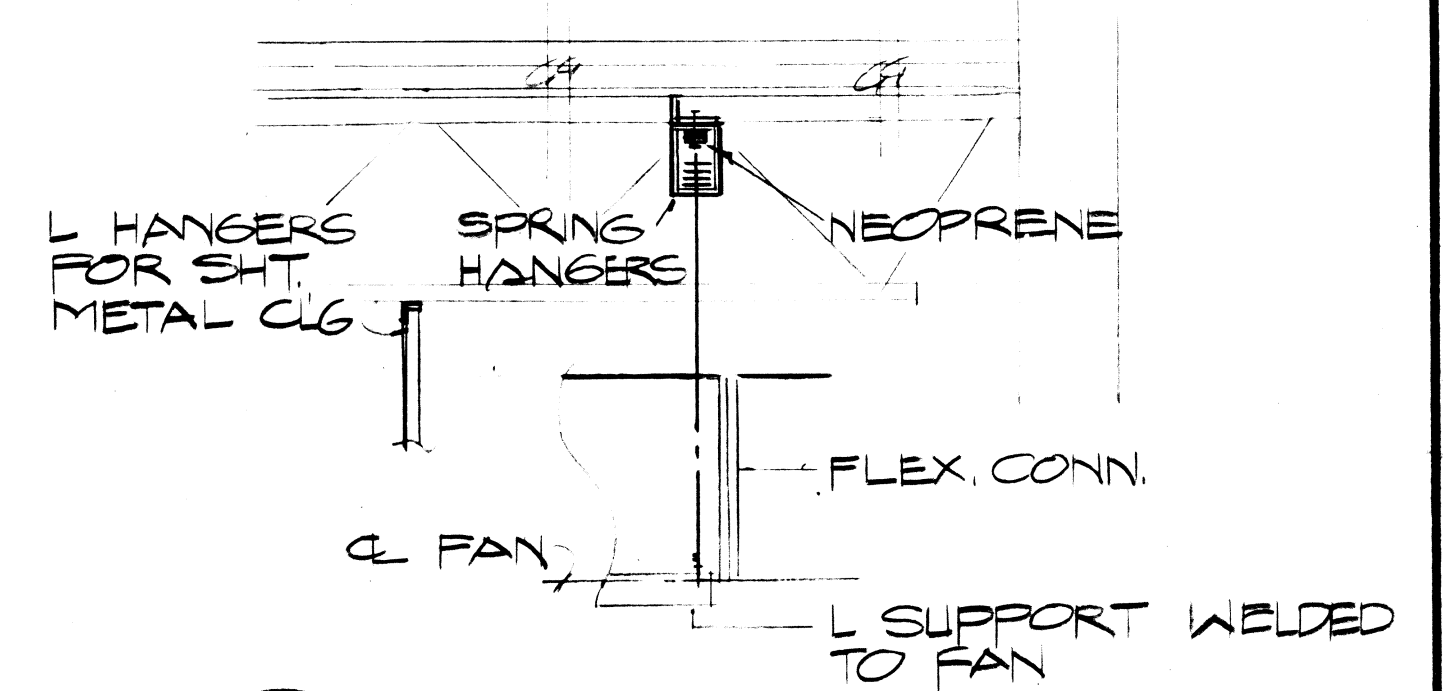


3 PLAN - SPRAY BOOTH  
SCALE: 1/4" = 1'-0"

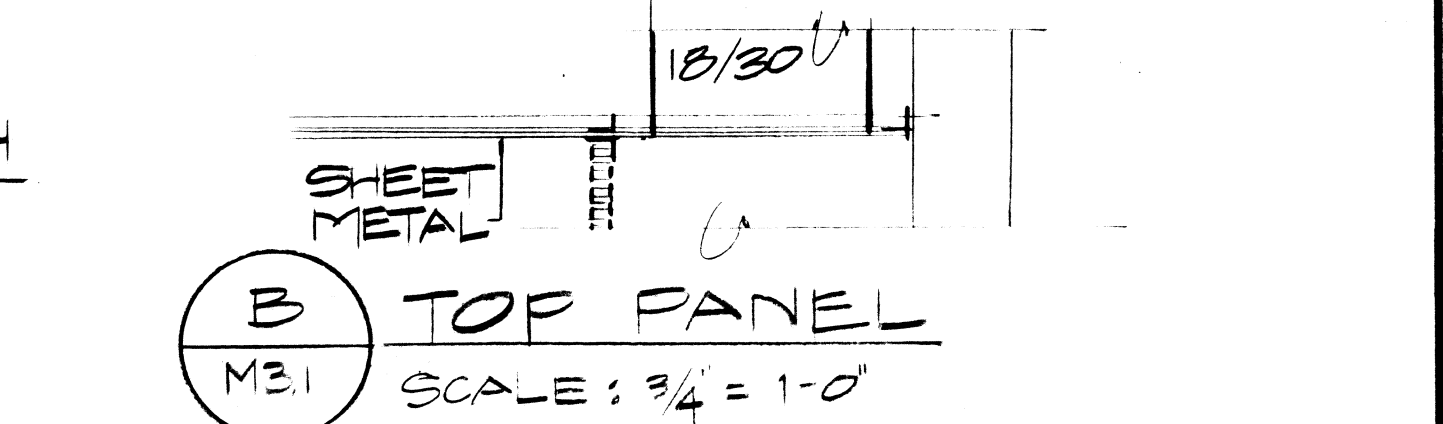
NOTE: ALL MATERIAL & EQUIPMENT WILL BE NEW EXCEPT EXHAUST FAN EF-4



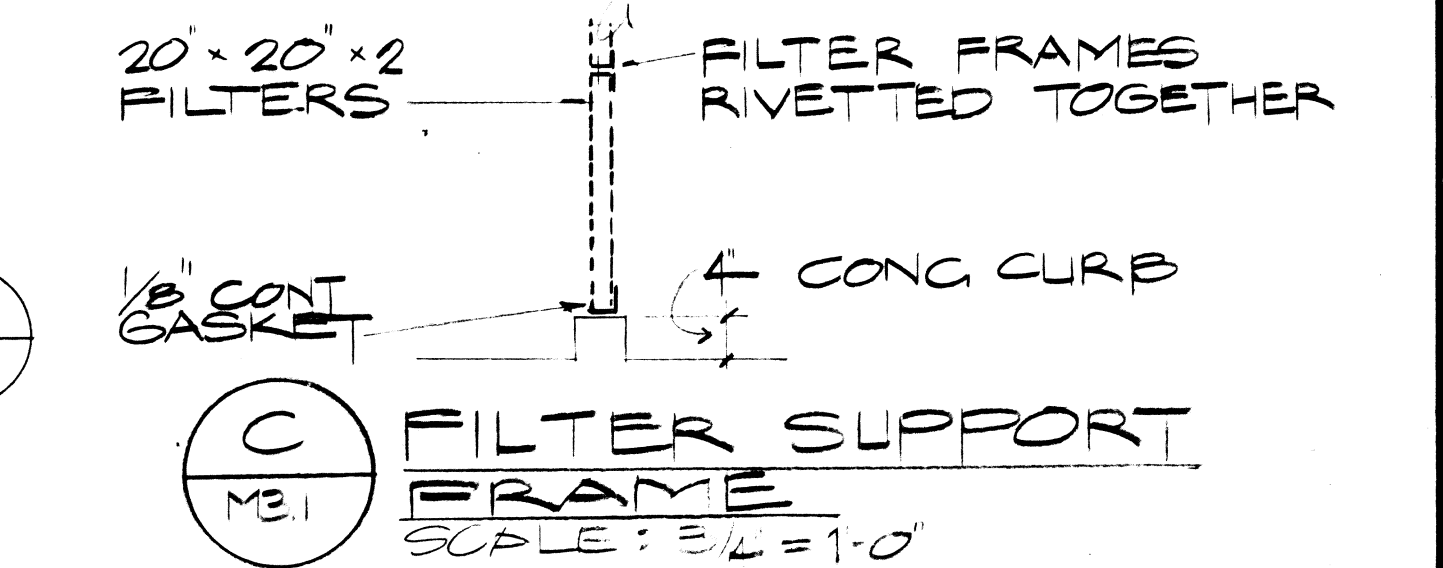
4 SECTION  
SCALE: 1/4" = 1'-0"



A FAN HANGER DETAIL  
SCALE: 3/4" = 1'-0"



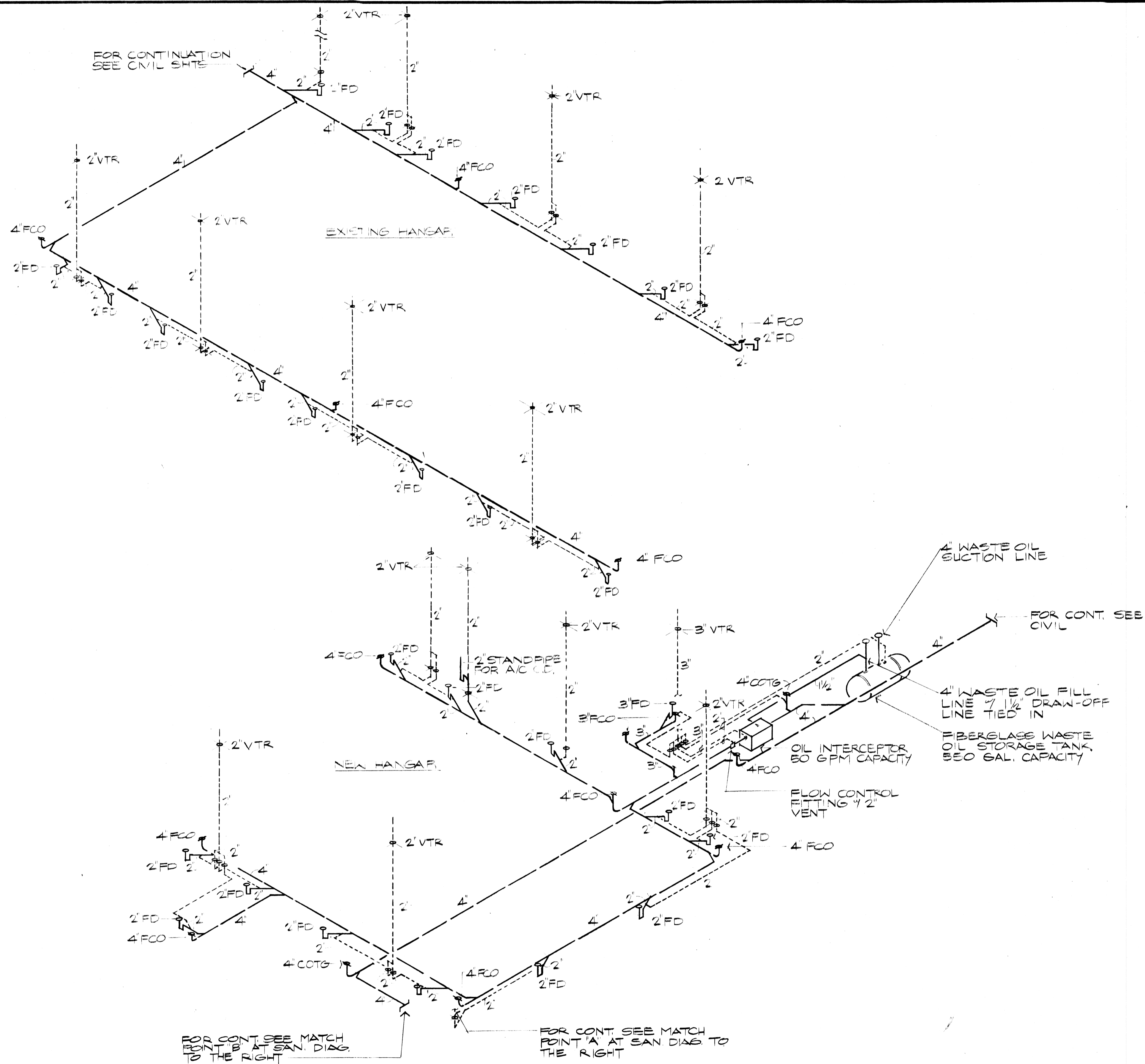
B TOP PANEL  
SCALE: 3/4" = 1'-0"



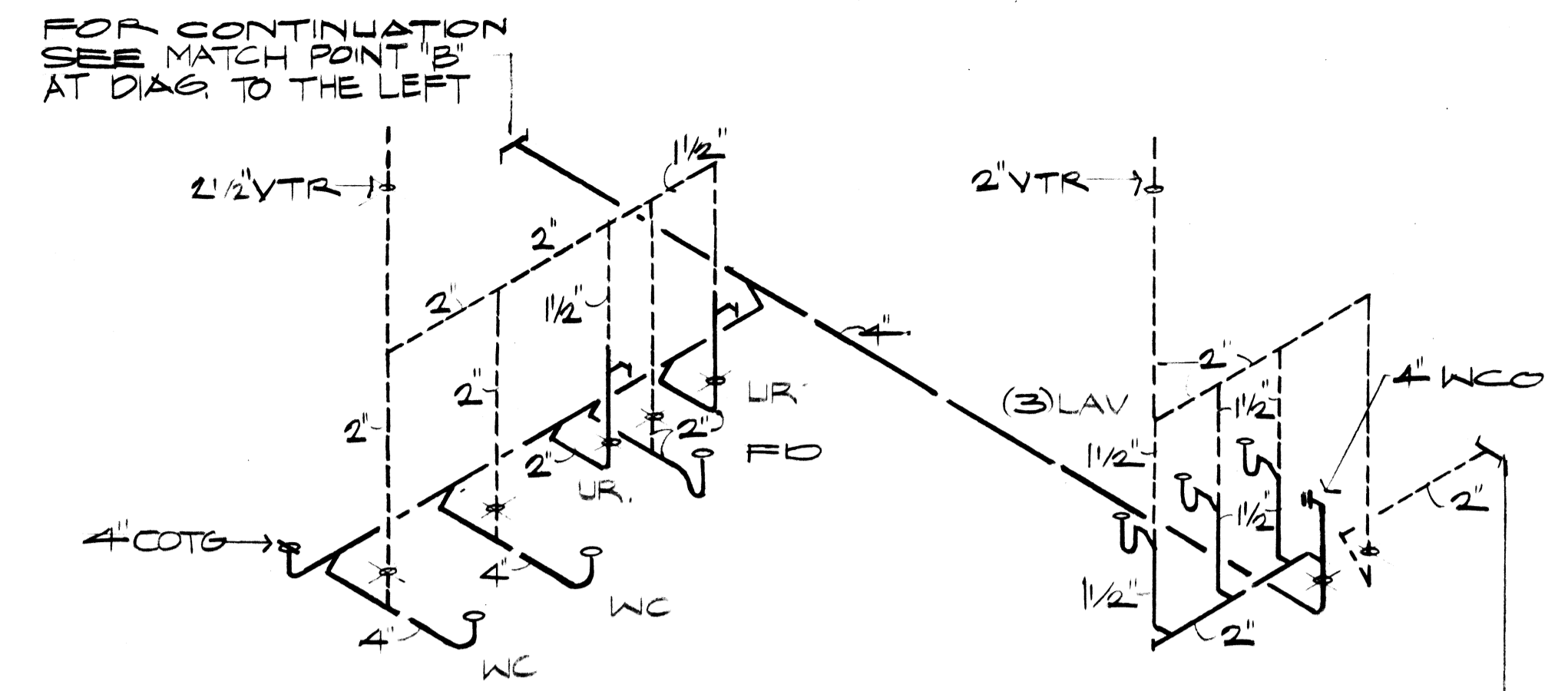
C FILTER SUPPORT FRAME  
SCALE: 3/4" = 1'-0"

REVISION NO.	SYM.	DESCRIPTION	SHT. OF.	DATE	APPROVED STATE PUBLIC WORKS ENGINEER
DEPT. OF ACCOUNTING & GENERAL SERVICES DIVISION OF PUBLIC WORKS STATE OF HAWAII <b>ARMY AVIATION SUPPORT FACILITY EXPANSION</b> WHEELER AFB. PLANS - SECTIONS & DETAILS					
DESIGNED BY: WILSON OKAMOTO 9/25/83		CHECKED BY: M.M.		DAGS JOB NO. 02-14-2640	DRAWING NO. M3.1
DRAWN BY: CA		APPROVED BY: GC		DATE: 6-25-84	SHEET 57
SCALE: AS NOTED				6-25-84	OF 72 SHTS

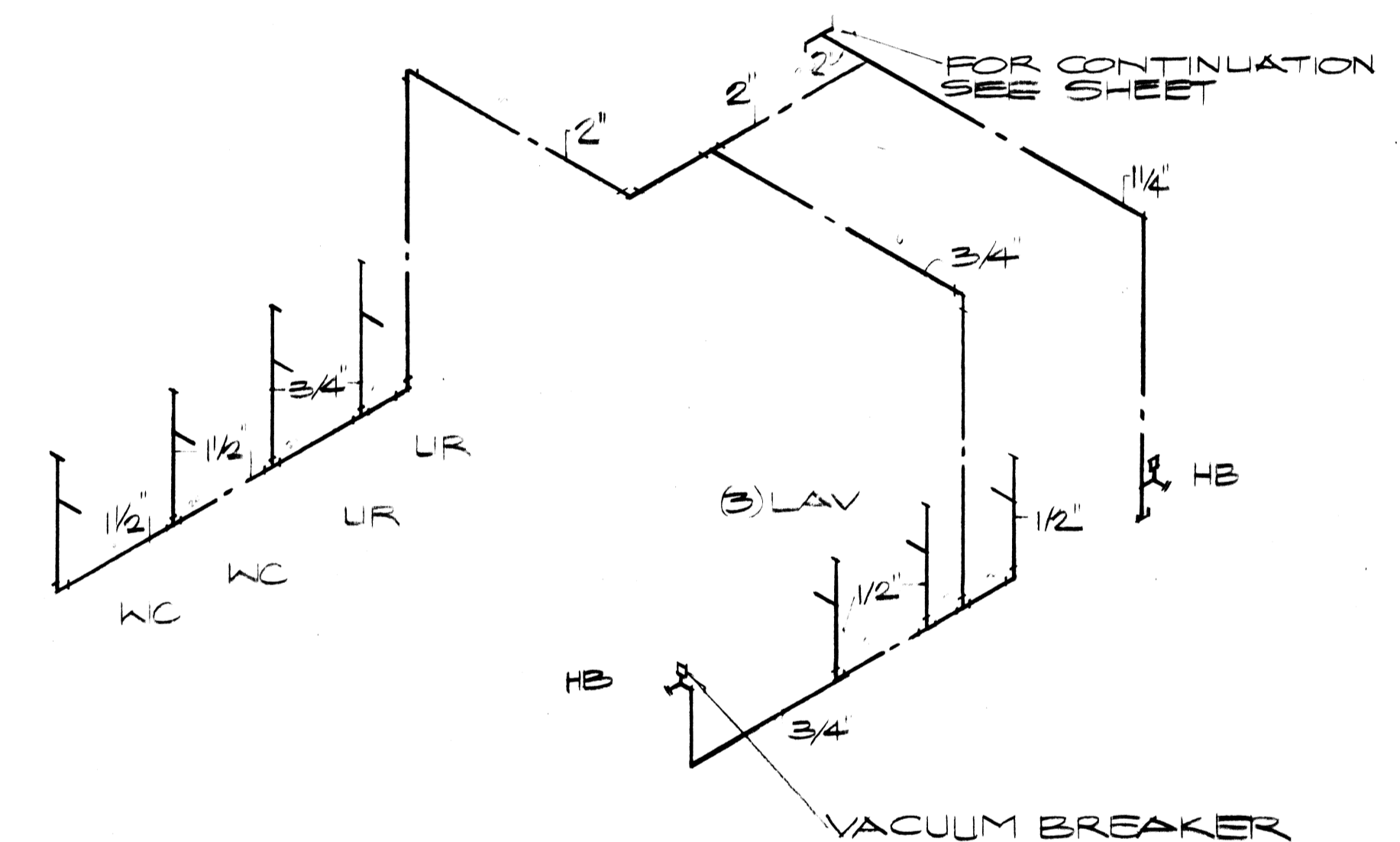




**SANITARY DIAGRAM**  
NOT TO SCALE



**SANITARY DIAGRAM**  
NOT TO SCALE



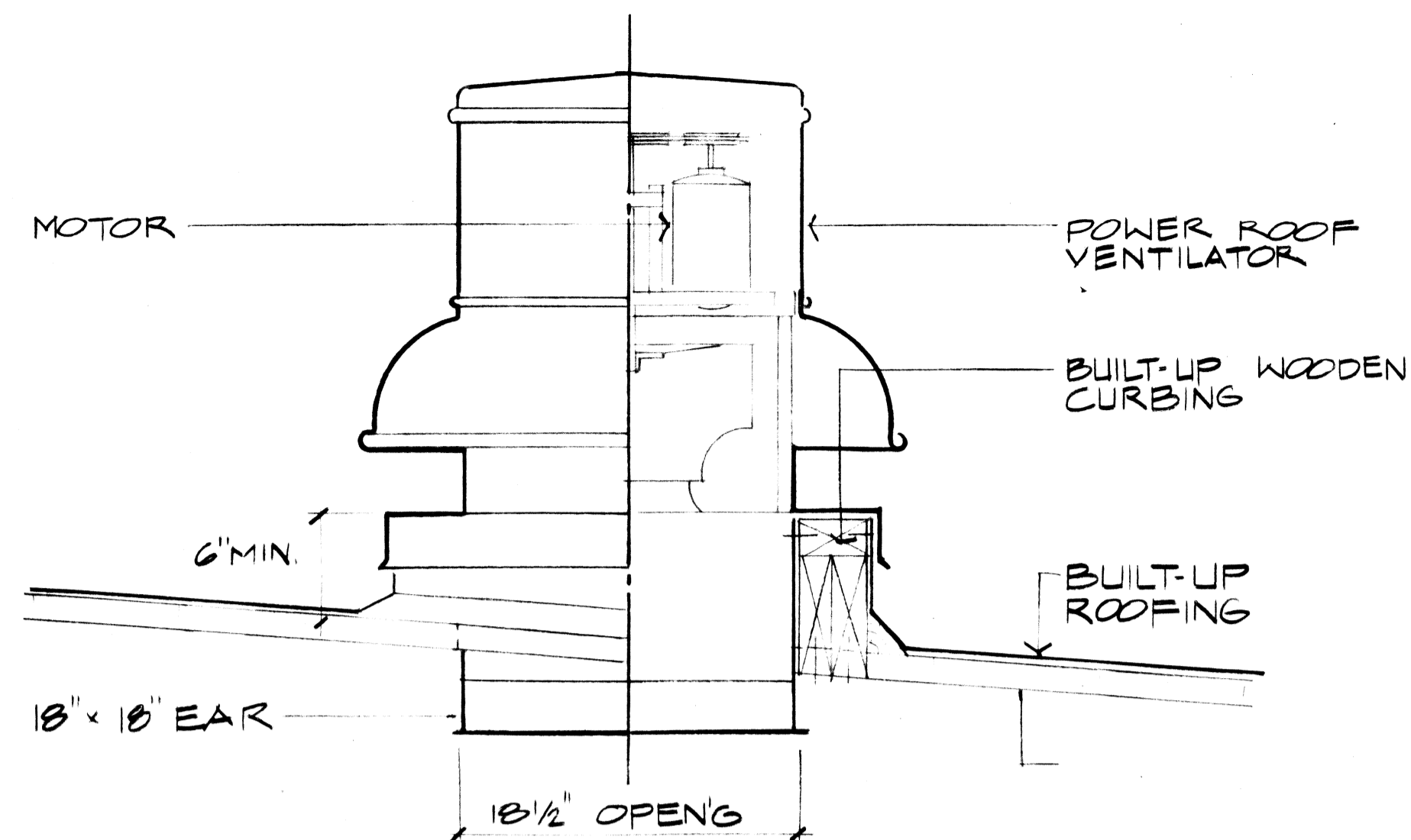
**WATER DIAGRAM**  
NOT TO SCALE

REVISION NO.	SYM.	DESCRIPTION	SHT. OF	DATE	APPROVED STATE PUBLIC WORKS ENGINEER
DEPT. OF ACCOUNTING & GENERAL SERVICES DIVISION OF PUBLIC WORKS STATE OF HAWAII					
<b>ARMY AVIATION SUPPORT FACILITY EXPANSION</b> <b>WHEELER AFB</b>					
<b>PLUMBING DIAGRAMS</b>					
DESIGNED BY: <i>CA</i>		CHECKED BY: <i>MM</i>		DATE: <i>02-14-2020</i>	
DRAWN BY: <i>CA</i>		APPROVED BY: <i>GC</i>		DATE: <i>6-25-84</i>	
SCALE: <i>NONE</i>		FILE NO.: <i>6-25-84</i>		DRAWING NO.: <i>58</i> OF 72 SHTS	

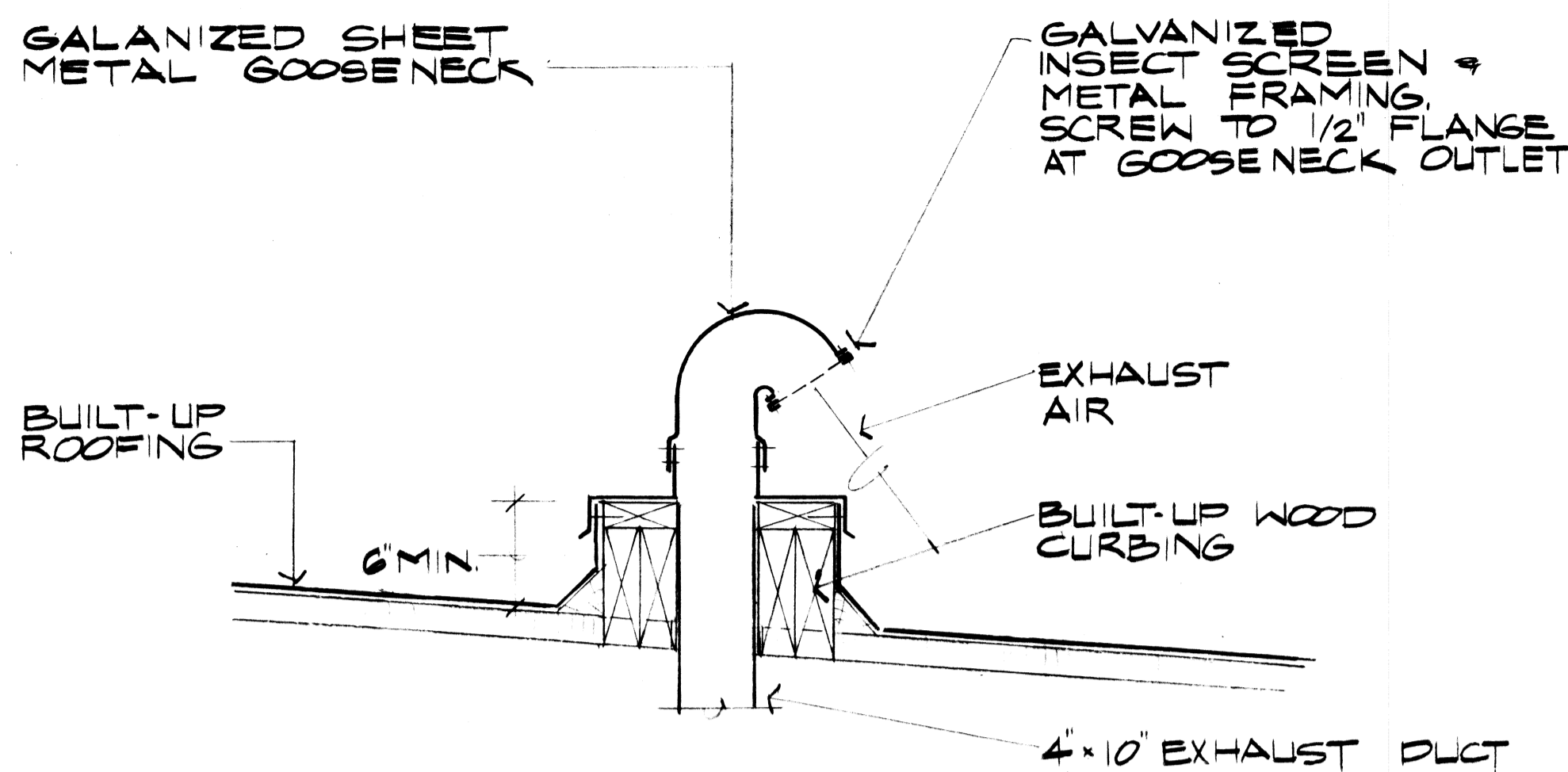




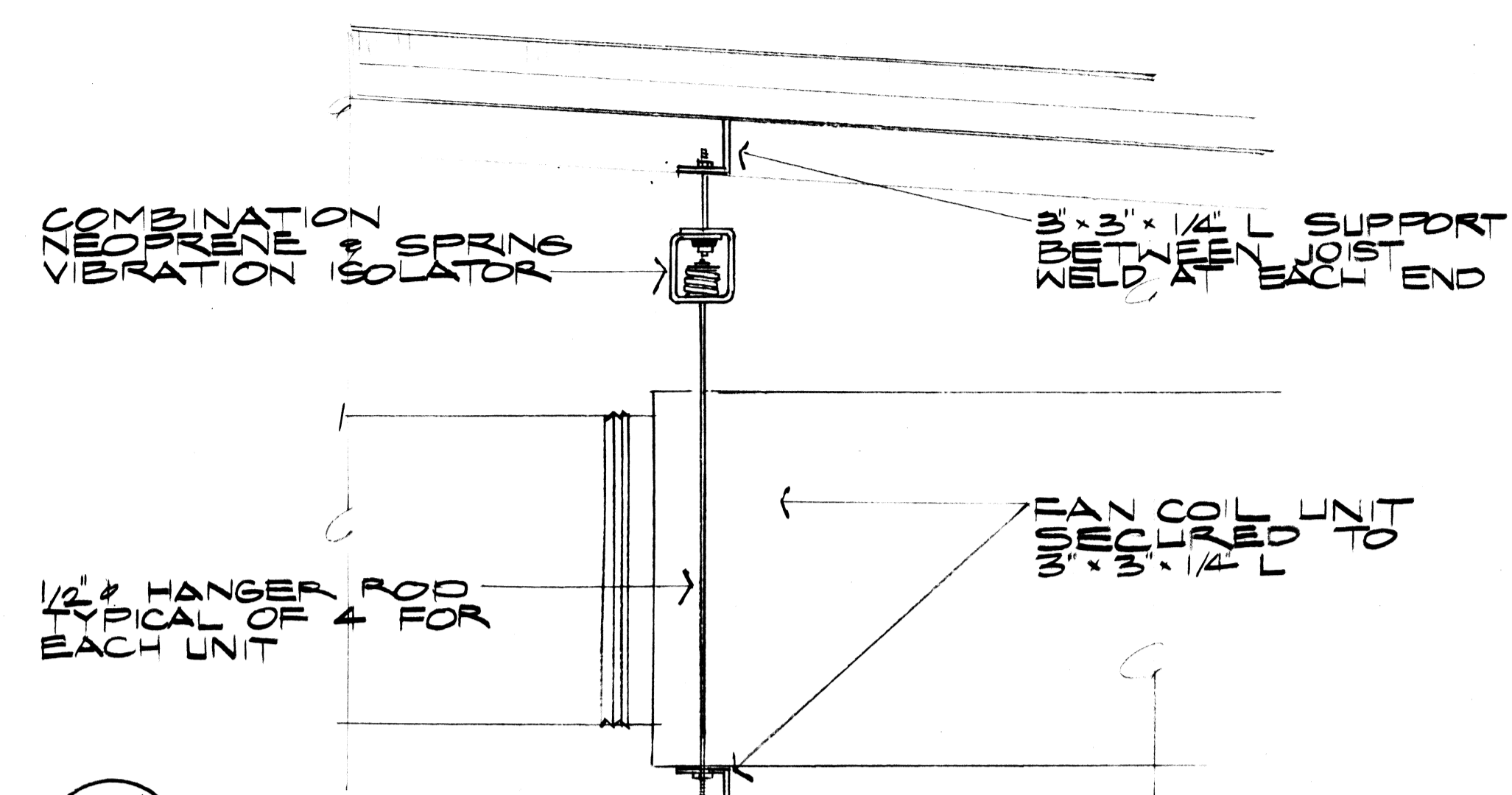




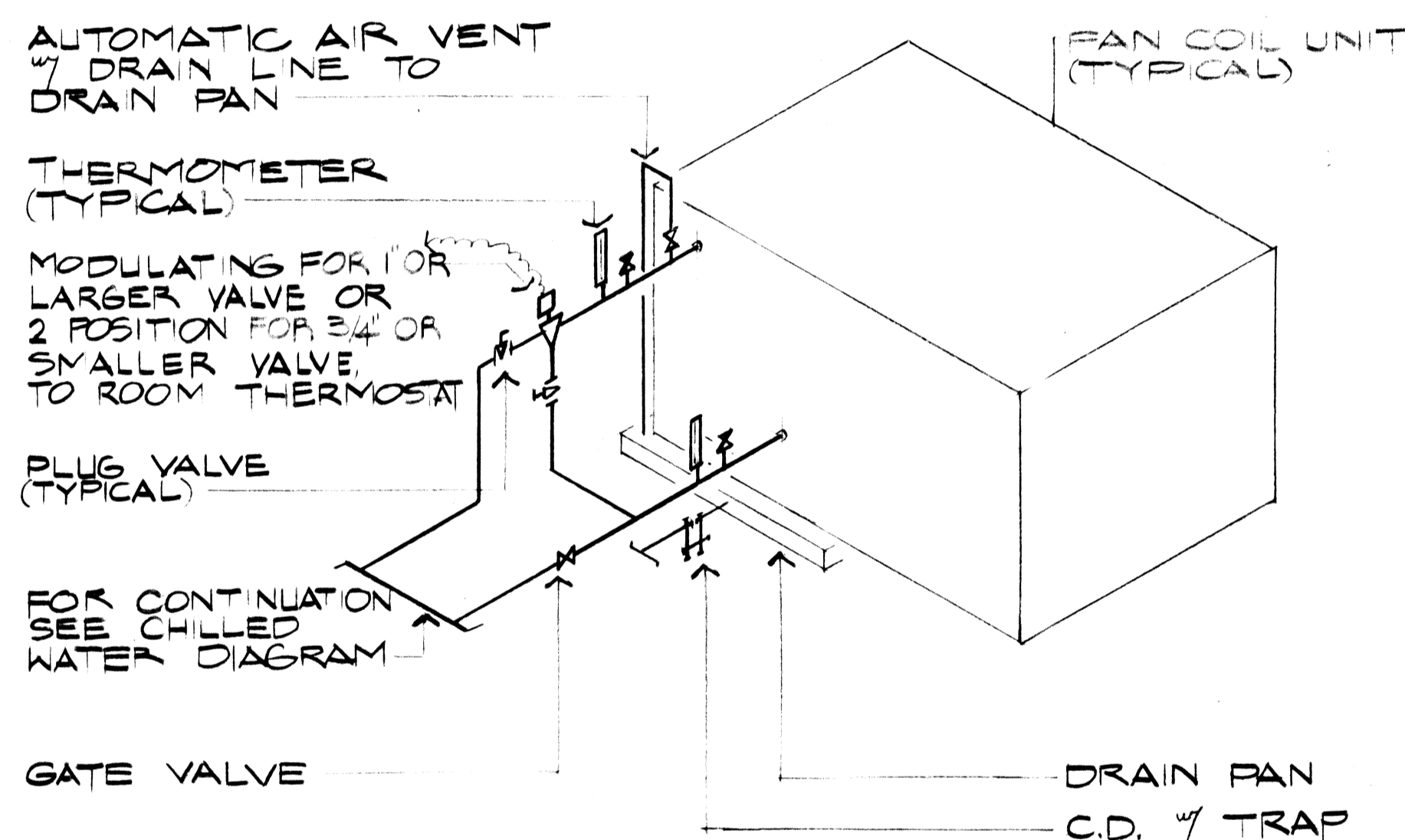
**A EXHAUST FAN CURB DETAIL**  
ME-1 SCALE: 1/2" = 1'-0"



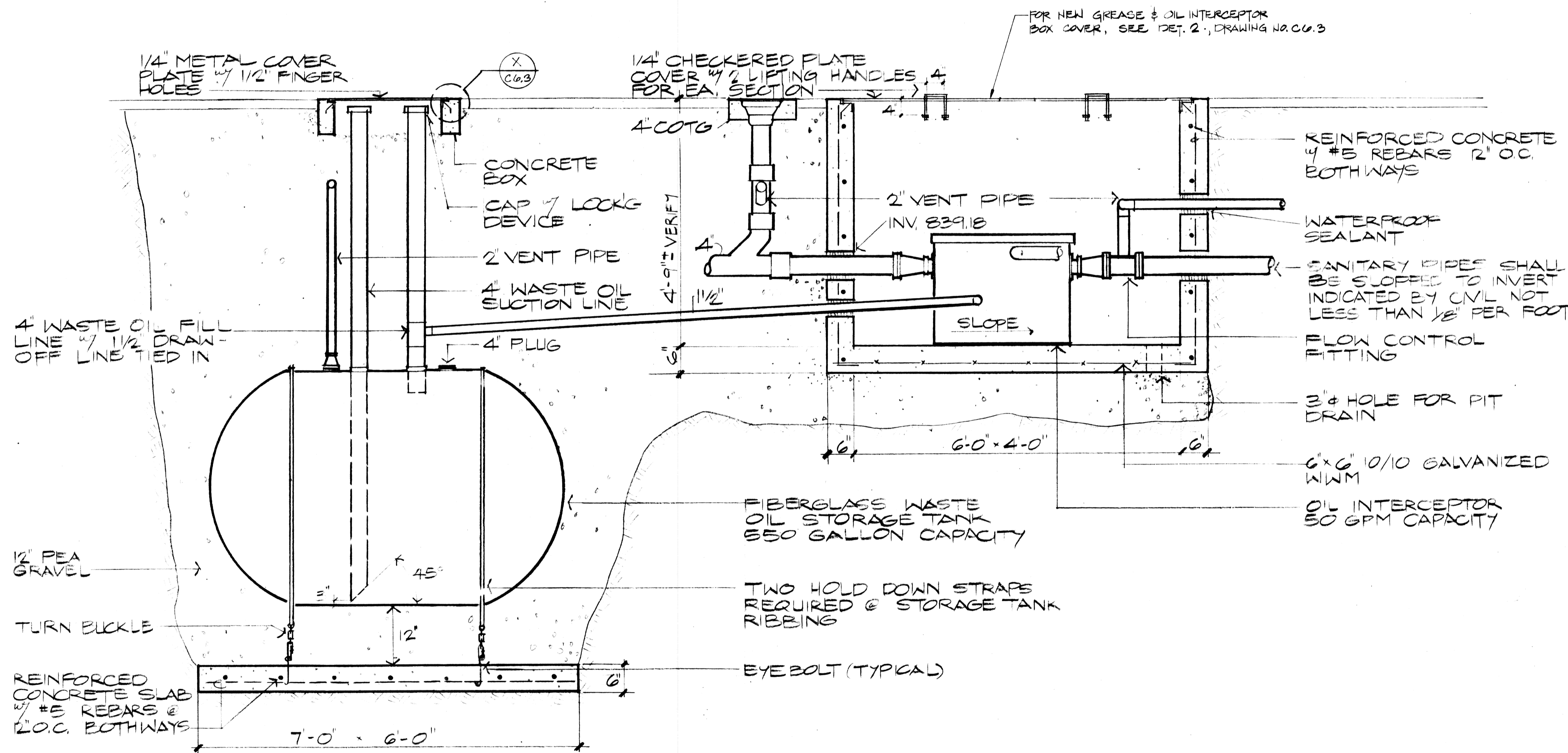
**B GOOSENECK DETAIL**  
ME-1 SCALE: 1/2" = 1'-0"



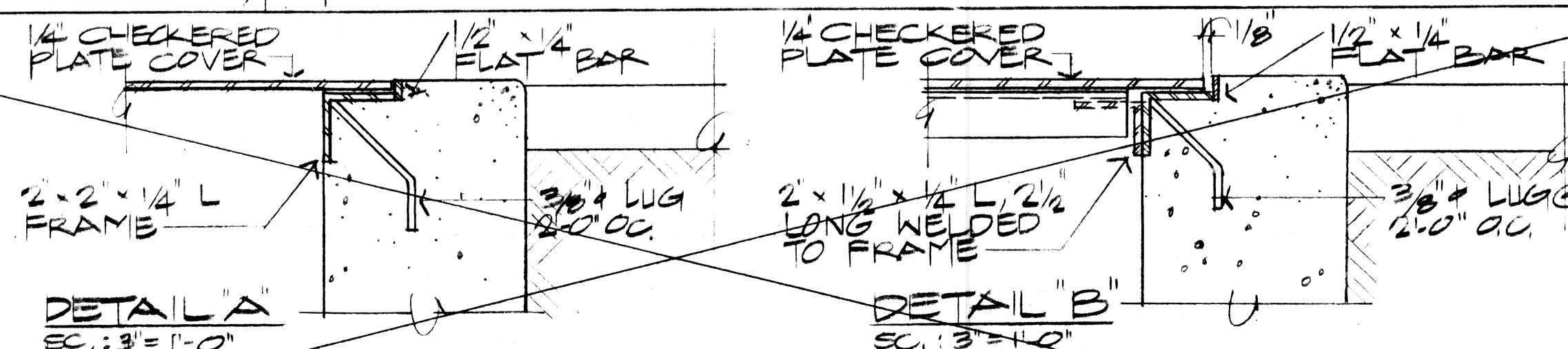
**C EQUIPMENT HANGER DETAIL**  
ME-1 SCALE: 1/2" = 1'-0"



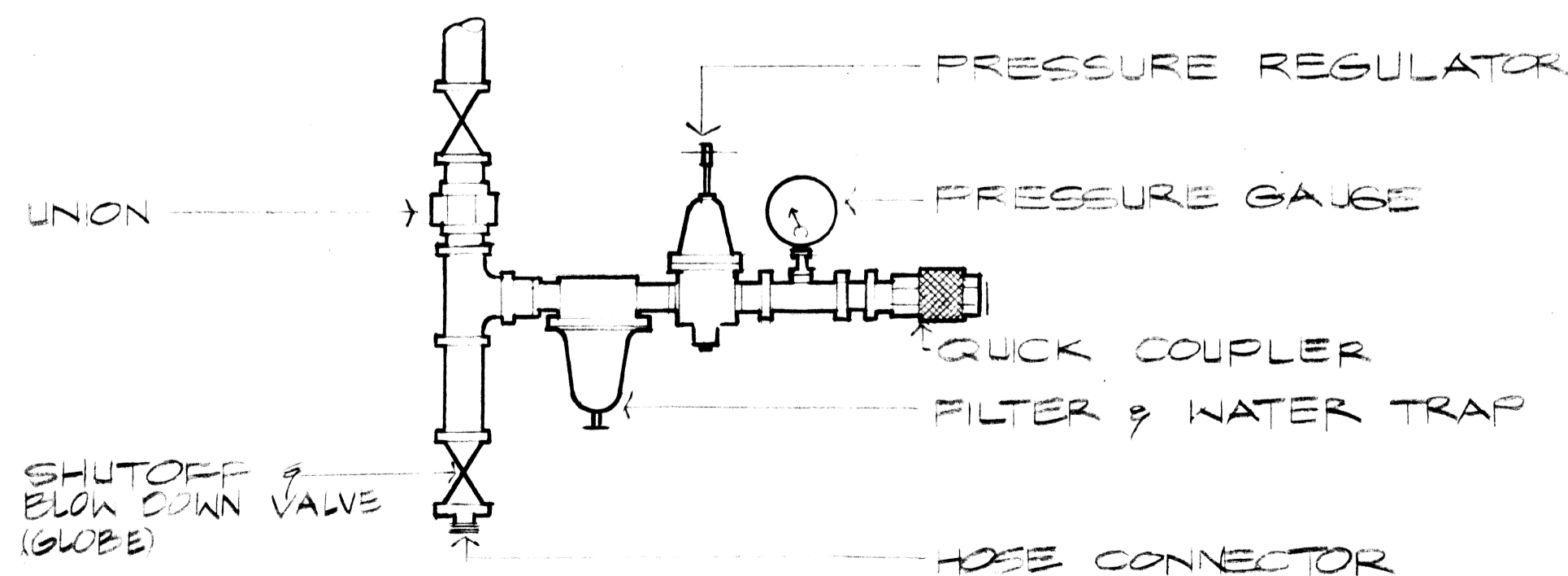
**D CHILLED WATER CONNECTION DIAGRAM**  
ME-1 NOT TO SCALE



**SECTION**  
SCALE: 3/4" = 1'-0"

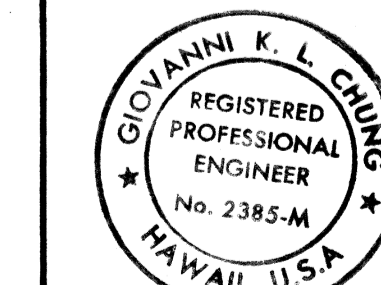


**DETAIL A** SC: 3/4" = 1'-0"  
**DETAIL B** SC: 3/4" = 1'-0"  
**F OIL INTERCEPTOR & STORAGE TANK DETAIL**  
ME-1



**E QUICK COUPLING DETAIL**  
ME-1 NOT TO SCALE

REVISION NO.	SYM.	DESCRIPTION	SHT. OF	DATE	APPROVED STATE PUBLIC WORKS ENGINEER
DEPT. OF ACCOUNTING & GENERAL SERVICES DIVISION OF PUBLIC WORKS STATE OF HAWAII <b>ARMY AVIATION SUPPORT FACILITY EXPANSION</b> WHEELER AFB DETAILS					
DESIGNED BY: MM		CHECKED BY: MM	DATE: 02-14-2000		DRAWING NO. <b>M5.1</b>
DRAWN BY: CA		APPROVED BY: GC	DATE: 02-25-04		
SCALE: AS NOTED		SHEET 60 OF 72 SHTS		FILE DRAWER FOLDER	



THIS WORK WAS PREPARED BY ME OR UNDER MY SUPERVISION.  
By: [Signature]  
Its: [Signature]  
Date: 13 April 1984

O.M.I.T.

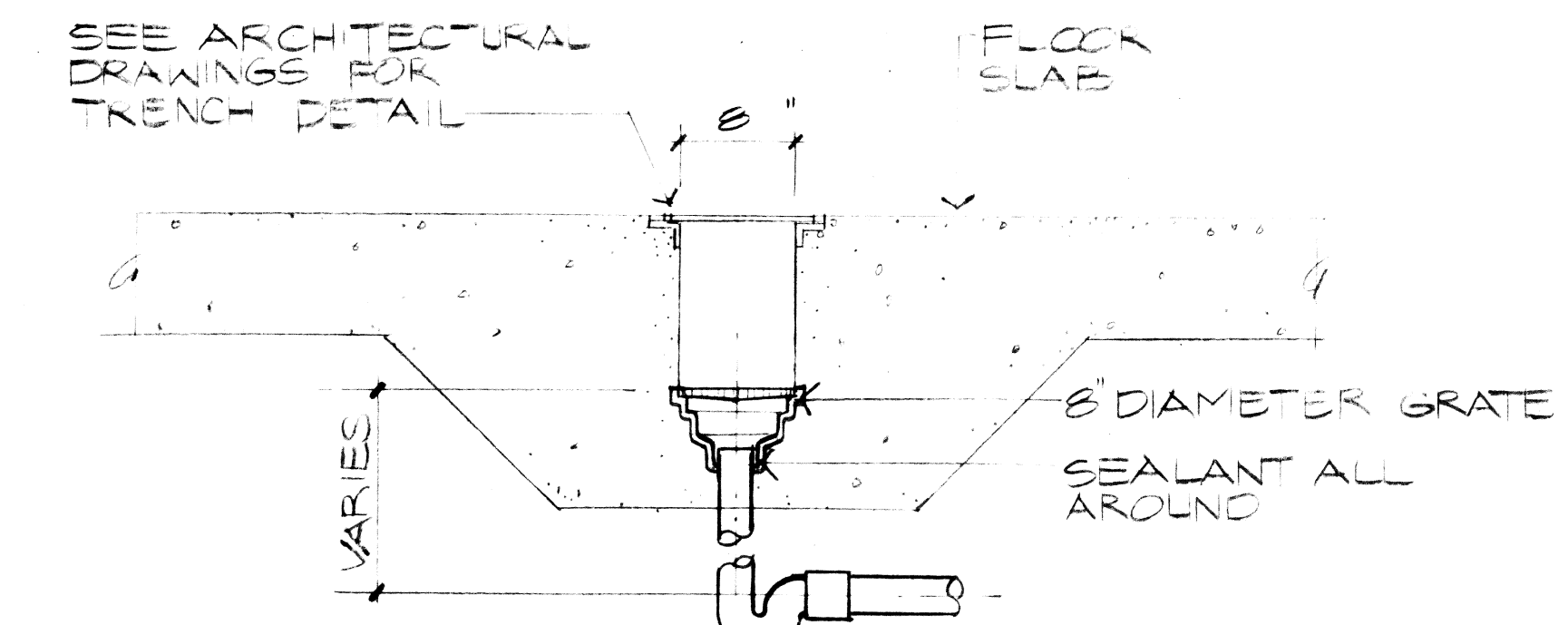
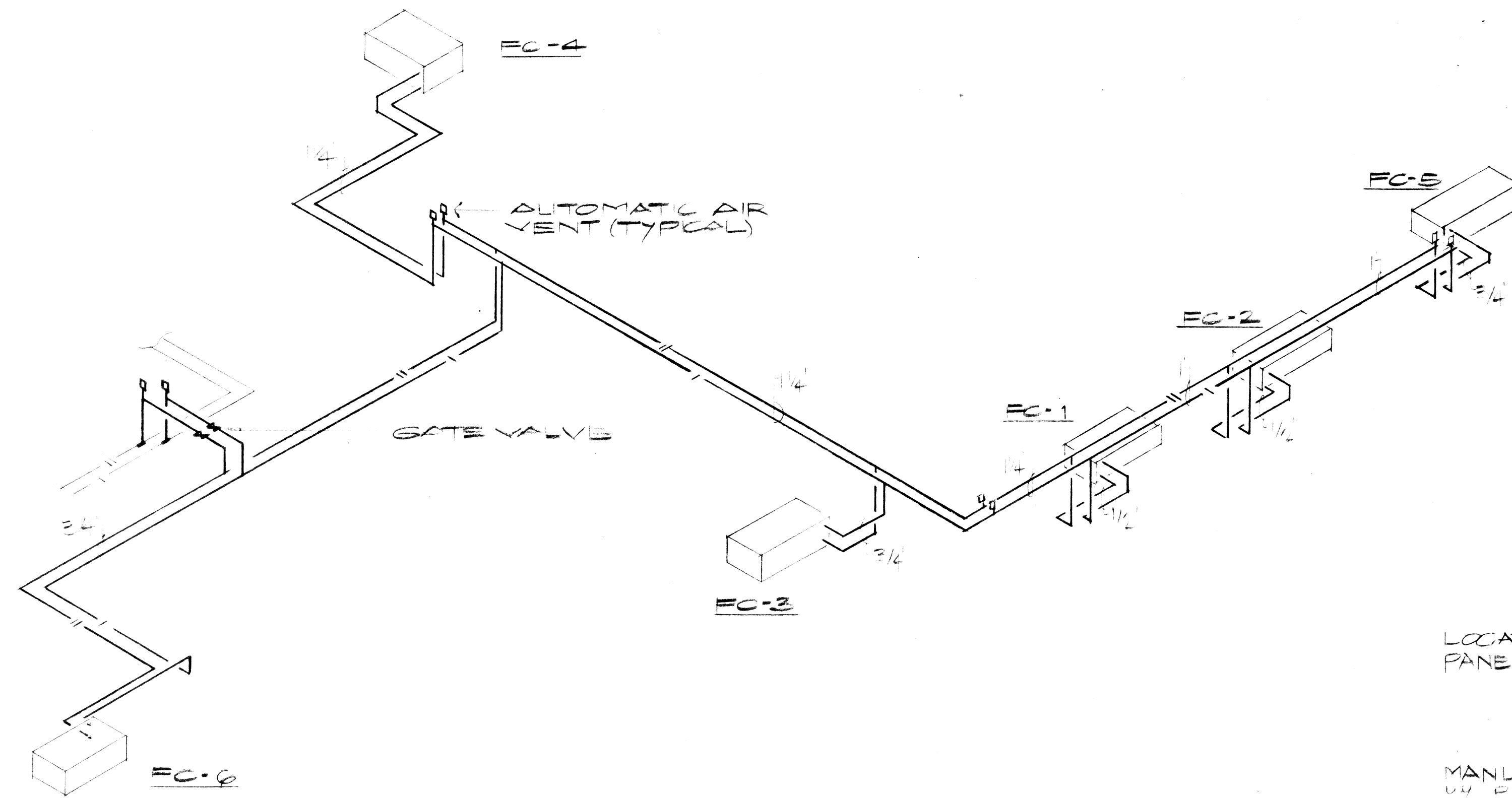


### EXHAUST FAN SCHEDULE

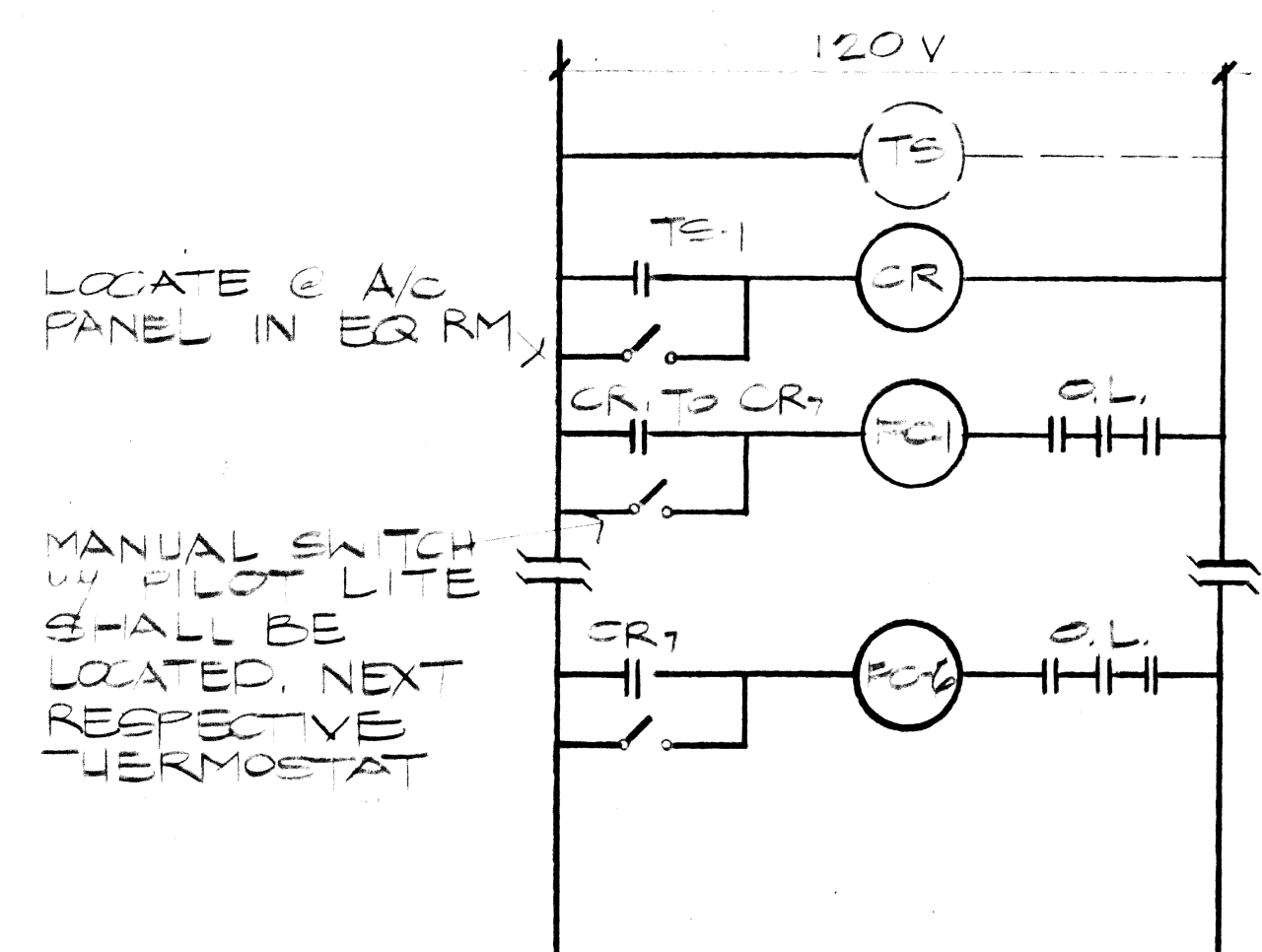
NO.	AREA SERVED	WHEEL DIAMETER	TYPE	DRIVE	MIN CFM	ESP	RPM	HP	V	PH	CY	WGT	REMARKS
EF-1	WOMENS LOCKER	—	CEILING EXH. FAN	DIRECT	216	1/8"	1050	1/4	120	1	60	2.5	INTERLOCKED LITE SWITCH
EF-2	REPAIR PARTS	4"	PRV	DIRECT	1800	1/8"	1040	1/2	120	1	60	340	78
EF-3	BREAK AREA	4"	IN-LINE	BELT	1160	1/4"	800	1/8	120	1	60	320	—
EF-4	PAINT SHOP	30"	TUBE AXIAL	BELT	1000	1/2"	—	2	206	3	60	—	EXISTING - RELOCATED
EF-5 EF-6	PROP & ROTON SHOP	12"	PRV	BELT	420	1/8"	663	1/4	120	1	60	2126	78

### FAN COIL UNIT SCHEDULE

NO.	AREA SERVED	LOCATION	SA CFM	RA CFM	OA CFM	ESP INCH	MIN HP (WATTS)	V	PH	CY	WGT	COOLING COIL DATA				REMARKS			
												ROWS	ENTG AIR	WEIGHT	REMARKS				
FC-1	MAINT OFF	CEILING	125	120	5	1/4"	100W	115	1	60	W	3/12	44	3090	3420	62.7	77.6	150	
FC-2	PROD. CONT.		95	90	5									2320	2660	64	77.7	150	
FC-3	CLERK		420	400	20		320W							10420	11760	62.8	77.6	300	
FC-4	BREAK		1160	0	1160		320W							29235	24850	72	83.7	350	
FC-5	TECH PUB.		510	485	25		320W							12670	14330	62.9	77.8	300	
FC-6	ALSE		340	330	10		131W							9175	8850	63.4	77.5	300	



A FLOOR DRAIN  
SCALE: 1" = 1'-0"



INTERLOCK DIAGRAM  
NTS

REVISION NO.	DATE	DESCRIPTION	APPROVED STATE PUBLIC WORKS ENGINEER

DEPT. OF ACCOUNTING & GENERAL SERVICES  
DIVISION OF PUBLIC WORKS  
STATE OF HAWAII

ARMY AVIATION SUPPORT FACILITY EXPANSION  
WHEELER AFB

SCHEDULES & CHILLED WATER DIAGRAM

DESIGNED BY: MM  
CHECKED BY: GC  
DATE: 6-24-89

DRAWN BY: CA  
APPROVED BY: GC  
DATE: 6-25-89

SCALE: AS NOTED

DRAWING NO. MS-2  
SHEET 61 OF 72 SHEETS