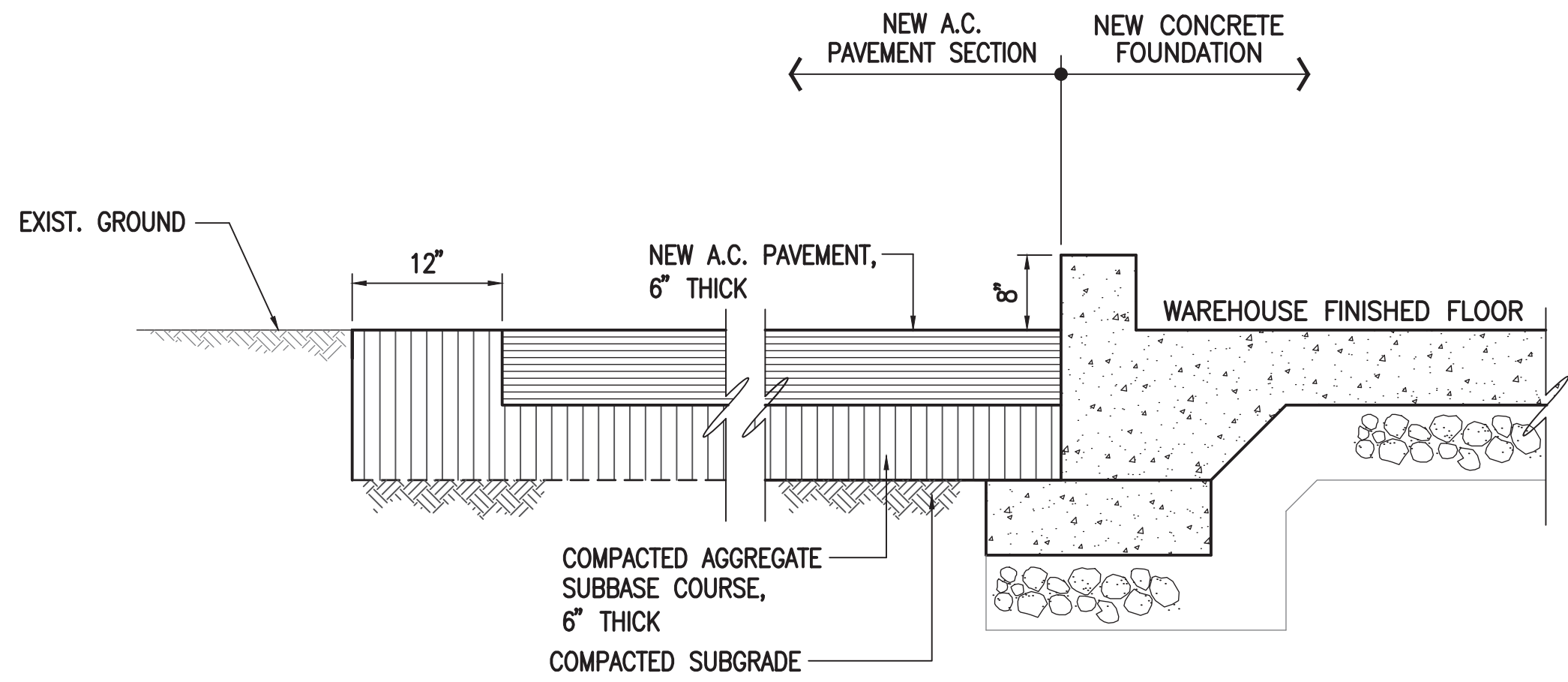


D

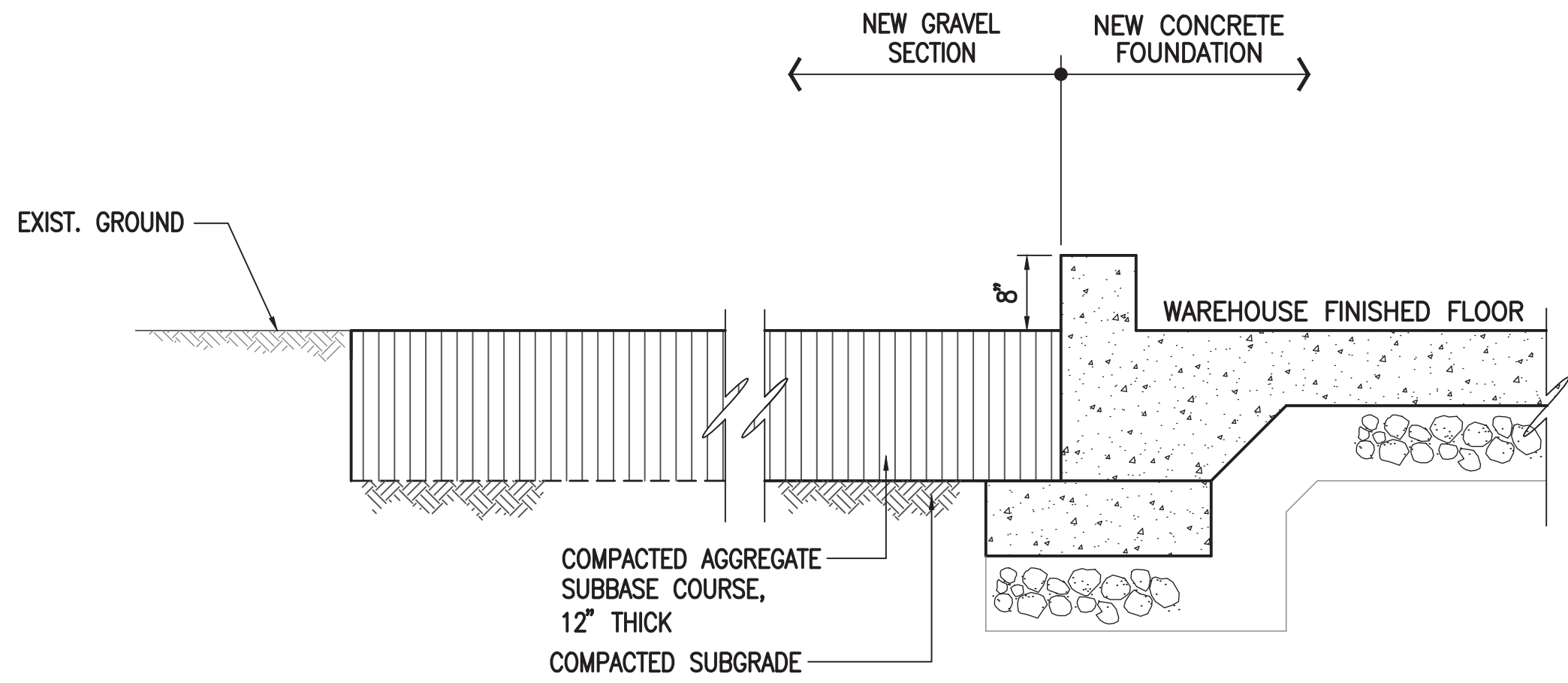
C

B

A



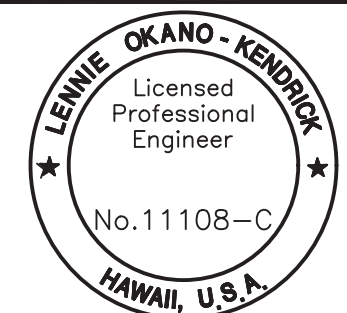
1 A.C. PAVEMENT DETAIL
NOT TO SCALE



2 GRAVEL DETAIL
NOT TO SCALE



Okahara and Associates, Inc.
CONSULTING ENGINEERS
200 KIOHOLA STREET, SUITE 200, KIOHOLA, HAWAII 96751
TEL: (808) 961-5527 FAX: (808) 961-5528



Lemmie Okano-Kenrick
Signature
04/30/2020
Expiration Date of the License

THIS WORK WAS PREPARED BY ME
OR UNDER MY SUPERVISION

SYN	DESCRIPTION	DATE	APPR

SUBMITTAL PHASE		
BID DOCUMENTS		
SUBMITTAL DATE 06/01/18		
DES	DRW	CHK

STATE OF HAWAII	DEPARTMENT OF DEFENSE
FACILITY MANAGEMENT OFFICE	HAWAII ARMY NATIONAL GUARD
POHAKULOA TRAINING AREA	DESIGN AND CONSTRUCTION MANAGEMENT SERVICES
POHAKULOA TRAINING AREA	POHAKULOA, HAWAII
POHAKULOA TRAINING AREA HAWAII: WAREHOUSE	
DETAILS - 2	

SCALE:	AS NOTED
STATE JOB NO.	CA-1807-C
FEDERAL PROJECT NO.	
SHEET	7 OF 27
C202	

D

C

B

A

D

C

B

A

GENERAL NOTES

1.

CONSTRUCTION DOCUMENTS REASONABLY DESCRIBE THE INTENT OF THE QUALITY AND SCOPE OF THE CONSTRUCTION FOR THE PROJECT. WHERE DETAILS ARE NOT SHOWN, THE CONTRACTOR SHALL PROCEED WITH THE WORK WITH AN ACCEPTED QUALITY DEPICTED FROM CONTRACTOR STANDARDS AND PROCEDURES OF THE CONSTRUCTION INDUSTRY IN THE STATE OF HAWAII AS WELL AS THE GENERAL INTENT OF THE CONSTRUCTION DOCUMENTS. CLARIFICATION MAYBE SUBMITTED TO THE CONTRACTING OFFICER FOR REVIEW BEFORE PROCEEDING.
2.

CONTRACTOR SHALL FIELD VERIFY ALL DIMENSIONS, ELEVATIONS, AND CONDITIONS PRIOR TO BEGINNING ANY WORK AND SHALL NOTIFY THE CONTRACTING OFFICER OF ANY DISCREPANCY AND/OR CONDITION WHICH WILL PREVENT HIM/HER FROM FULFILLING THE TERMS OF THE CONTRACT. CONTRACTOR SHALL BE HELD FULLY RESPONSIBLE FOR ALL CORRECTIONS AND REPAIRS DUE TO THEIR FAILURE TO DO SO.
3.

GENERAL CONTRACTOR SHALL REVIEW ALL SHOP DRAWINGS AND COORDINATE THE WORK OF THE VARIOUS TRADES TO FIT ACTUAL CONDITIONS AND MAKE INTERFACING ADJUSTMENTS AS REQUIRED.
4.

QUANTITIES SHOWN AND/OR SPECIFIED IN THE DRAWINGS AND SPECIFICATIONS SHALL BE VERIFIED BY THE CONTRACTOR. CONTRACTOR SHALL BE HELD FULLY RESPONSIBLE FOR ALL QUANTITIES.
5.

SOME NOTES ON THE ARCHITECTURAL SHEETS MAY REQUIRE CIVIL, LANDSCAPE, STRUCTURAL, MECHANICAL, AND/OR ELECTRICAL WORKS. IT IS THE GENERAL CONTRACTOR'S RESPONSIBILITY TO COORDINATE FOR COMPLETE WORK.
6.

WHERE WARRANTIES ARE SPECIFIED, CONTRACTOR'S BID SHALL INCLUDE FULL COMPLIANCE OF ALL CONDITIONS REQUIRED BY THE WARRANTIES. WHERE THE MANUFACTURER'S WARRANTY REQUIREMENTS AND/OR RECOMMENDATION VARY FROM THE REQUIREMENTS OF THE CONSTRUCTION DOCUMENTS, THE CONTRACTOR IS EXPECTED TO COMPLY WITH THE STRICTER OF THE TWO PROVIDED REQUIREMENTS DO NOT VOID WARRANTY. CONTRACTOR SHALL INFORM THE CONTRACTING OFFICER IN WRITING WHERE PROPOSED CONSTRUCTION WILL DEViate FROM THE CONSTRUCTION DOCUMENTS.
7.

THE CONTRACTOR SHALL PROVIDE AND MAINTAIN A SAFETY BARRICADE AROUND THE PROJECT SITE AND SHALL ASSURE THE SAFETY OF THE PUBLIC AT ALL TIMES.
8.

THE CONTRACTOR SHALL BE RESPONSIBLE FOR PROVIDING ALL BLOCKING, BACKING, BRACKETS, ETC. AS REQUIRED FOR THE PROPER AND SECURED INSTALLATION OF ALL MATERIALS AND PRODUCTS.
9.

THE CONTRACTOR SHALL REVIEW THE PROJECT FOR ANY LONG LEAD ITEMS AND PROVIDE SPECIAL CONSIDERATIONS TO AVOID UNNECESSARY DELAYS TO THE COMPLETION OF THE PROJECT.
10.

THE CONTRACT, ADDENDA, SUPPLEMENTAL CONDITIONS, GENERAL REQUIREMENTS, GENERAL CONDITIONS, AND TECHNICAL SPECIFICATIONS SHALL HAVE PRECEDENCE OVER THESE GENERAL NOTES. ANY CONFLICT BETWEEN THESE GENERAL NOTES AND LANGUAGE FOUND IN THE ABOVE DOCUMENTS OR IN THE DRAWINGS OR IN ANY OTHER CONTRACT DOCUMENT SHALL BE BROUGHT TO THE ATTENTION OF THE CONTRACTING OFFICER IMMEDIATELY FOR FURTHER CLARIFICATION.
11.

CONTRACTOR SHALL PROVIDE COMPLETE SYSTEMS AND ASSEMBLIES THAT INCLUDE ALL COMPONENTS NECESSARY FOR A FULLY FUNCTIONAL ASSEMBLY SATISFYING THE DESIGN INTENT, COMPLY WITH THE REQUIREMENTS INDICATED IN THE CONTRACT DOCUMENTS AND READY FOR THE INTENDED USE. REFERENCE CONDITIONS OF THE CONTRACT AND/OR GENERAL REQUIREMENTS FOR ADDITIONAL INFORMATION.
12.

REFERENCE CONDITIONS OF THE CONTRACT AND/OR GENERAL REQUIREMENTS FOR ANY OCCUPANCY RESTRICTIONS OR REQUIREMENTS DURING CONSTRUCTION.
13.

REFERENCE THE CONTRACT AND/OR GENERAL REQUIREMENTS REGARDING REQUIREMENTS FOR DOCUMENTATION AND REPORTING OF FIELD CONDITIONS BY THE CONTRACTOR. CONTRACTOR SHALL COORDINATE WITH THE CONTRACT DOCUMENTS.
14.

REFERENCE CONDITIONS OF THE CONTRACT AND/OR GENERAL REQUIREMENTS REGARDING COORDINATION OF THE WORK OR OTHER SPECIAL COORDINATION REQUIREMENTS.
15.

FLOOR ELEVATIONS ARE INDICATED TO THE TOP SURFACE OF THE "STRUCTURAL" SLAB, UNLESS NOTED OTHERWISE.
16.

CEILING HEIGHTS ARE INDICATED FROM FLOOR ELEVATIONS TO THE FINISH FACE OF SUSPENDED CEILING SYSTEMS OR FACE OF FINISH MATERIALS, AS INDICATED OR SCHEDULED.
17.

DIMENSIONS SHOWN ON THE DRAWINGS SHALL INDICATE THE REQUIRED SIZES, CLEARANCES, AND DIMENSIONAL RELATIONSHIPS BETWEEN PROJECT SYSTEMS, ASSEMBLIES AND COMPONENTS. DIMENSIONS SHALL NOT BE DETERMINED BY SCALING THE DRAWINGS.
18.

WHERE EQUIPMENT OR COMPONENTS HAVE DIMENSIONAL VARIATION DEPENDENT ON THE SELECTED MANUFACTURER, THE CONTRACTOR SHALL BE RESPONSIBLE TO COORDINATE ADJOINING CONSTRUCTION TO ACCOMMODATE THE SELECTED MANUFACTURER'S REQUIREMENTS.
19.

REFERENCE DIVISION 01 OF THE PROJECT MANUAL FOR ADDITIONAL REQUIREMENTS FOR COORDINATION OF DRAWINGS AND DIMENSIONS.
20.

"REPLACE" MEANS TO REMOVE EXISTING AND TO PROVIDE AND INSTALL ITEM TO MATCH THE EXISTING DESIGN SUCH AS MATERIAL, THICKNESS, COLOR, QUALITY, CONSTRUCTION, ETC., UNLESS OTHERWISE DETAILED OR NOTED. CONTRACTOR SHALL FIELD VERIFY EXISTING CONDITIONS AND DESIGN PRIOR TO REMOVAL.
21.

ALL MATERIALS, ITEMS, NOTED IN THE DRAWINGS ARE "NEW" UNLESS NOTED OTHERWISE.
22.

CONTRACTOR SHALL PATCH ALL SURFACES EXPOSED FROM CUTTING, AND OR REMOVAL WORK. PATCH SHALL MATCH THE MATERIAL AND FINISH OF ADJACENT SURFACES.
23.

THE CONTRACTOR SHALL PROTECT ALL ITEMS, IN ADJACENT AREAS WITHIN THE PROJECT SITE FROM DAMAGE. DAMAGE TO BUILDINGS, LANDSCAPING, LAWN, HOSE BIBS, ETC., BY THE CONTRACTOR, THE CONTRACTOR'S EMPLOYEES, SUBCONTRACTORS AND EQUIPMENT, SHALL BE REPLACED AND/OR REPAIRED AT NO EXTRA COST TO THE GOVERNMENT.
24.

ALL EXISTING ITEMS AND/OR FINISHES SCHEDULED TO REMAIN, BUT DAMAGED DURING CONSTRUCTION, SHALL BE CORRECTED TO MATCH THE EXISTING MATERIAL AND FINISHES AT NO EXTRA COST TO THE GOVERNMENT.
25.

ALL WASTE MATERIALS SHALL BE PROMPTLY REMOVED AND PROPERLY DISPOSED OF OUTSIDE THE LIMITS OF STATE'S PROPERTY DAILY.
26.

CONTRACTOR SHALL PROTECT ALL EXISTING SURFACES DURING CONSTRUCTION. THE COST FOR MATERIAL, LABOR, INSTALLATION AND REMOVAL SHALL BE INCLUDED IN THE SCOPE OF WORK. ALL DAMAGES SHALL BE REPAIRED AND/OR REPLACED TO MATCH ADJACENT SURFACES AND TO THE SATISFACTION OF THE CONTRACTING OFFICER.
27.

THE CONTRACTOR WITH THE SUPERVISION OF THE CONTRACTING OFFICER SHALL INSPECT AND NOTE ALL EXISTING DAMAGES PRIOR TO THE START OF WORK. ANY NEW DAMAGES RESULTING FROM THE CONSTRUCTION SHALL BE CORRECTED AT THE CONTRACTOR'S COST.
28.

THE CONTRACTOR SHALL VISIT THE SITE, COMPARE THE DRAWINGS AND SPECIFICATIONS AND VERIFY ALL CONDITIONS IN ORDER TO COMPLETE THE PROJECT IN ACCORDANCE WITH THE INTENT OF THE DRAWINGS.
29.

BEFORE ANY SERVICE IS DISCONNECTED OR INTERRUPTED, THE CONTRACTOR SHALL VERIFY USAGE AND ASSURE THAT REQUIRED SERVICES ARE NOT DISCONNECTED OR INTERRUPTED. ANY REQUIRED SERVICE DISCONNECTED OR INTERRUPTED SHALL BE RESTORED IMMEDIATELY BY THE CONTRACTOR AT NO ADDITIONAL COST TO THE STATE.
30.

CONTRACTOR SHALL SUBMIT IN WRITING ANY REQUEST FOR MODIFICATION TO THE PLANS AND SPECIFICATIONS. UNLESS CHANGES ARE SUBMITTED IN WRITING AND APPROVED BY THE CONTRACTING OFFICER, CHANGES OR MODIFICATIONS TO THE PLANS AND SPECIFICATIONS BECOME THE RESPONSIBILITY OF THE PERSON INITIATING SUCH CHANGES.
31.

STRUCTURES UNDERGOING CONSTRUCTION, ALTERATION, OR DEMOLITION OPERATIONS, INCLUDING THOSE IN UNDERGROUND LOCATIONS, SHALL COMPLY WITH NFPA 241, STANDARD FOR SAFEGUARDING CONSTRUCTION, ALTERATION, AND DEMOLITION OPERATIONS, AND THIS CHAPTER. 2012 NFPA 1.
32.

THE CONTRACTOR SHALL PROTECT ALL ITEMS IN AND ABOVE GROUND WITHIN THE PROJECT SITE AND ADJACENT PROPERTIES FROM DAMAGES. DAMAGES TO BUILDINGS, SIDEWALKS, UTILITY LINES (PLUMBING, ELECTRICAL, TELEPHONE, DATA, ETC.), LANDSCAPING, LAWN, HOSE BIBS, ETC., BY THE CONTRACTOR, THE CONTRACTOR'S EMPLOYEES, SUBCONTRACTORS, AND EQUIPMENT SHALL BE REPLACED AND/OR REPAIRED AT NO ADDITIONAL COST TO THE STATE. THE CONTRACTOR IS ALSO RESPONSIBLE TO RESTORE THE GROUNDS (GRASSING AND LANDSCAPE IRRIGATION) AND CONCRETE WALKWAYS USED FOR PARKING AND STAGING.
33.

THIS PROJECT SHALL CONFORM TO THE CURRENT ABA STANDARDS FOR ACCESSIBLE DESIGN.
- FINISH NOTES:

1.

ALL CONDUIT, JUNCTION BOXES, RACEWAYS, AND OTHER EXPOSED ELECTRICAL ITEMS TO BE PAINTED SHALL MATCH ADJACENT SURFACES.

2.

ALL STRUCTURAL SUPPORTS AND ATTACHMENTS, IE. UNISTRUT, ATTACHMENTS, BOLTS, WOOD/ STEEL SUPPORTS, ETC. TO BE PAINTED SHALL MATCH ADJACENT SURFACES.

3.

ALL EXPOSED MECHANICAL DUCTS/ ENCLOSURES TO BE PAINTED SHALL MATCH ADJACENT SURFACES.

4.

ALL ITEMS INDICATED ABOVE TO BE PAINTED SHALL MATCH ADJACENT SURFACES UNLESS NOTED OTHERWISE ON THE DRAWINGS.
- DEFINITIONS:

1.

"TYPICAL" OR "TYP." INDICATES IDENTICAL COMPLETE SYSTEM, ASSEMBLY OR COMPONENT SHALL BE PROVIDED FOR EACH OCCURRENCE OF THE CONDITION NOTED.

2.

"SIMILAR" INDICATES COMPLETE SYSTEM, ASSEMBLY AND COMPONENTS SHALL BE PROVIDED, INCLUDING ANY ADJUSTMENTS REQUIRED DUE TO VARIATION AT A PARTICULAR CONDITION, RESULTING IN COMPARABLE CHARACTERISTICS FOR THE "SIMILAR" CONDITION NOTED. THE CONTRACTING OFFICER SHALL BE THE SOLE JUDGE OF A SIMILAR CONDITION'S COMPLIANCE WITH THE DESIGN INTENT.

2

3

ARCHITECTURAL ABBREVIATIONS

<div>A</div> <div>ADJ</div> <div>AFF</div> <div>ACOUST</div> <div>ALUM</div> <div>AT</div> <div>Ⓢ</div>	<div>ADJUSTABLE</div> <div>ABOVE FINISH FLOOR</div> <div>ACOUSTICAL</div> <div>ALUMINUM</div> <div>ACOUSTICAL TILE</div> <div>AT</div>
<div>B</div> <div>BD</div> <div>BLDG</div> <div>BLK</div> <div>BLKG</div> <div>BM</div> <div>BOT</div>	<div>BOARD</div> <div>BUILDING</div> <div>BLOCK</div> <div>BLOCKING</div> <div>BEAM</div> <div>BOTTOM</div>
<div>C</div> <div>CAR</div> <div>CAB</div> <div>CLG</div> <div>Ⓢ</div> <div>CLR</div> <div>CMU</div>	<div>CARPET</div> <div>CABINET</div> <div>CEILING</div> <div>CENTER LINE</div> <div>CLEAR</div> <div>CONCRETE</div> <div>MASONRY UNIT</div> <div>COUNTER</div> <div>COLUMN</div> <div>CONCRETE</div> <div>CONTINUOUS</div> <div>CARPET</div> <div>CERAMIC TILE</div>
<div>D</div> <div>DC</div> <div>DEMO</div> <div>DET</div> <div>DF</div> <div>DIA OR ⌀</div> <div>DIM</div> <div>DISP</div> <div>DN</div> <div>DR</div> <div>DS</div> <div>DWG</div> <div>DWR</div>	<div>DISPLAY CASE</div> <div>DEMOLISH</div> <div>DETAIL</div> <div>DRINKING FOUNTAIN</div> <div>DIAMETER</div> <div>DIMENSION</div> <div>DISPOSABLE</div> <div>DOWN</div> <div>DOOR</div> <div>DOWNSPOUT</div> <div>DRAWING</div> <div>DRAWER</div>
<div>E</div> <div>EA</div> <div>EL</div> <div>ELEC</div> <div>ELEV</div> <div>EQ</div> <div>(E)</div> <div>EXIST</div> <div>EXT</div>	<div>EACH</div> <div>ELEVATION</div> <div>ELECTRICAL</div> <div>ELEVATOR</div> <div>EQUAL</div> <div>EXISTING</div> <div>EXISTING</div> <div>EXTERIOR</div>
<div>F</div> <div>FEC</div>	<div>FIRE EXTINGUISHER</div> <div>CABINET</div>
<div>FF</div> <div>FL/FLR</div> <div>FR</div> <div>FT</div> <div>FLUOR</div>	<div>FINISH FLOOR</div> <div>FLOOR</div> <div>FRAME</div> <div>FOOT OR FEET</div> <div>FLUORESCENT</div>
<div>G</div> <div>GA</div> <div>GC</div>	<div>GAUGE</div> <div>GENERAL</div> <div>CONTRACTOR</div>
<div>GL</div> <div>GYP</div>	<div>GRID LINE</div> <div>GYPSPUM</div>
<div>H</div> <div>HDCP/HC</div> <div>HDWE/HDWR</div> <div>HIARNG</div>	<div>HANDICAPPED</div> <div>HARDWARE</div> <div>HAWAII AIR NATIONAL</div> <div>GUARD</div>
<div>HR</div> <div>H/HT/HGT</div> <div>HS</div> <div>HWY</div>	<div>HOUR</div> <div>HEIGHT</div> <div>HAND SINK</div> <div>HIGHWAY</div>
<div>I</div> <div>INSUL</div> <div>INT</div>	<div>INSULATION</div> <div>INTERIOR</div>
<div>J</div> <div>JB</div>	<div>JUNCTION BOX</div>
<div>L</div> <div>LAM</div> <div>LAV</div>	<div>LAMINATED</div> <div>LAVATORY</div>
<div>M</div> <div>MTD</div> <div>MAX</div> <div>MECH</div> <div>MET/MTL</div> <div>MFR/MFG</div> <div>MIN</div> <div>MIR</div> <div>MISC</div> <div>MTL</div>	<div>MOUNTED</div> <div>MAXIMUM</div> <div>MECHANICAL</div> <div>METAL</div> <div>MANUFACTURER</div> <div>MINIMUM</div> <div>MIRROR</div> <div>MISCELLANEOUS</div> <div>METAL</div>
<div>N</div> <div>NIC</div> <div>NO OR #</div> <div>NTS</div> <div>(N)</div>	<div>NOT IN CONTRACT</div> <div>NUMBER</div> <div>NOT TO SCALE</div> <div>NEW</div>
<div>O</div> <div>OC</div> <div>OPP</div>	<div>ON CENTER</div> <div>OPPOSITE</div>
<div>P</div> <div>PEMB</div>	<div>PRE-ENGINEERED</div> <div>METAL BUILDING</div>
<div>PLAM</div> <div>PLYWD</div> <div>PT</div> <div>PTD</div>	<div>PLASTIC LAMINATE</div> <div>PLYWOOD</div> <div>PAINT</div> <div>PAPER TOWEL</div> <div>DISPENSER</div>
<div>R</div> <div>RB</div> <div>RD</div> <div>REF</div> <div>REQ'D</div> <div>REV</div> <div>RF</div> <div>RM</div> <div>RO</div> <div>RPTD/WR</div>	<div>RUBBER BASE</div> <div>ROOF DRAIN</div> <div>REFRIGERATOR</div> <div>REQUIRED</div> <div>REVISION/ REVISED</div> <div>RESILIENT FLOOR</div> <div>ROOM</div> <div>ROUGH OPENING</div> <div>RECESSED PAPER</div> <div>TOWEL DISPENSER/</div> <div>WASTE RECEPTACLE</div>
<div>S</div> <div>SC</div> <div>SD</div> <div>SST</div> <div>SCHED</div> <div>SECT</div> <div>SHT</div> <div>SIM</div> <div>SL</div> <div>SQ</div> <div>SST</div> <div>STD</div> <div>STL</div> <div>STOR</div> <div>STRL/STRUCT</div> <div>SUSP</div>	<div>SOLID CORE</div> <div>SOAP DISPENSER</div> <div>STAINLESS STEEL</div> <div>SCHEDULE</div> <div>SECTION</div> <div>SHEET</div> <div>SIMILAR</div> <div>SLOPE</div> <div>SQUARE</div> <div>STAINLESS STEEL</div> <div>STANDARD</div> <div>STEEL</div> <div>STORAGE</div> <div>STRUCTURAL</div> <div>SUSPENDED</div>
<div>T&G</div> <div>TB</div> <div>TBD</div> <div>THK</div> <div>THRU</div> <div>TMK</div> <div>TPH</div> <div>TSC</div> <div>TYP</div>	<div>TONGUE AND GROOVE</div> <div>TACK BOARD</div> <div>TO BE DETERMINED</div> <div>THICK</div> <div>THROUGH</div> <div>TAX MAP KEY</div> <div>TOILET PAPER HOLDER</div> <div>TOILET SEAT COVER</div> <div>TYPICAL</div>
<div>U</div> <div>UL</div> <div>UON</div>	<div>UNDERWRITER'S</div> <div>LABORATORIES</div> <div>UNLESS OTHERWISE</div> <div>NOTED</div> <div>URINAL</div>
<div>UR</div>	
<div>V</div> <div>VERT</div> <div>VCT</div> <div>VIF</div>	<div>VERTICAL</div> <div>VINYL COMPOSITION TILE</div> <div>VERIFY IN FIELD</div>
<div>W</div> <div>WB</div> <div>W/WT</div> <div>WC</div> <div>WR</div> <div>W/</div> <div>W/O</div>	<div>WHITE BOARD</div> <div>WIDTH</div> <div>WATER CLOSET</div> <div>WASTE RECEPTICLE</div> <div>WITH</div> <div>WITHOUT</div>

DRAWING SYMBOLS LEGEND

- DETAIL REFERENCE

X

DRAWING TITLE

SCALEXX:
- NORTH

NORTH

NORTH ARROW
- A

AB

BC

CD

DA

INTERIOR ELEVATION DESIGNATION
- KEY TO INT ELEV
- 1

GRID LINE
- OFFICE

101

ROOM NAME

ROOM NO.
- 01

A-01

02

A-01

DETAIL REFERENCE

BUILDING SECTION

BUILDING ELEVATION

SHEET NO.
- 03

A-01

04

A-01

DETAIL REFERENCE

DETAILED OBJECT

SHEET NO.
- 01

A-01

SECTION REFERENCE
- 01

REVISION NUMBER
- P

MATERIAL

FINISH SELECTION CODE NUMBER
- L

2

LOUVER NUMBER
- 1

WINDOW NUMBER
- 1

PARTITION TYPE



Signature: [Signature] 04/30/2020 Expiration Date of the License

THIS WORK WAS PREPARED BY ME OR UNDER MY SUPERVISION

NO.	DATE	DESCRIPTION	SYN.

SUBMITAL PHASE

BID DOCUMENTS

SUBMITAL DATE: 06/01/18

DES. [] DRW. [] CHK. []

STATE OF HAWAII	DEPARTMENT OF DEFENSE	HAWAII ARMY NATIONAL GUARD	DESIGN AND CONSTRUCTION MANAGEMENT SERVICES	POHAKULOA, HAWAII
FACILITY MANAGEMENT OFFICE				POHAKULOA TRAINING AREA
				POHAKULOA TRAINING AREA HAWAII: WAREHOUSE
				GENERAL NOTES, DRAWING SYMBOLS, ARCHITECTURAL ABBREVIATIONS

SCALE: AS NOTED

STATE JOB NO. CA-1807-C

FEDERAL PROJECT NO.

SHEET 008 OF 27

A001

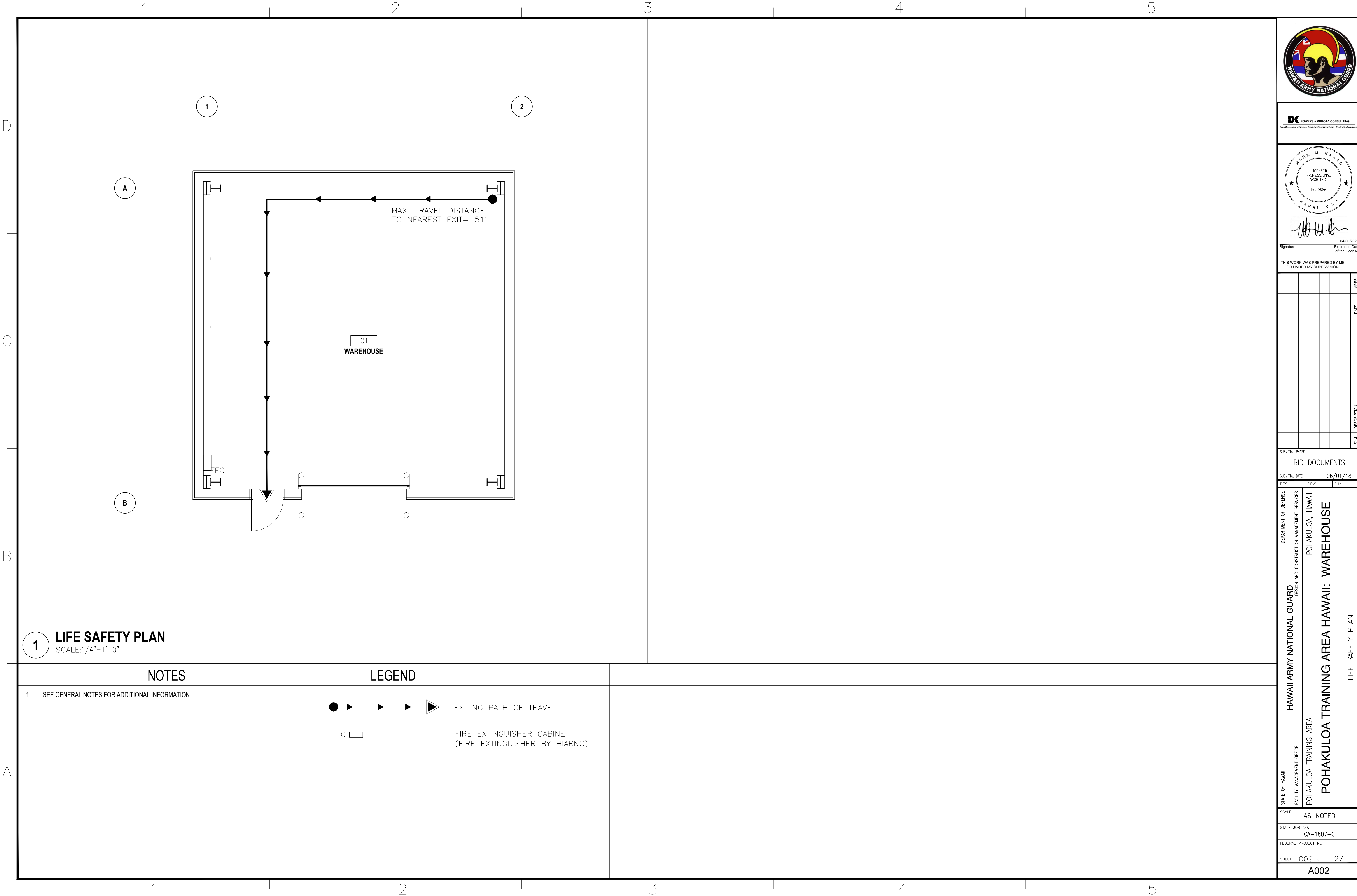
1

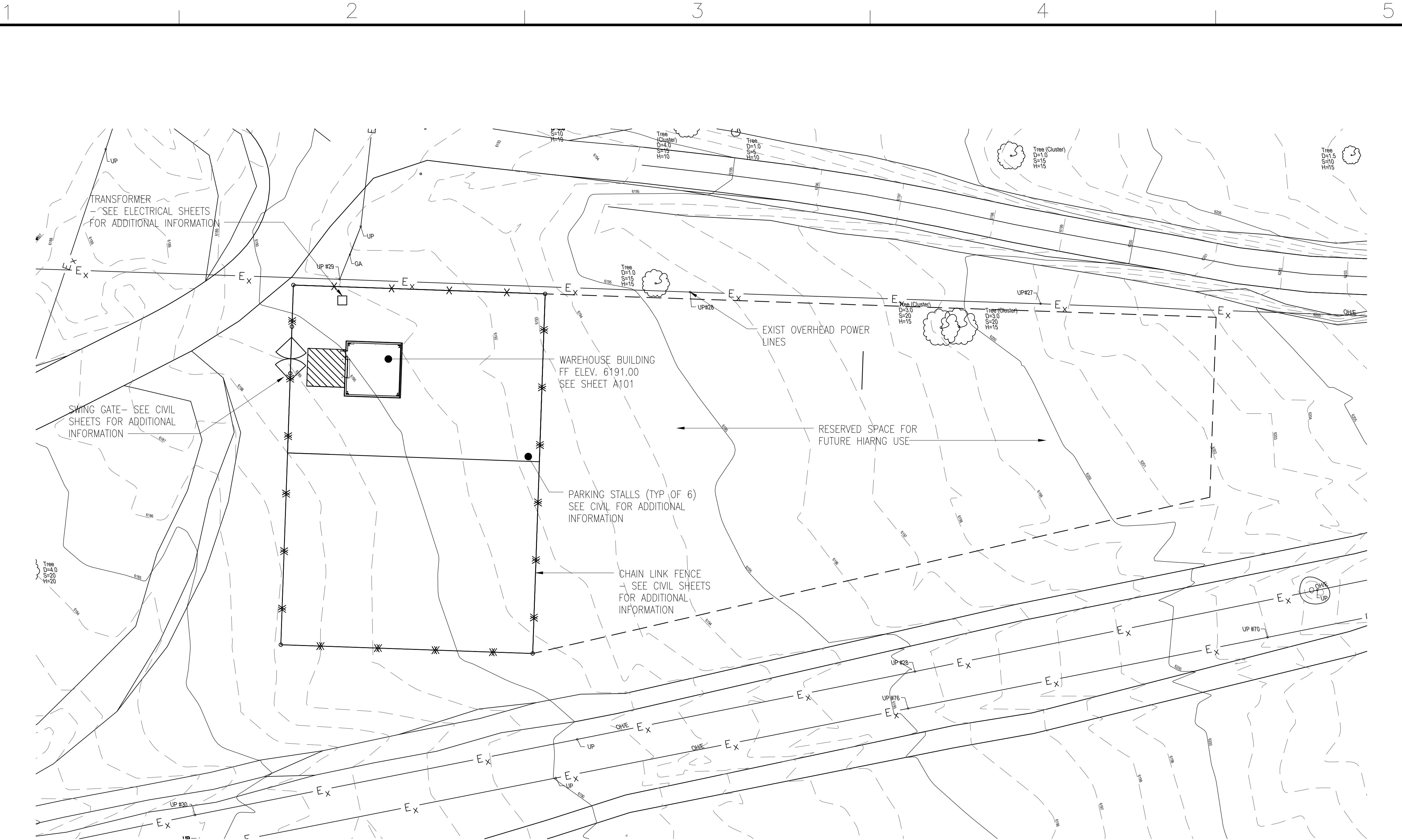
2

3

4

5





1 SITE PLAN
SCALE: 1/32" = 1'-0"



NOTES

1. SEE GENERAL NOTES FOR ADDITIONAL INFORMATION
2. CONTRACTOR TO FIELD VERIFY ALL EXISTING CONDITIONS
3. REFER TO CIVIL AND ELECTRICAL FOR ADDITIONAL INFORMATION



BOWERS + KUBOTA CONSULTING
Project Management • Planning • Architecture/Engineering Design • Construction Management



Signature: *[Handwritten Signature]*
04/30/2020
Expiration Date of the License

THIS WORK WAS PREPARED BY ME
OR UNDER MY SUPERVISION

DATE	DESCRIPTION	BY

SUBMITAL PHASE

BID DOCUMENTS

SUBMITAL DATE 06/01/18

DES DRW CHG

DEPARTMENT OF DEFENSE
HAWAII ARMY NATIONAL GUARD
DESIGN AND CONSTRUCTION MANAGEMENT SERVICES
POHAKULOLO, HAWAII
POHAKULOLO TRAINING AREA
POHAKULOLO TRAINING AREA HAWAII: WAREHOUSE
SITE PLAN

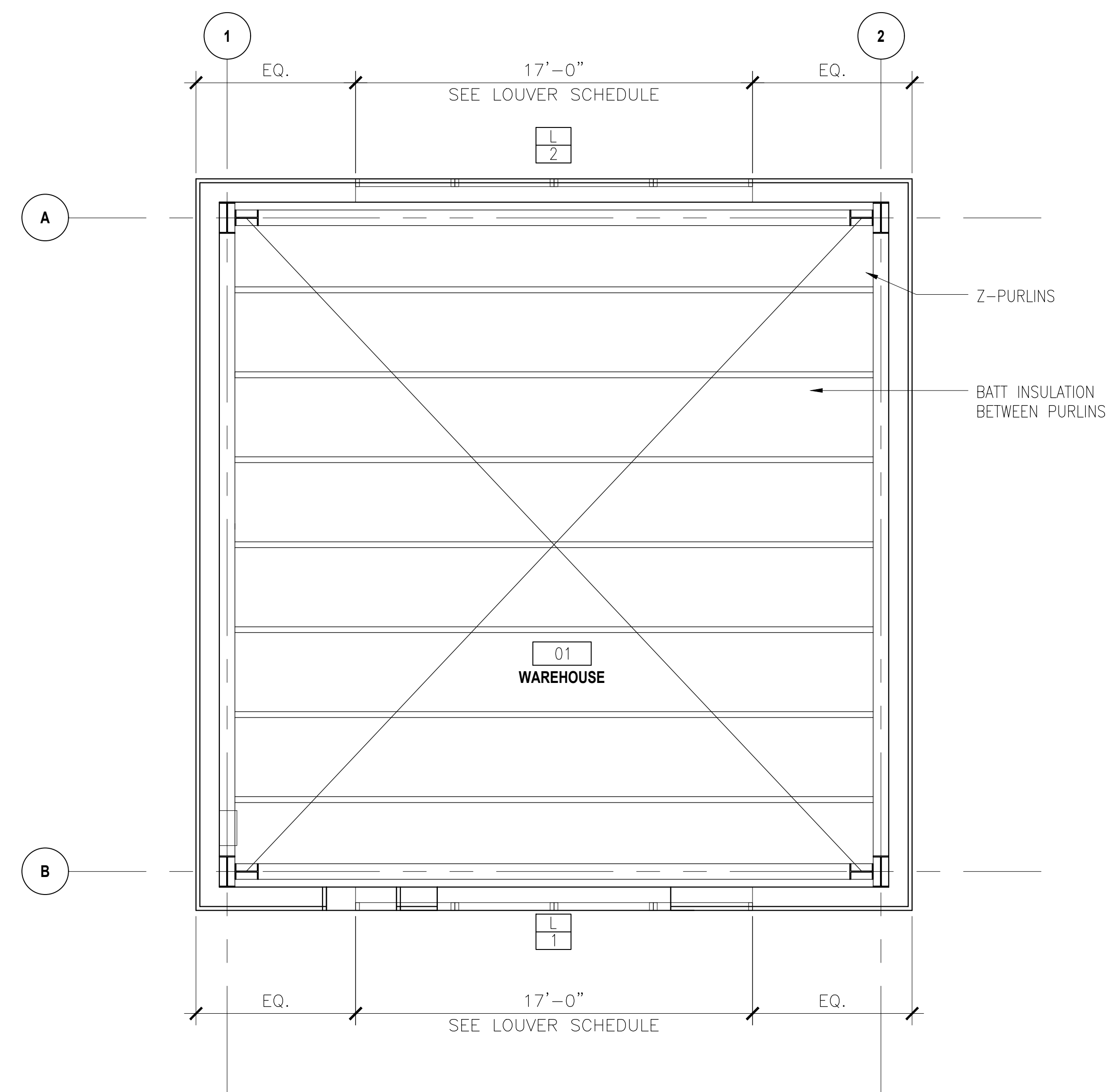
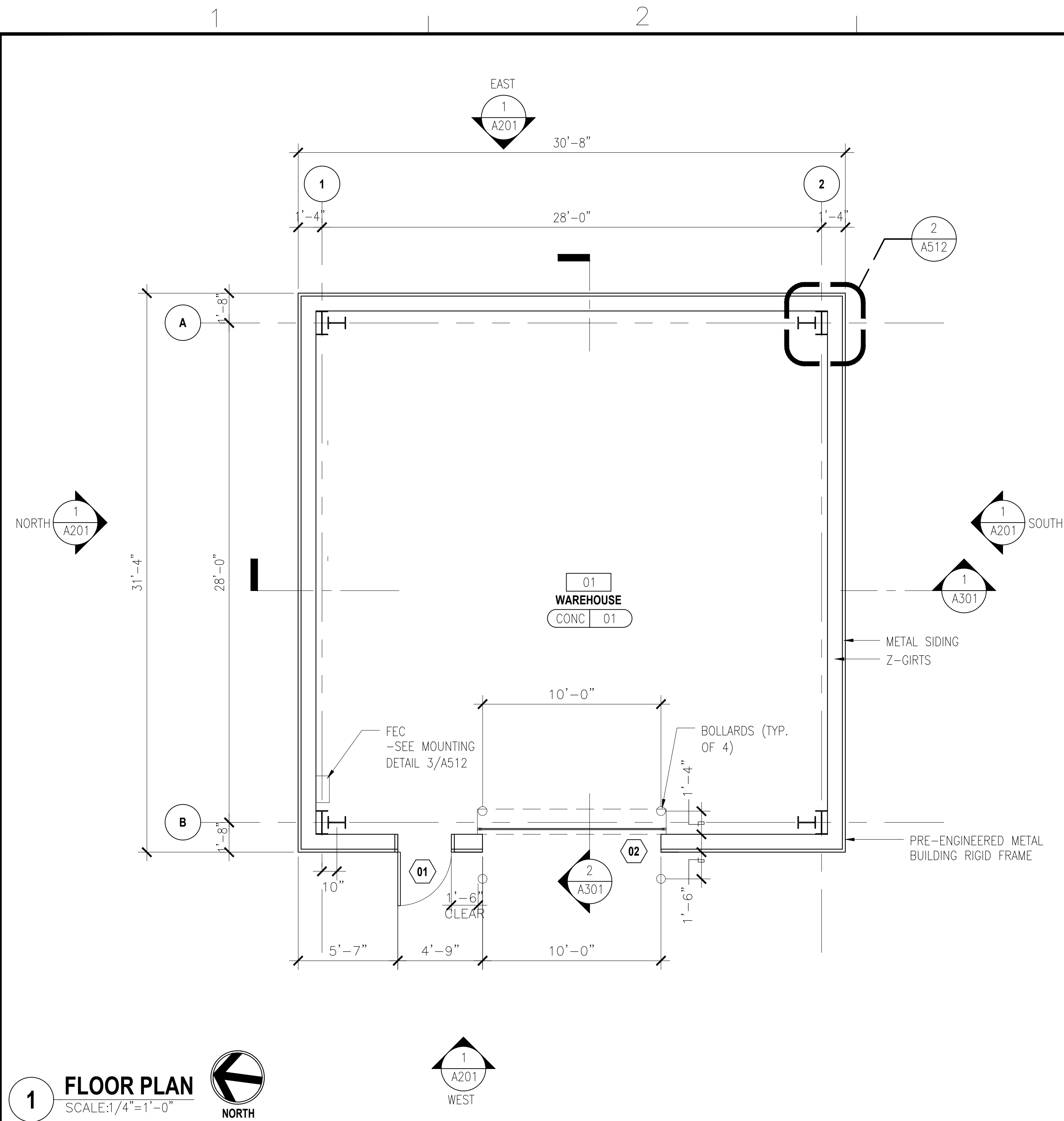
SCALE: AS NOTED

STATE JOB NO. CA-1807-C

FEDERAL PROJECT NO.

SHEET 010 OF 27


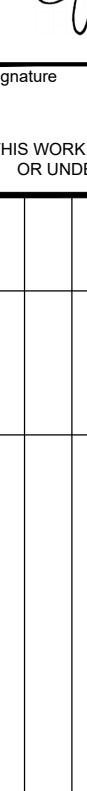

AS101

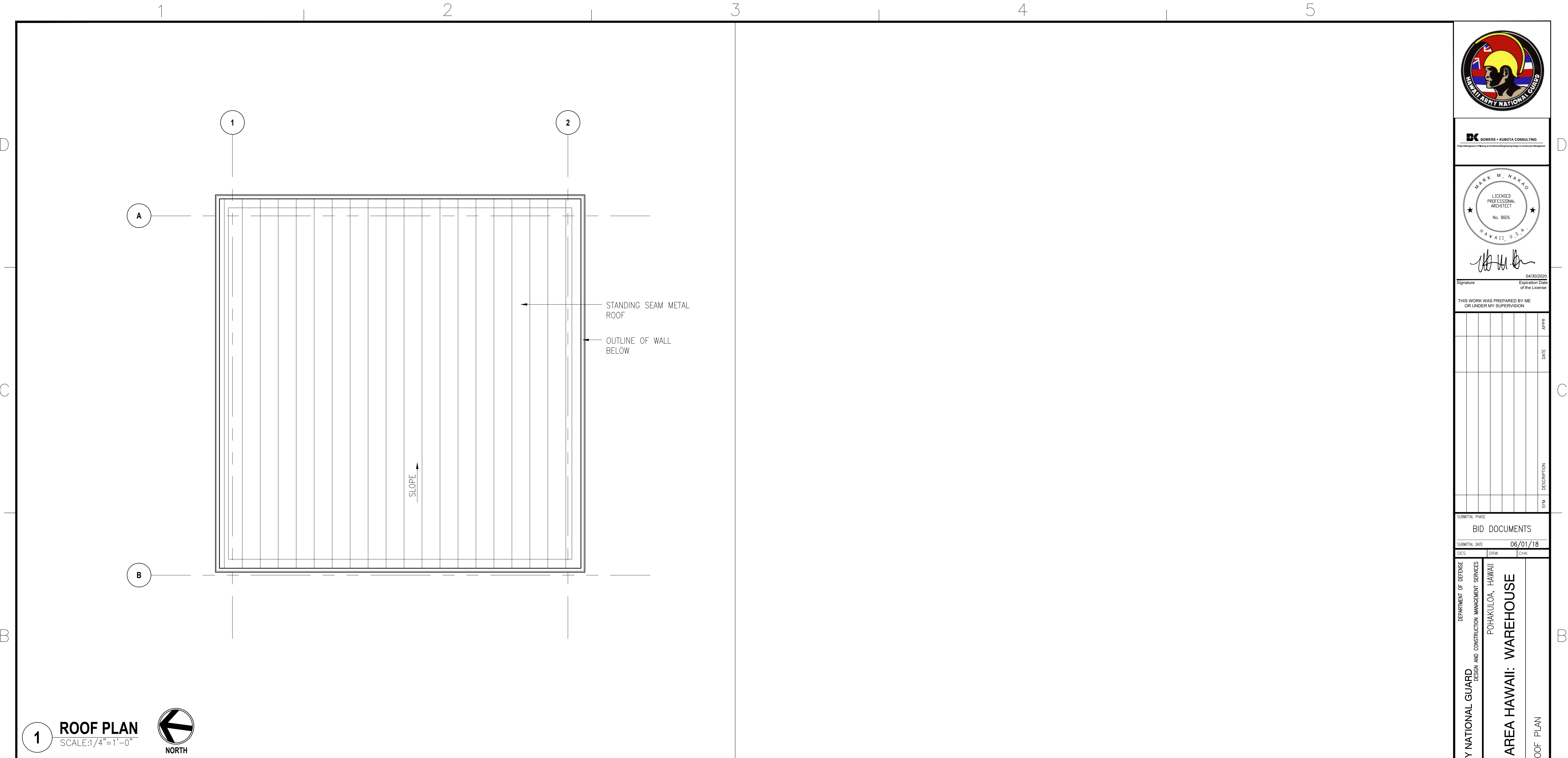


NOTES

1. SEE GENERAL NOTES FOR ADDITIONAL INFORMATION
2. CONTRACTOR TO FIELD VERIFY ALL EXISTING CONDITIONS
3. REFER TO CIVIL AND ELECTRICAL FOR ADDITIONAL INFORMATION
4. REFER TO FINISH SCHEDULE FOR FINISH INFORMATION
5. ALL DIMENSIONS ARE TAKEN FROM FACE OF FINISH MATERIAL, TYP.

2 REFLECTED CEILING PLAN
SCALE: 1/4" = 1'-0"

		
BK BOWERS • KUBOTA CONSULTING <small>Project Management • Planning & Architecture/Engineering Design • Construction Management</small>		
 		
Signature _____ Expiration Date 04/30/2020 of the License		
THIS WORK WAS PREPARED BY ME OR UNDER MY SUPERVISION		
SUBMITTAL PHASE		
BID DOCUMENTS		
SUBMITTAL DATE 06/01/18		
DES	DRAW	CHK
<div style="float: left; width: 30%;">STATE OF HAWAII</div> <div style="float: right; width: 30%;">DEPARTMENT OF DEFENSE</div> <div style="clear: both;"></div> <div style="float: left; width: 30%;">FACILITY MANAGEMENT OFFICE</div> <div style="float: right; width: 30%;">DESIGN AND CONSTRUCTION MANAGEMENT SERVICES</div> <div style="clear: both;"></div> <div style="float: left; width: 30%;">POHAKULOOA TRAINING AREA</div> <div style="float: right; width: 30%;">POHAKULOOA, HAWAII</div> <div style="clear: both;"></div> <div style="float: left; width: 30%;">POHAKULOOA TRAINING AREA</div> <div style="float: right; width: 30%;">POHAKULOOA TRAINING AREA HAWAII: WAREHOUSE</div> <div style="clear: both;"></div> <div style="float: left; width: 30%;">SCALE:</div> <div style="float: right; width: 30%;">AS NOTED</div> <div style="clear: both;"></div> <div style="float: left; width: 30%;">STATE JOB NO.</div> <div style="float: right; width: 30%;">CA-1807-C</div> <div style="clear: both;"></div> <div style="float: left; width: 30%;">FEDERAL PROJECT NO.</div> <div style="float: right; width: 30%;"></div> <div style="clear: both;"></div> <div style="float: left; width: 30%;">SHEET</div> <div style="float: right; width: 30%;">O 11 OF 27</div> <div style="clear: both;"></div> <div style="float: left; width: 30%;">A101</div> <div style="float: right; width: 30%;"></div> <div style="clear: both;"></div>		
FLOOR PLAN, REFLECTED CEILING PLAN		

[illegible]

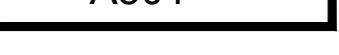
- | | |
|--|--|
| <div style="display: flex; justify-content: space-between;"> <div> 1. SEE GENERAL NOTES FOR ADDITIONAL INFORMATION
 2. CONTRACTOR TO FIELD VERIFY ALL EXISTING CONDITIONS
 3. REFER TO CIVIL AND ELECTRICAL FOR ADDITIONAL INFORMATION
 4. REFER TO FINISH SCHEDULE FOR FINISH INFORMATION </div> <div style="width: 80%;"></div> </div> | <div style="display: flex; justify-content: space-between;"> <div> STATE OF HAWAII
 FACILITY MANAGEMENT OFFICE </div> <div> HAWAII
 POHAKULOLOA TRAINING AREA
 POHAKULOLOA TRAINING AREA </div> </div> |
| | SCALE: AS NOTED |
| | STATE JOB NO. CA-1807-C |
| | FEDERAL PROJECT NO. |
| | SHEET 012 OF 27 |
| | A111 |



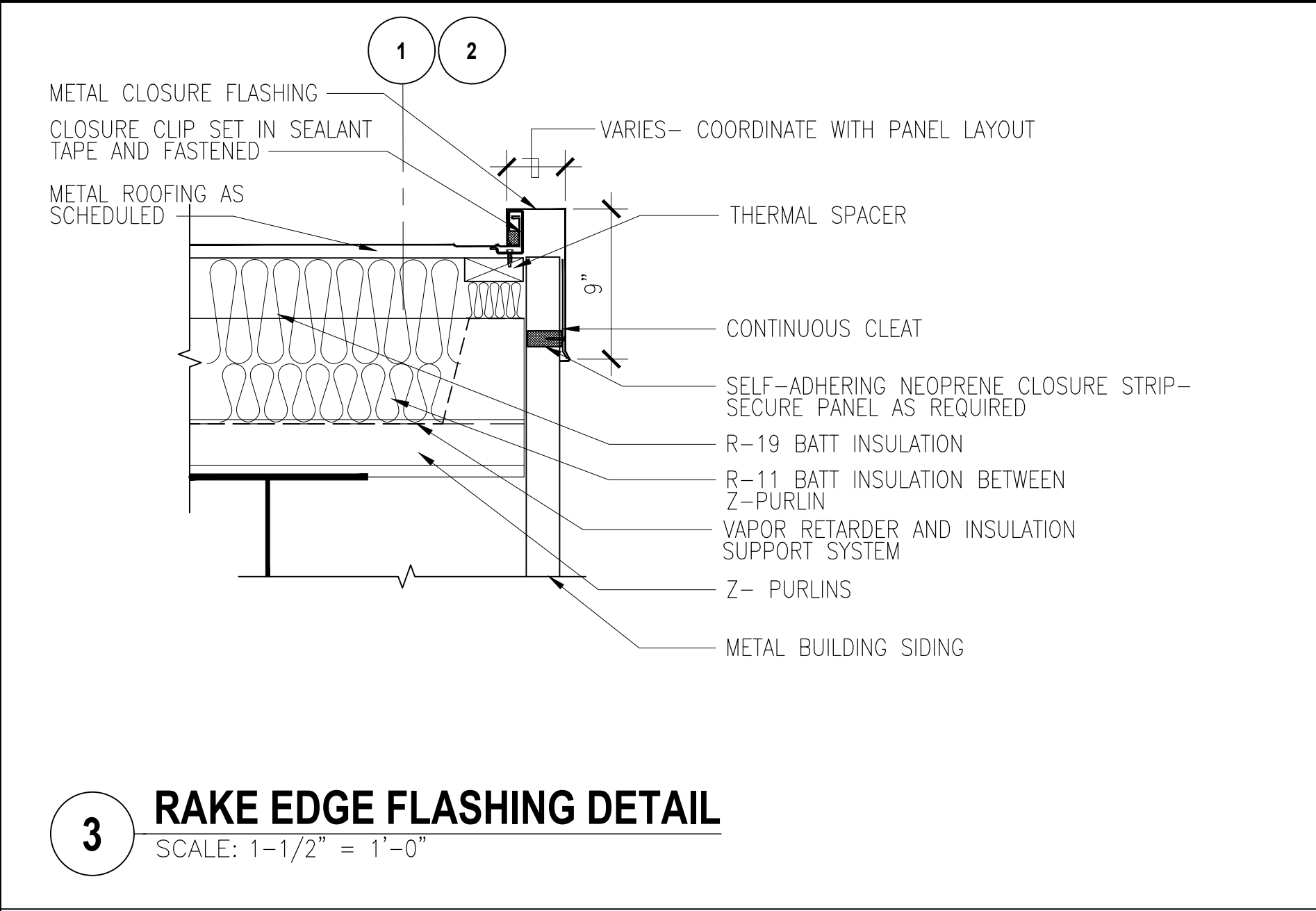
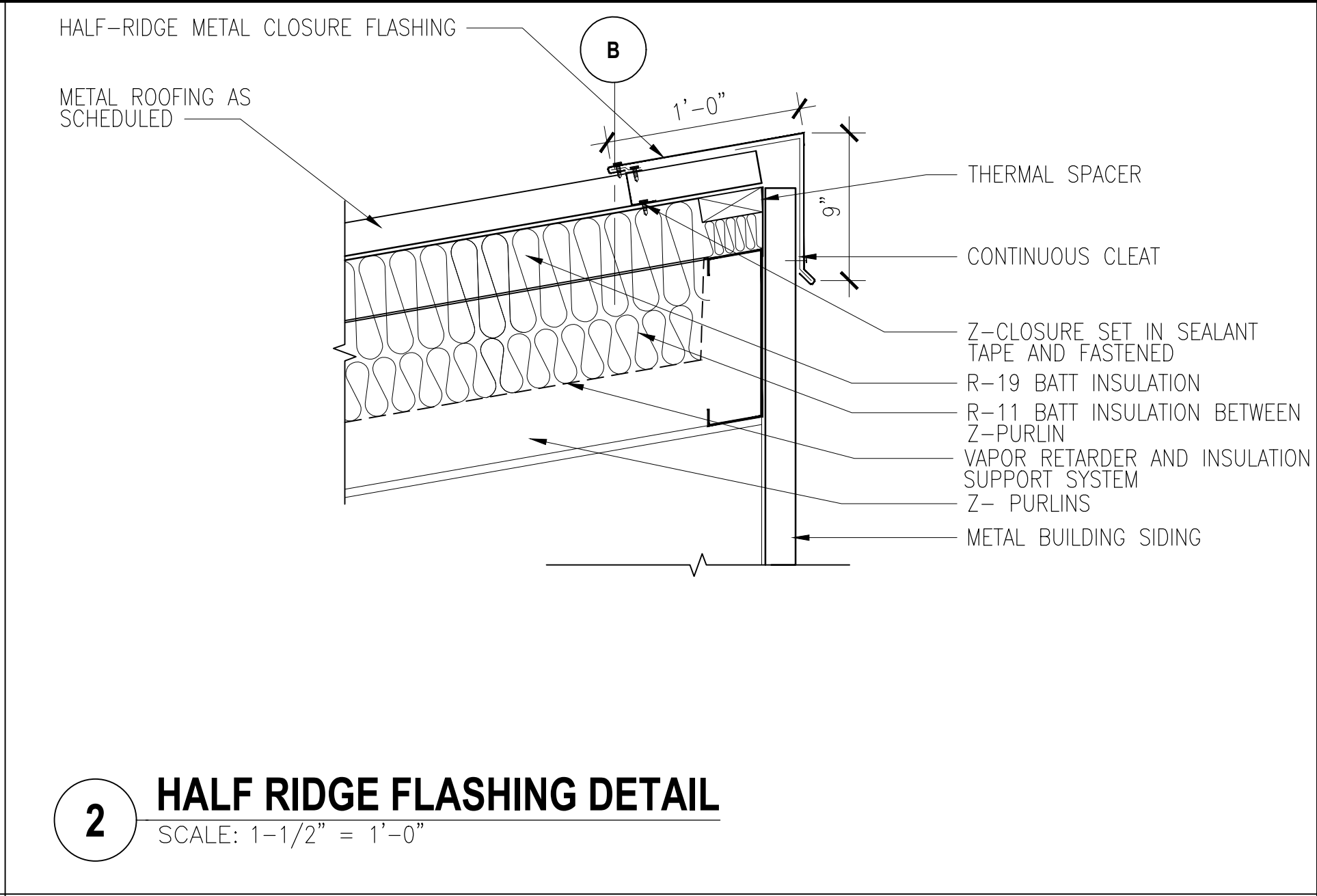
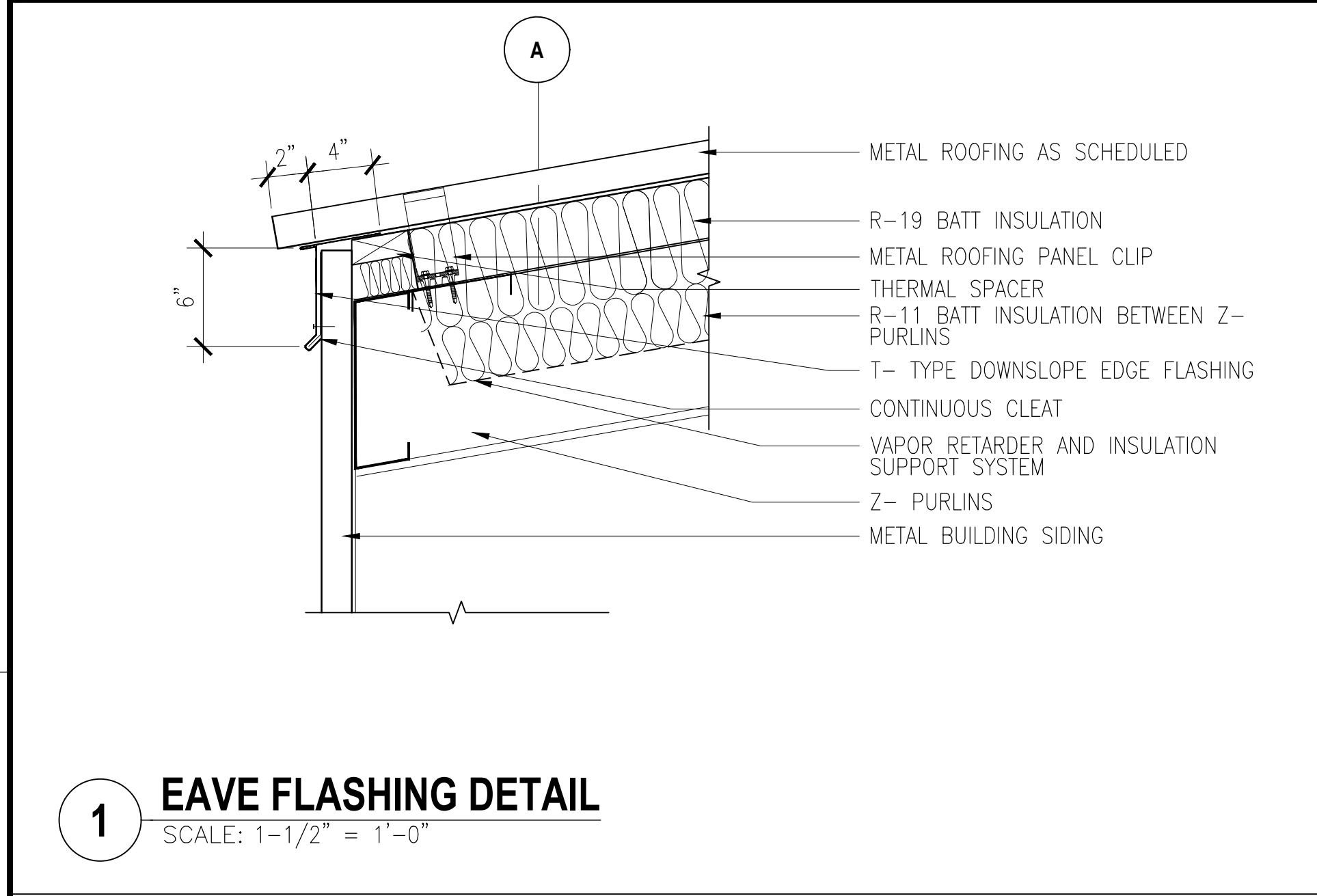
AS NOTED
JOB NO. CA-1807-C
GENERAL PROJECT NO.
012 OF 27
A111




1. SEE GENERAL NOTES FOR ADDITIONAL INFORMATION
2. CONTRACTOR TO FIELD VERIFY ALL EXISTING CONDITIONS
3. 0'-0" FINISH FLOOR ELEVATION REFERENCES ELEVATION INDICATED IN CIVIL DRAWINGS. SEE CIVIL FOR ADDITIONAL INFORMATION



FACILITY MANAGEMENT OFFICE	POHAKULOA TRAINING AREA	POHAKULOA, HAWAII
POHAKULOA TRAINING AREA HAWAII: WAREHOUSE		
SECTIONS		





BOWERS + KUBOTA CONSULTING
Project Management • Planning • Architectural/Engineering Design • Construction Management

MARK M. NAKAO
LICENSED PROFESSIONAL ARCHITECT
No. 8826
HAWAII, U.S.A.

Signature: *[Signature]* 04/30/2020
Expiration Date of the License

THIS WORK WAS PREPARED BY ME OR UNDER MY SUPERVISION

SYN	DESCRIPTION	DATE	APPR

DEPARTMENT OF DEFENSE
HAWAII ARMY NATIONAL GUARD
DESIGN AND CONSTRUCTION MANAGEMENT SERVICES
POHAKULOLOA, HAWAII

STATE OF HAWAII
FACILITY MANAGEMENT OFFICE
POHAKULOLOA TRAINING AREA
POHAKULOLOA TRAINING AREA HAWAII: WAREHOUSE

ROOF DETAILS

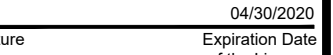
SCALE: AS NOTED

STATE JOB NO. CA-1807-C

FEDERAL PROJECT NO.

SHEET 016 OF 27

A511



WORK WAS PREPARED BY ME
R UNDER MY SUPERVISION

[illegible]

PHASE	DESCRIPTION	DATE	BY
1. INITIAL PHASE	Initial assessment and planning.		
2. ANALYSIS PHASE	Analysis of the problem and identification of causes.		
3. SOLUTION PHASE	Development and implementation of a solution.		
4. EVALUATION PHASE	Evaluation of the solution and its effectiveness.		
5. MAINTENANCE PHASE	Maintenance of the solution and monitoring for future problems.		

DOCUMENTS

TOTAL DATE		06/01/18
	DRW	CHK

POHAKULOA TRAINING AREA

POHAKULOA, HAWAII

POHAKULOA TRAINING AREA HAWAII: WAREHOUSE

EXTERIOR WALL DETAILS; INTERIOR DETAILS

FACILITY MANAGEMENT OFFICE

HAWAIIAN AIRMINT NATIONAL GUARDIAN

DESIGN AND CONSTRUCTION MANAGEMENT SERVICES

AS NOTED

JOB NO.

GENERAL PROJECT NO.	
---------------------	--

T 017 OF 27

512



SCALE: 6" = 1'-0"



SCALE: 1 1/2" = 1'-0"



SCALE: 6" = 1'-0"

METAL WALL PANELS BY PEMB MANUF.

INSIDE CLOSURE BY PEMB MANUF.

HEAD TRIM BY PEMB MANUF.

CONT. SEALANT & BACKER ROD, BOTH SIDES

METAL WALL PANEL (BEYOND)

DOOR AS SCHEDULED

C-CHANNEL GIRT

SHIM AS REQ'D

CONT. SEALANT

DOOR FRAME AS SCHED

1 HEAD DETAIL

SCALE: 3"=1'-0"

EXTERIOR

METAL WALL PANELS BY PEMB MANUF.

JAMB TRIM BY PEMB MANUF.

CONT. SEALANT & BACKER ROD

DOOR AS SCHED.

INTERIOR

INSIDE CLOSURE BY PEMB MANUF.

C-CHANNEL GRIT

JAMB ANCHORS 3 (MIN) PER JAMB

DOOR FRAME AS SCHEDULED

2 JAMB DETAIL

SCALE: 3"=1'-0"

EXTERIOR

DOOR AS SCHEDULED

ALUM. THRESHOLD, SET IN FULL BED OF SEALANT

INTERIOR

DOOR FRAME BEYOND

CONC. FLOOR SLAB

DOOR BOTTOM W/ RAIN DRIP

3 SILL DETAIL

SCALE: 3"=1'-0"

STL C-CHANNEL GIRT FRAMING SPACED AS RECOMMENDED BY DOOR MANUF. FOR DOOR HOUSING SUPPORT

METAL WALL PANELS BY PEMB MANUF.

INSIDE CLOSURE BY PEMB MANUF.

HEAD TRIM BY PEMB MANUF.

4 HEAD DETAIL

SCALE: 3"=1'-0"

METAL WALL PANELS BY PEMB MANUF.

STL GIRTS & ANGLE SUPPORTS BY PEMB MANUF.

MANUF. STANDARD DOOR JAMB TRIM BY PEMB MANUF.

STL CHANNEL JAMB BY PEMB MANUF. PAINT TO MATCH WALL PANELS

CONTINUOUS SEALANT, COLOR TO MATCH WALL PANELS

OVERHEAD COILING DOOR ASSEMBLY, TO INCLUDE COIL ASSEMBLY & HOUSING, DOOR & DOOR GUIDES, AND WIND GUARDS

5 JAMB DETAIL

SCALE: 3"=1'-0"

FINISH GRADE, SEE CIVIL

SLOPE WHERE OCCUR

WIND BAR BEYOND

OVERHEAD COILING DOOR ASSEMBLY

BULB TYPE DOOR BOTTOM

CONC FLOOR SLAB

6 SILL DETAIL

SCALE: 3"=1'-0"

STL GIRT BY PEMB MANUF.

STL GIRT BY PEMB MANUF.

C-CHANNEL GIRT BY PEMB MANUF.

HEAD TRIM BY PEMB MANUF. COLOR TO MATCH WALL PANELS

ALUM. LOUVER FRAME W/ PVC FRAME FILLER COLOR TO MATCH ROOF PANELS

ALUM LOUVERS W/ 1/4" SQ MESH, 16 GAGE ALUM BIRD SCREENS

7 LOUVER DETAIL - HEAD

SCALE: 3"=1'-0"

C-CHANNEL GIRT BY PEMB MANUF.

JAMB TRIM BY PEMB MANUFACTURER

ALUM. LOUVER FRAME W/ PVC FRAME FILLER COLOR TO MATCH ROOF PANELS

ALUM LOUVERS W/ 1/4" SQ MESH, 16 GAGE ALUM BIRD SCREENS

8 LOUVER DETAIL - JAMB

SCALE: 3"=1'-0"

ALUM LOUVERS W/ 1/4" SQ MESH, 16 GAGE ALUM BIRD SCREENS

ALUM. LOUVER FRAME W/ PVC FRAME FILLER COLOR TO MATCH ROOF PANELS

SILL TRIM BY PEMB MANUF. COLOR TO MATCH WALL PANELS

C-CHANNEL GIRT BY PEMB MANUF.

9 LOUVER DETAIL - SILL

SCALE: 3"=1'-0"



BOWERS + KUBOTA CONSULTING

Project Management • Planning • Architecture/Engineering Design • Construction Management



Signature

04/30/2020 Expiration Date of the License

THIS WORK WAS PREPARED BY ME OR UNDER MY SUPERVISION

DATE

DATE

DATE

DATE

DATE

DATE

DATE

DATE

DATE

DATE

DATE

DATE

DATE

DATE

DATE

DATE

DATE

DATE

DATE

DATE

DATE

DATE

DATE

DATE

DATE

DATE

DATE

DATE

DATE

DATE

DATE

DATE

DATE

DATE

FINISH LEGEND					
SYMBOL		MATERIAL	MANUFACTURER	PATTERN/COLOR	COMMENTS
CONC	01	SEALED CONCRETE	PRE- APPROVED MANUFACTURERS	CLEAR	
PT	01	PAINT(EXTERIOR CONC BASE)	PRE- APPROVED MANUFACTURERS	SEMI-GLOSS, COLOR: TO BE SELECTED BY HIANAG	
PT	02	PAINT(INTERIOR CONC BASE)	PRE- APPROVED MANUFACTURERS	SEMI-GLOSS, COLOR: TO BE SELECTED BY HIANAG	
PT	03	PAINT(RIGID FRAME)	PRE- APPROVED MANUFACTURERS	SEMI-GLOSS, COLOR: TO BE SELECTED BY HIANAG	
PT	04	PAINT(ALL EXPOSED METALS)	PRE- APPROVED MANUFACTURERS	SEMI-GLOSS, COLOR: TO BE SELECTED BY HIANAG	
PT	05	PAINT(DOOR FRAME)	PRE- APPROVED MANUFACTURERS	SEMI-GLOSS, COLOR: TO BE SELECTED BY HIANAG	
PT	06	PAINT(DOOR)	PRE- APPROVED MANUFACTURERS	SEMI-GLOSS, COLOR: TO BE SELECTED BY HIANAG	
MP	01	MTL PANEL	BUTLER (ROOF)	PREFINISHED, COLOR: TO BE SELECTED BY HIANAG	STANDING SEAM METAL ROOF
MP	02	MTL PANEL	BUTLER (WALL)	PREFINISHED, COLOR: TO BE SELECTED BY HIANAG	FLAT PANELS

* ALL COLORS SHALL BE SELECTED BY HIARNG.



BOWERS + KUBOTA CONSULTING
 Management • Planning • Architectural/Engineering Design • Construction Management



W. M. B.

04/30/2020
Expiration Date of the License

WORK WAS PREPARED BY ME
UNDER MY SUPERVISION

[illegible]

AL PHASE

DOCUMENTS

AL DATE	06/01/18
---------	----------

DRW	CHK
-----	-----

POHAKULOA TRAINING AREA	POHAKULOA, HAWAII
POHAKULOA TRAINING AREA HAWAII: WAREHOUSE	
FINISH & MOUNTING SCHEDULE	

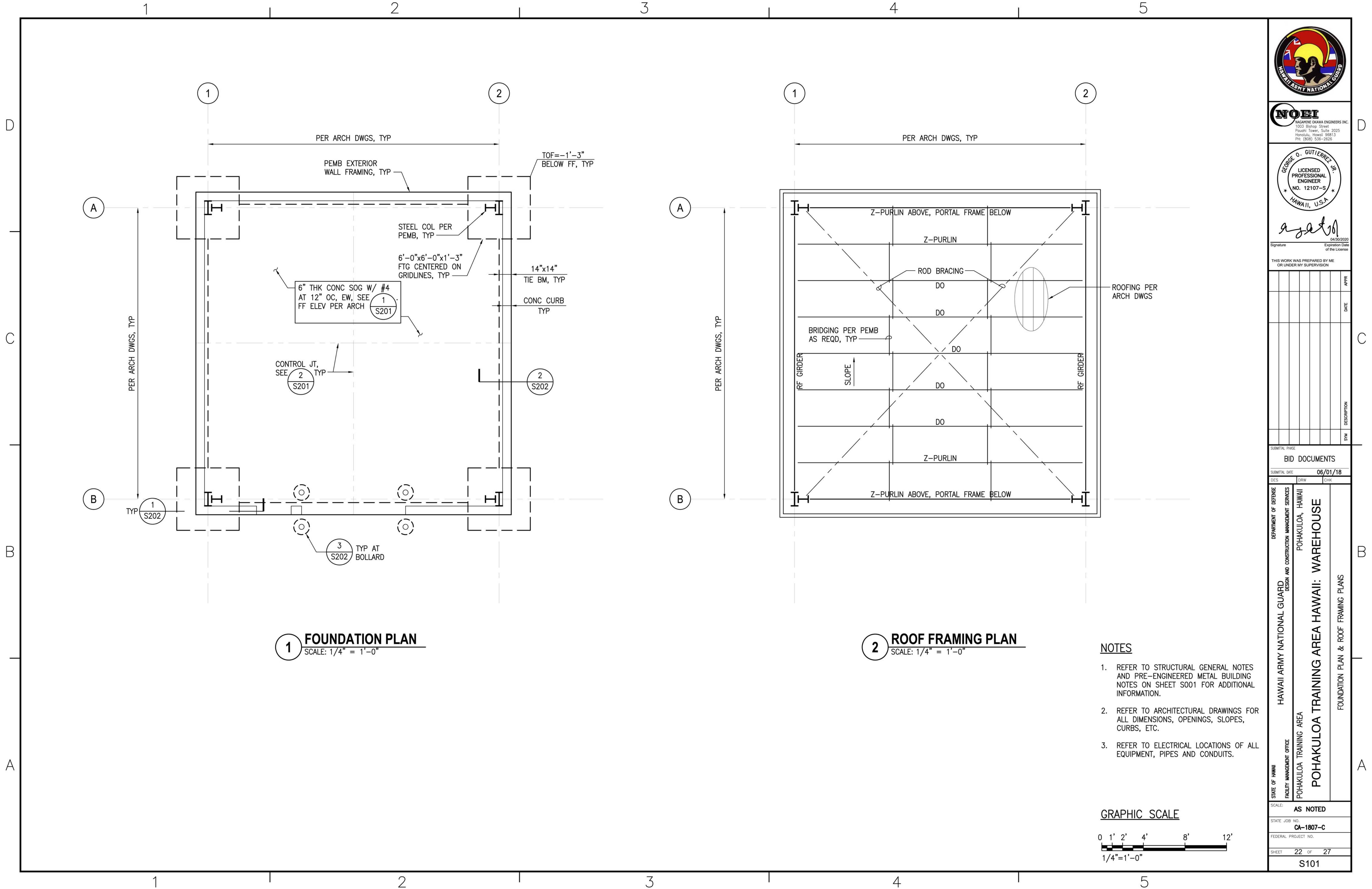
AS NOTED

JOB NO.

CA-1807-C

020 OF 27

611



NOEI
NAGAMINE OKAWA ENGINEERS INC.
1003 Bishop Street
Pouahou Tower, Suite 2025
Honolulu, Hawaii 96813
Ph: (808) 535-2525

GEORGE O. GUTIERREZ JR.
LICENSED PROFESSIONAL ENGINEER
NO. 12107-S
HAWAII, U.S.A.

Signature
Signature Date of the License

THIS WORK WAS PREPARED BY ME OR UNDER MY SUPERVISION

SYN	DESCRIPTION	DATE	APPR

BID DOCUMENTS

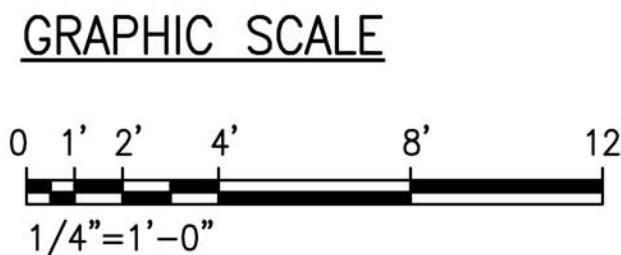
SUBMITAL DATE: 06/01/18

DES: ORW: CHK:

STATE OF HAWAII
FACILITY MANAGEMENT OFFICE
HAWAII ARMY NATIONAL GUARD
DESIGN AND CONSTRUCTION MANAGEMENT SERVICES
POHAKULOA TRAINING AREA
POHAKULOA, HAWAII
POHAKULOA TRAINING AREA HAWAII: WAREHOUSE
FOUNDATION PLAN & ROOF FRAMING PLANS

SCALE: AS NOTED
STATE JOB NO. CA-1807-C
FEDERAL PROJECT NO.
SHEET 22 OF 27
S101

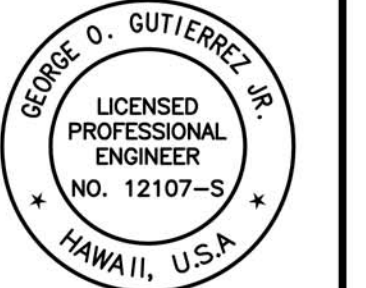
- NOTES**
- REFER TO STRUCTURAL GENERAL NOTES AND PRE-ENGINEERED METAL BUILDING NOTES ON SHEET S001 FOR ADDITIONAL INFORMATION.
 - REFER TO ARCHITECTURAL DRAWINGS FOR ALL DIMENSIONS, OPENINGS, SLOPES, CURBS, ETC.
 - REFER TO ELECTRICAL LOCATIONS OF ALL EQUIPMENT, PIPES AND CONDUITS.





○

B

[illegible]

04/30/2020

Signature _____ Expiration Date _____
of the License _____

THIS WORK WAS PREPARED BY ME
OR UNDER MY SUPERVISION

[illegible]

SUBMITTAL PHASE	
BID DOCUMENTS	
SUBMITTAL DATE	06/01/18

S	DRW	CHK
---	-----	-----

FACILITY MANAGEMENT OFFICE

HAWAII ARMY NATIONAL GUARD

DESIGN AND CONSTRUCTION MANAGEMENT SERVICES

POHAKULOA TRAINING AREA

POHAKULOA, HAWAII

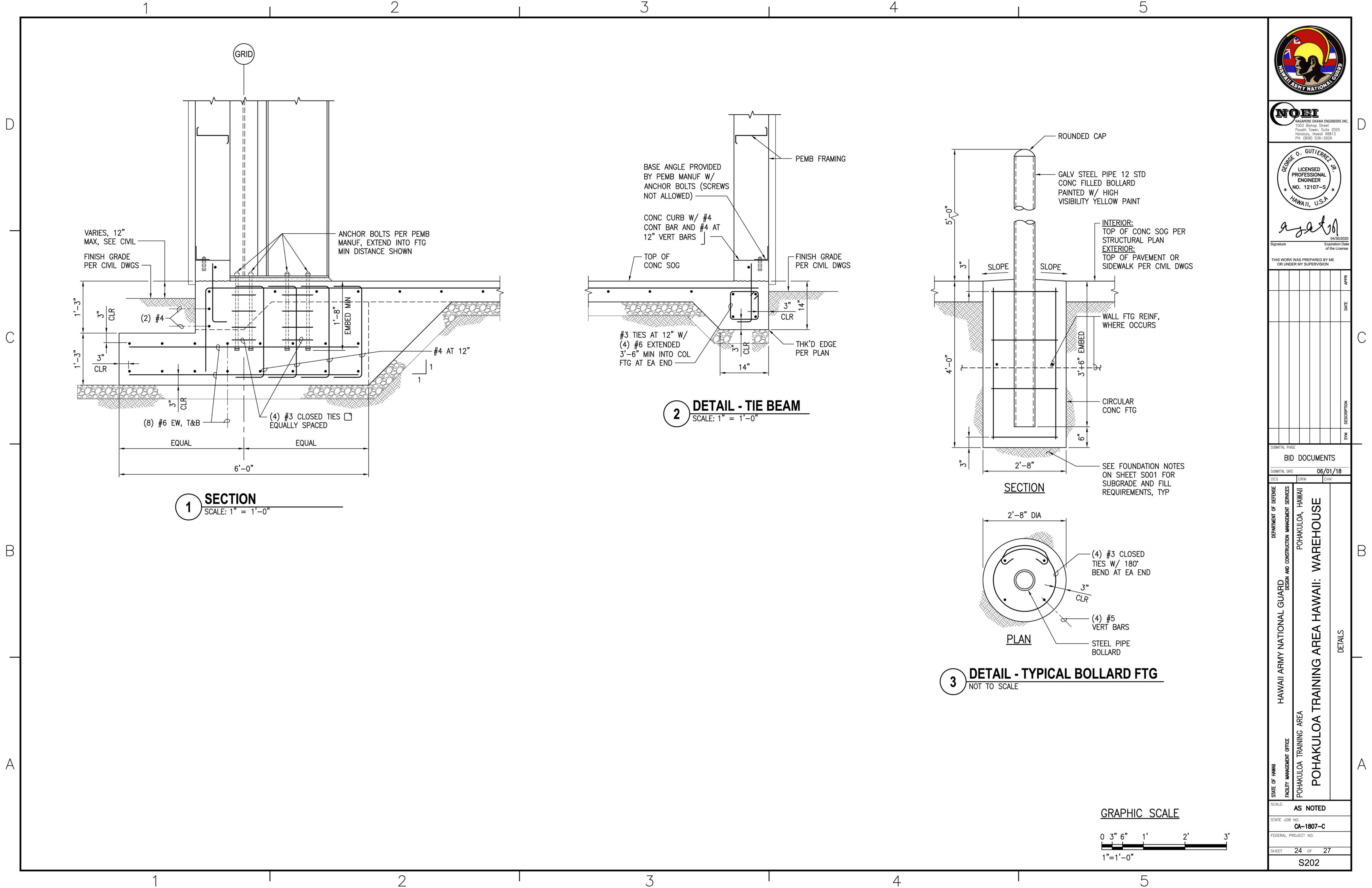
POHAKULOA TRAINING AREA HAWAII: WAREHOUSE

DETAILS

DATE:	AS NOTED
DATE JOB NO.	CA-1807-C
GENERAL PROJECT NO.	
SHEET	23 OF 28
S201	

A

A



D

C

B

A

D

C

B

A



NOEI
NAGAMINE OKAWA ENGINEERS INC.
1003 Bishop Street
Pouahou Tower, Suite 2025
Honolulu, Hawaii 96813
Ph: (808) 535-2525

GEORGE O. GUTIERREZ JR.
LICENSED PROFESSIONAL ENGINEER
NO. 12107-S
HAWAII, U.S.A.

Signature
04/30/2020
Expiration Date of the License

THIS WORK WAS PREPARED BY ME OR UNDER MY SUPERVISION

SYM	DESCRIPTION	DATE	APPR

BID DOCUMENTS

SUBMITAL DATE: 06/01/18

DES ORW CHK

STATE OF HAWAII
FACILITY MANAGEMENT OFFICE
HAWAII ARMY NATIONAL GUARD
DESIGN AND CONSTRUCTION MANAGEMENT SERVICES
POHAKULOA, HAWAII
POHAKULOA TRAINING AREA
POHAKULOA TRAINING AREA HAWAII: WAREHOUSE

SCALE: AS NOTED

STATE JOB NO. CA-1807-C

FEDERAL PROJECT NO.

SHEET 24 OF 27

S202

GRAPHIC SCALE

