

D

- C

B

A

CITY AND COUNTY OF HONOLULU
REVISED ORDINANCES OF HONOLULU 1990
CHAPTER 32

To the best of my knowledge, this project's design substantially conforms to the Building Energy Conservation Code for:

	Building Component Systems
X	Electrical Component Systems
	Mechanical Component Systems


Signature: Bruce [Signature] Date: 5-20-22

Name: BRIAN ITOZAKI

Title: ELECTRICAL ENGINEER

License No.: 9058-E

ELECTRICAL SYMBOL LIST

[illegible]

Timekeeper _____

THIS WORK WAS PREPARED BY ME OR UNDER MY SUPERVISION AND CONSTRUCTION OF THE PROJECT WILL BE UNDER MY OBSERVATION ("OBSERVATION OF CONSTRUCTION" SHALL BE DEFINED IN CHAPTER 115, HAWAII ADMINISTRATIVE RULES FOR PROFESSIONAL ENGINEERS, SURVEYORS AND LANDSCAPE ARCHITECTS) OF HAWAII, SUBCHAPTER 1, SECTION 16-1-1, DEFINITIONS, EFFECTIVE 8/23/2041.

BK BOWERS + KUBOTA CONSULTING
Project Management • Planning • Architectural/Engineering Design • Construction Management
94-405 Micks Street, Suite 201-A
Babylon, NY 11702

[illegible]

SUBMITTAL PHASE

SUBMITTAL DATE 12/3/21

DES	BI	DRW	AC	CHK	SM
-----	----	-----	----	-----	----

STATE OF HAWAII	HAWAII ARMY NATIONAL GUARD	DESIGN AND PROJECT MANAGEMENT BRANCH	DEPARTMENT OF DEFENSE
FACILITY MANAGEMENT OFFICE			
KALAELOA		OHAIU, HAWAII	
SECURITY FENCE LINE AND LIGHTING REPAIRS/ REPLACEMENT FOR MULTIPLE LOCATIONS AT KALAELOA			
GENERAL ELECTRICAL NOTES, ELECTRICAL SYMBOL LIST			

SCALE: **AS NOTED**

STATE JOB NO. _____

FEDERAL PROJECT NO.

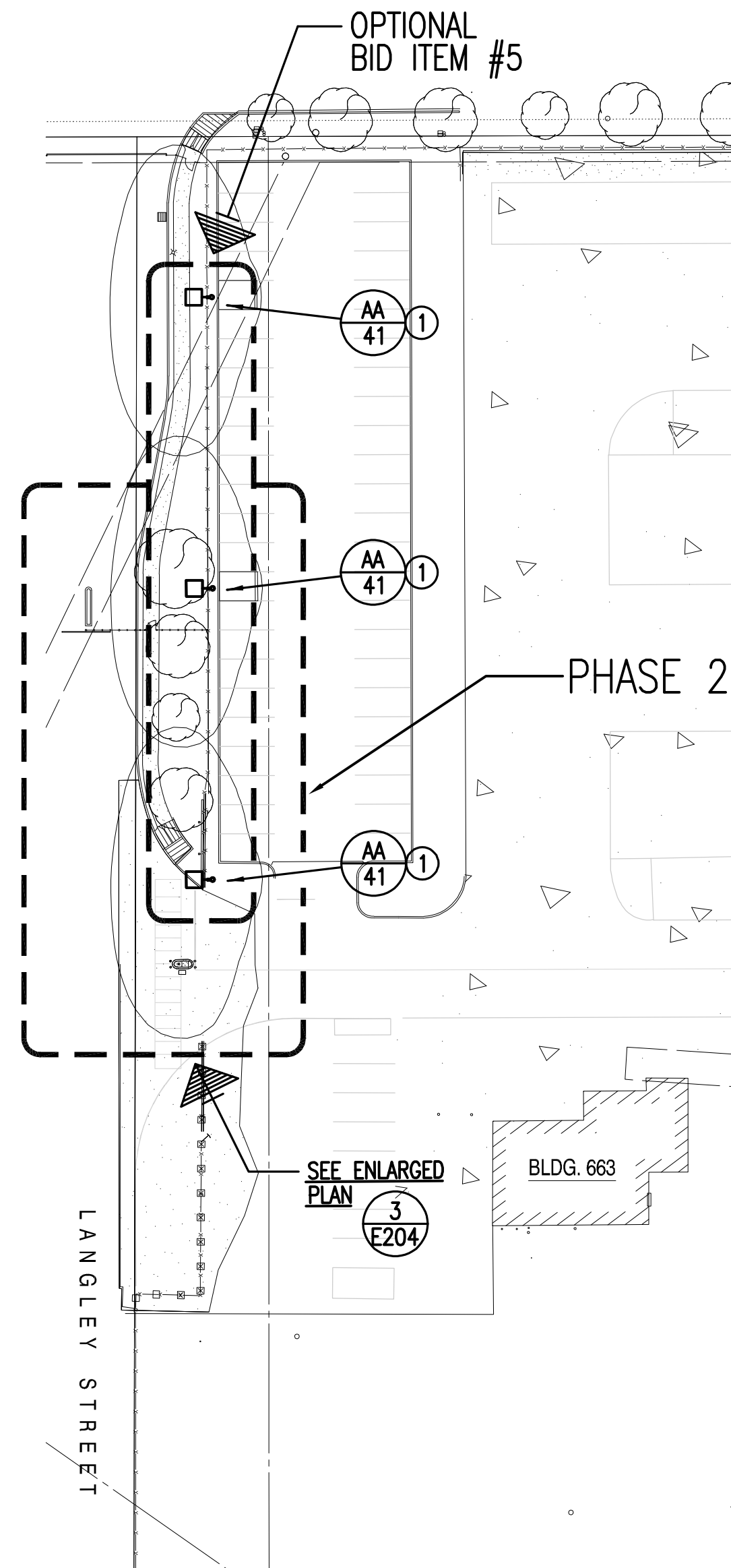
PN15180026

SHEET **20** OF **27**

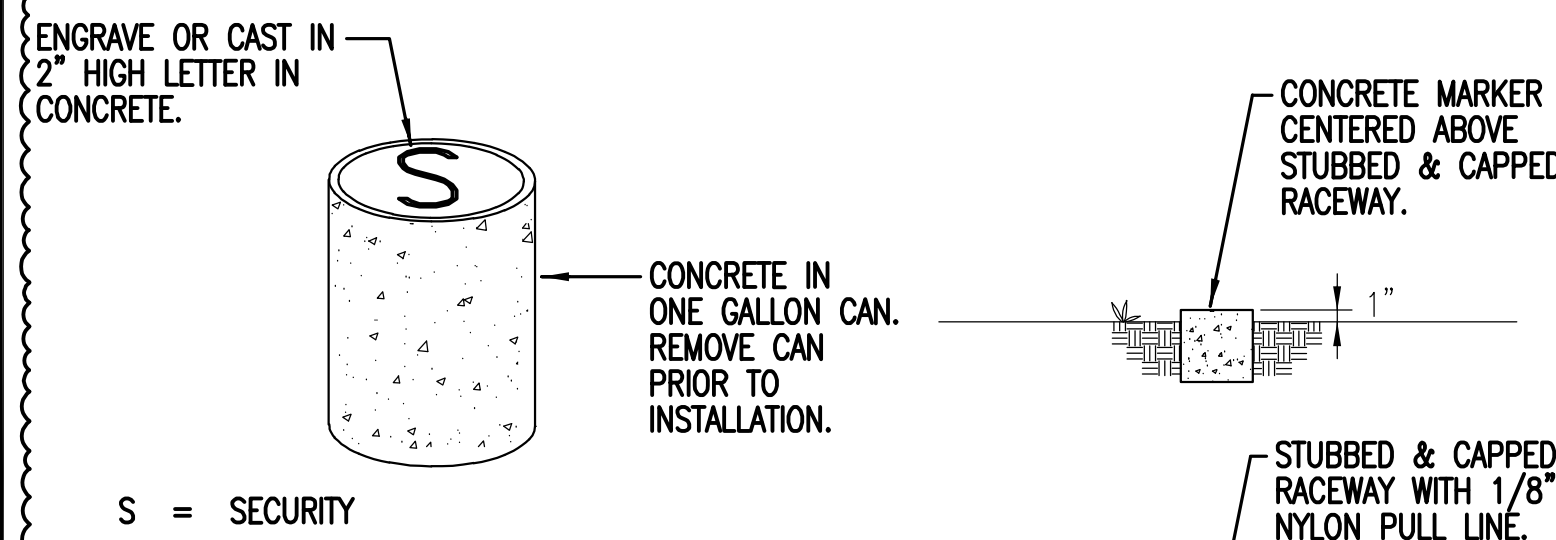
E001

ELECTRICAL NOTES: NEW WORK (THIS DETAIL ONLY)

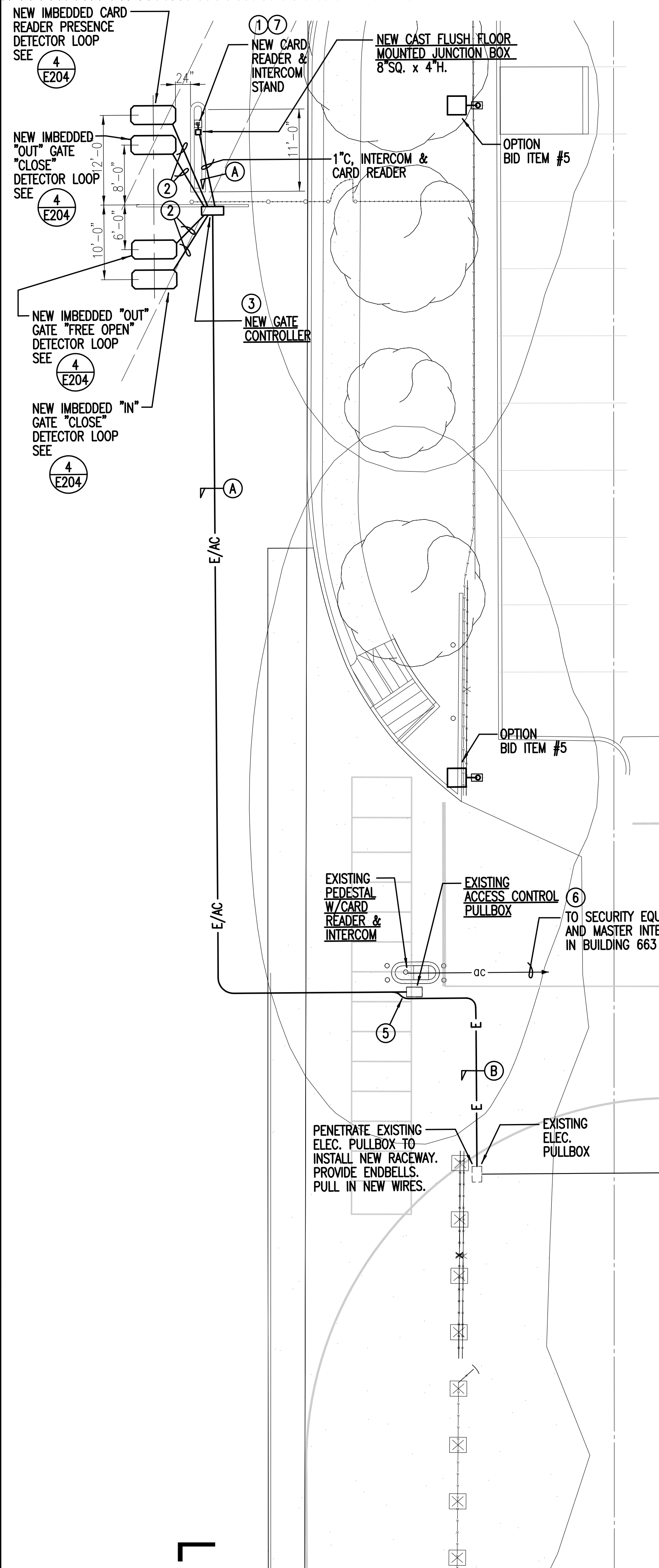
- CONTRACTOR SHALL REMOVE PORTION OF SHRUBBERY TO ACCOMMODATE NEW POLE FOUNDATION.



1 PARTIAL ELECTRICAL SITE PLAN IV
E204 SCALE: 1" = 40'



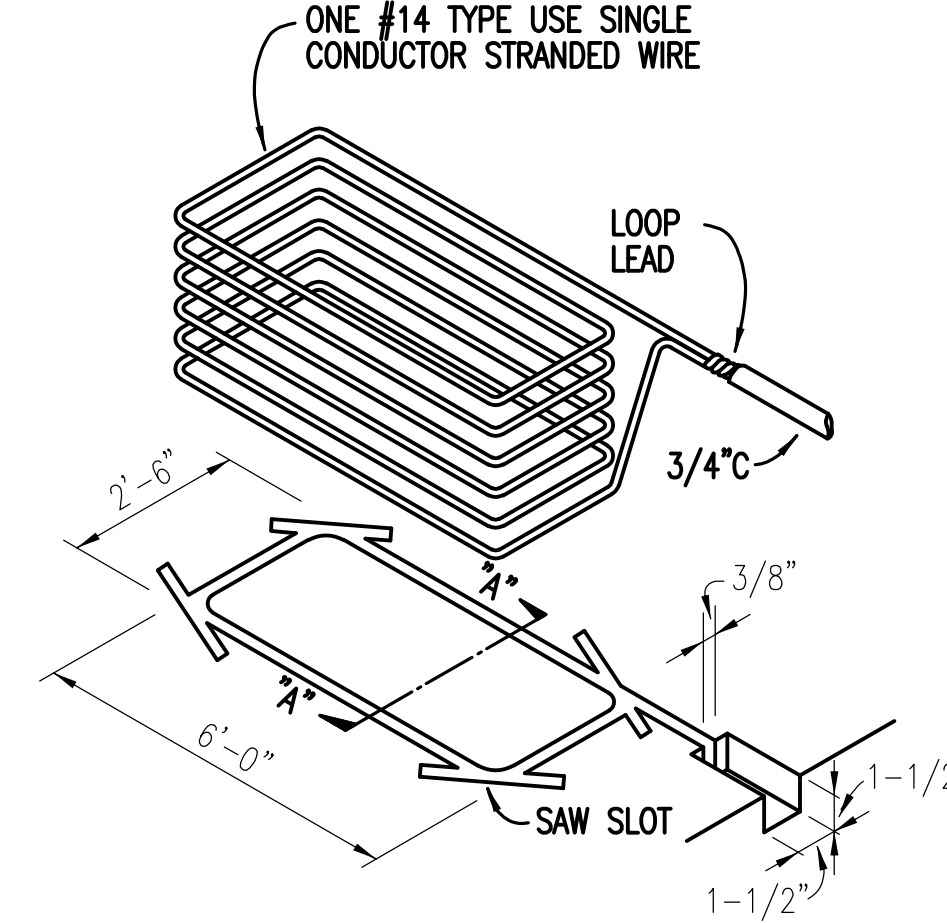
ISOMETRIC
2 DETAIL - CONCRETE MARKER
E204 NOT TO SCALE



3 PARTIAL ELECTRICAL SITE TELECOM PLAN
E204 SCALE: 1" = 10'

TYPICAL LAYOUT FOR LOOP

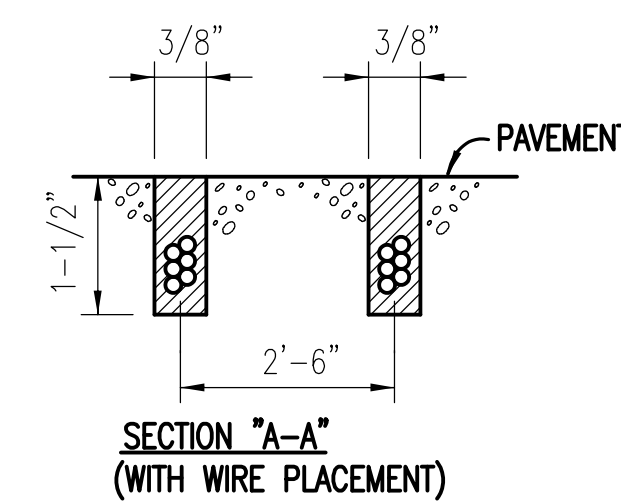
SAW CUT 3/8" WIDE x 1-1/2" DEEP. MAKE RECTANGLE SHAPE TO SPECIFIED LOOP DIMENSIONS, PLUS SLOT FOR LEAD CONDUIT. GROUT WITH NO. 202 WEATHERBAN SEALANT (A PRODUCT OF 3M CO.) OR APPR. EQUAL.



4 DETECTOR LOOP LAYOUT
E204 NOT TO SCALE

NOTES:

- LOOP LEADS ARE LIMITED TO 100 FT.
- LOOP LEADS MUST HAVE FOUR (4) TWISTS PER FOOT.
- CAUTION: CONTROL & POWER RUNS TO BE 18" MIN. FROM DETECTOR LOOPS.
- LOOP TO HAVE SIX (6) TURNS AS SHOWN.
- LOOP LEADS MUST BE IN SEPARATE CONDUIT BETWEEN LOOP AND DETECTOR, THEY MUST NOT SHARE CONDUIT WITH OTHER WIRING OR LEADS FROM OTHER LOOPS.
- DETAILS MAY BE ADJUSTED TO SUIT MANUFACTURERS REQUIREMENTS.
- CAUTION: DO NOT FRACTURE WIRE INSULATION. LOOPS SHORTED TO GROUND WILL CAUSE DETECTOR MALFUNCTION WHEN PLACING WIRE IN THE SLOT, DO NOT USE SCREWDRIVER OR OTHER SHARP TOOLS.



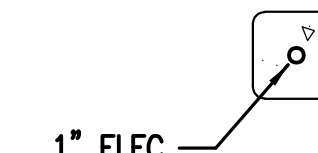
ELECTRICAL NOTES: NEW WORK (THIS DETAIL ONLY)

- PROVIDE 1" C WITH PULLWIRE BETWEEN BASE OF STAND TO FLOOR JUNCTION BOX.
- LOOP LEAD WIRING. SEE DETAIL: 3/E204.
- PROVIDE POWER CONNECTION AND CONTROLS CONNECTION TO GATE CONTROLLER.
- PULL IN NEW WIRES FOR GATE CONTROLLER PROVIDE ADDITIONAL WIRES AND CIRCUIT AS REQUIRED.
- PENETRATE EXISTING ACCESS CONTROL PULLBOX TO INSTALL NEW RACEWAY. PROVIDE ENDBELL. PULL IN NEW CABLING. VERIFY SECURITY WIRING WITH SECURITY SYSTEM CONTRACTOR.
- PULL IN NEW CABLING FOR GATE CONTROL AND INTERCOM. VERIFY CABLING REQUIREMENTS WITH BASE SECURITY SYSTEM PERSONNEL.
- CONTRACTOR SHALL PROVIDE INTERCOM STATION WITH CARD READER. MOUNT ON DUAL PEDESTAL. SEE DETAIL: 6/E302.

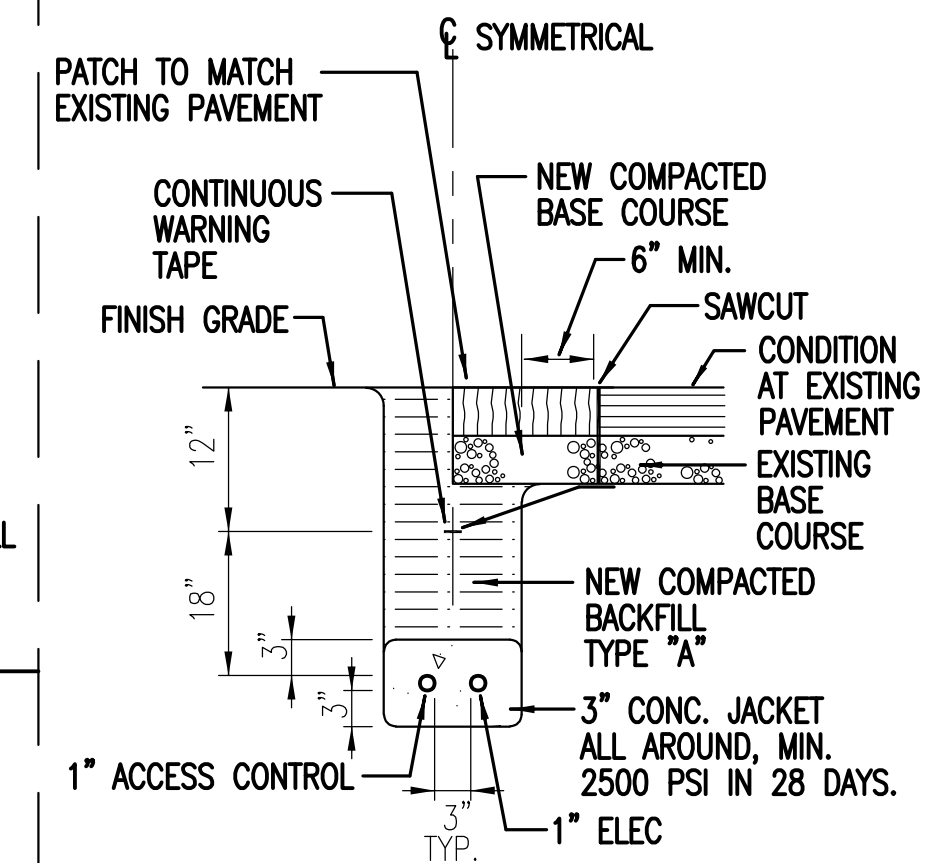
NOTES:

- BACKFILL MATERIAL TYPE "A"
BLACK OR BEACH SAND, EARTH AND GRAVEL MIXTURE. IF EARTH & GRAVEL MIXTURE, ROCK SIZE SHALL BE 1-INCH OR SMALLER AND SHALL NOT CONTAIN MORE THAN 50% ROCK PARTICLES BY VOLUME. THIS FILL SHALL BE USED OVER CONCRETE ENCASED DUCTS IN ACCORDANCE WITH DRAWINGS.
- ALL DUCTS SHALL BE PVC SCHEDULE 80.
- PROVIDE DETECTABLE DUCT WARNING TAPE 12" BELOW FINISH GRADE OR PAVEMENT DIRECTLY ABOVE DUCTS.
- TUNNEL UNDER EXISTING CONCRETE WALKWAYS TO INSTALL NEW DUCTLINE. DO NOT CUT SIDEWALKS.

SAME COVER AS DUCT SECTION (A)

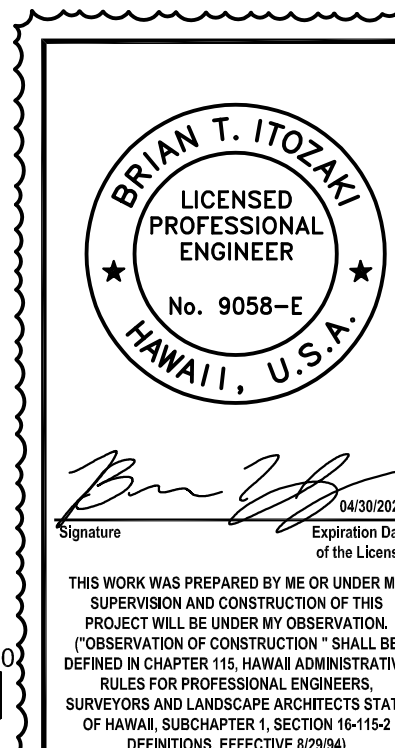
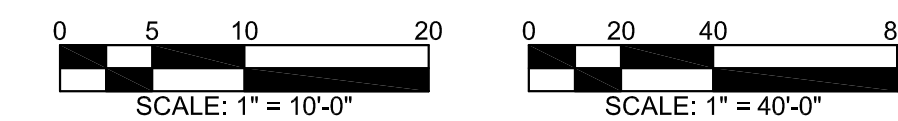
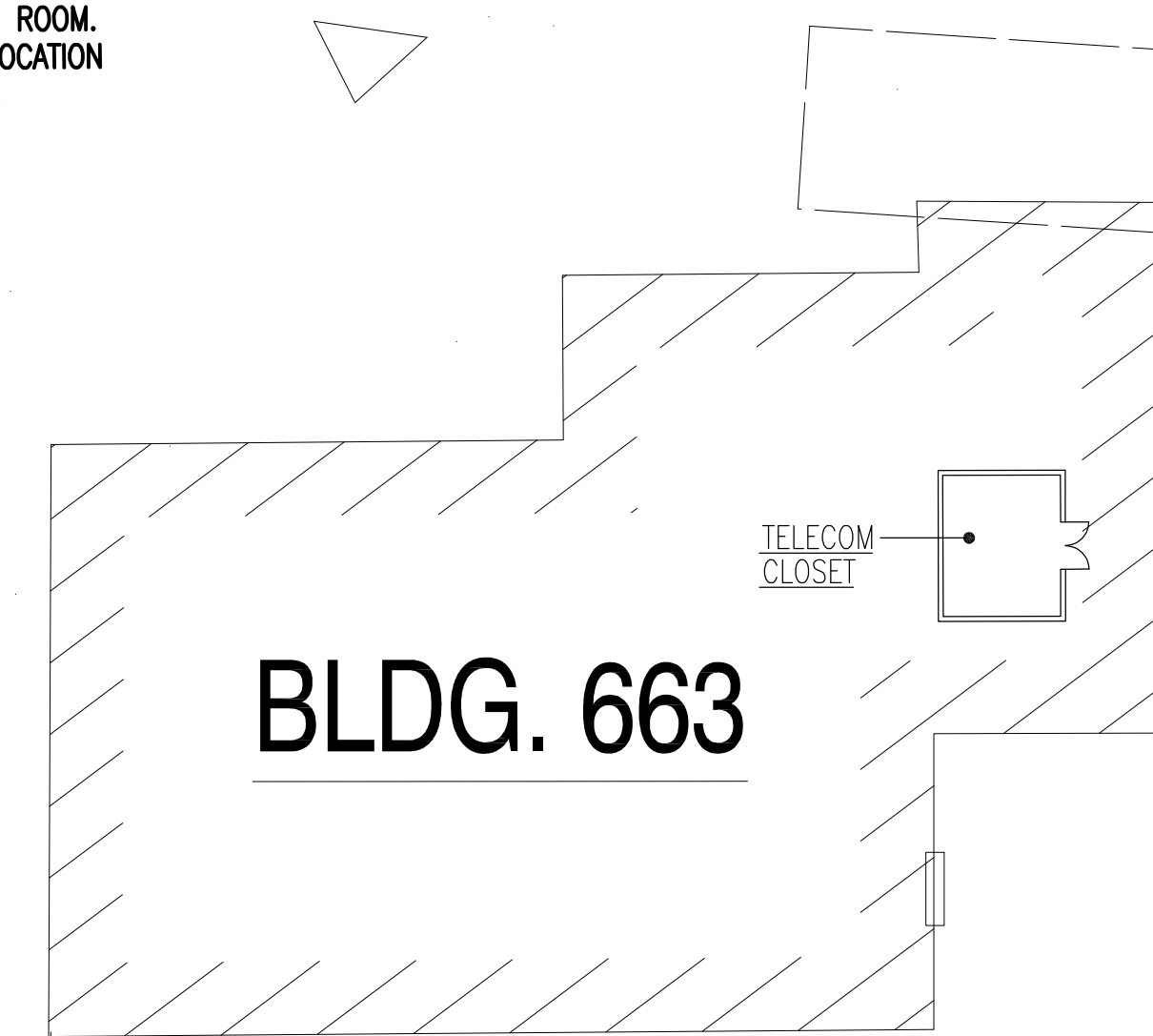


DUCT SECTION (B)



DUCT SECTION (A)

TO PANEL "ELD1" IN BLDG. 663 ELECTRIC ROOM. VERIFY LOCATION IN FIELD.



DK SCHWERS & KUBOTA CONSULTING
Project Management / Planning / Architecture/Engineering/Design / Construction Management
4000 Kalia Road, Suite 1010
Honolulu, Hawaii 96817

DATE	APPR
4/2/2022	
SYN	DESCRIPTION
ADDENDUM 1	

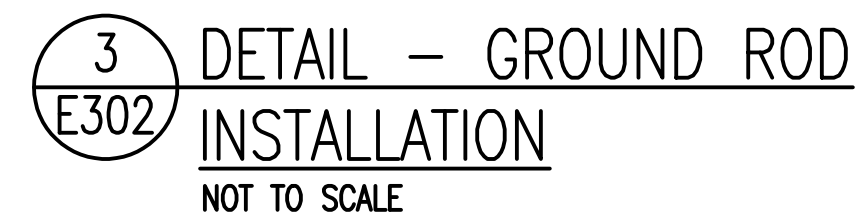
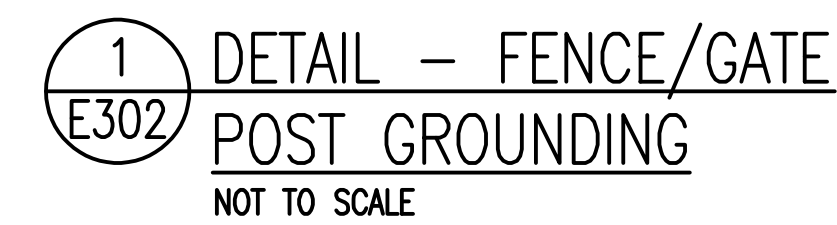
SUBMITAL PHASE

SUBMITAL DATE 12/3/21
DES BI DRW AC CHK SM

DEPARTMENT OF DEFENSE
DESIGN AND PROJECT MANAGEMENT BRANCH
OAHU, HAWAII

HAWAII ARMY NATIONAL GUARD
FACILITY MANAGEMENT OFFICE
KALAELOA
SECURITY FENCE LINE AND LIGHTING REPAIRS/
REPLACEMENT FOR MULTIPLE LOCATIONS AT KALAELOA
PARTIAL ELECTRICAL SITE PLAN IV

STATE OF HAWAII
SCALE: AS NOTED
STATE JOB NO. CA-1905-C
FEDERAL PROJECT NO. PN15180026
SHEET 25 OF 27
E204



- 4
E302
- DETAIL — GROUND TO
GATE POST CONNECTION
- NOT TO SCALE

